



MEET COCO 2016 CASPCA MASCOT

Don't believe all the hullabaloo that superstitious folks say about black cats!

Noir-furred felines in some cultures are thought to be omens of momentous happenings on the horizon, including plentiful suitors for those looking for love and safe passage home for sailors. It also is true that black cats are often overlooked in animal shelters due to their "bad luck" moniker or their reputation for having a somewhat common appearance.

Hogwash! The Craig household never has been without at least one black cat (right now there are four on their farm), and Coco has been the presiding queen since she was adopted from the CASPCA in 2006. Despite her regal status, she is not the least bit pretentious or snooty and is quite accepting and relaxed until dinnertime, when her enthusiasm

has been known to reach fever-pitch levels. Coco is unlike some of her rather finicky siblings, as she is totally unconcerned about her physical appearance, often requiring grooming assistance from others, and her parents feel that she's lucky to be sheathed all in black. Likes: DRY KIBBLE, basking beneath the hummingbird feeder (just friends, we promise!), and chasing her tail in the bidet. Dislikes: thunderstorms, a pesky brother who wants to wrestle, and parents who ration dry kibble. Black cats rule!





MISSION

Advance the compassionate treatment of animals by providing sheltering, medical care, and behavioral services for dogs and cats; promoting permanent, caring homes; and furthering education and outreach

VISION

Healthy animals in caring homes

TABLE OF CONTENTS

1 WELCOME

2 BOARD & LEADERSHIP

5 ABOUT US

7 SERVICES & OUTREACH

10 RESULTS & STATS

13 YOUTH

14 COMMUNITY

15 VOLUNTEERS & FOSTERS

19 MEET OUR STAFF

20 COST OF CARE

23 SAVE STORIES

25 EVENTS

29 FAQs

30 FISCAL

31 PHILANTHROPY

32 ACKNOWLEDGMENTS

35 THANK YOU

WELCOME



Anyone with a pet has long thought of their animal companion as a member of the family. Animal family members give us so much, and they ask for so little in return. Our pets are family we get to choose, who are delighted that we chose them.

The CASPCA is in the business of making and reuniting families. Over 31,000 animals in our care have helped grow and complete Charlottesville-area families since we became a No Kill community in 2006. During that time, we have spayed and neutered over 56,000 animals and reunited over 6,300 lost pets with their forever families. Since we began microchipping in 2013, we have microchipped more than 9,400 animals. And that's not all. In 2016, we were proud to celebrate 10 years as a No Kill community. Recently, we took our mission on the road with our new Compassionate Care-A-Van, a mobile

animal care and adoption unit that can transport animals to our shelter for spay/neuter surgeries, bring basic care to pets in underserved parts of our community, and introduce furry potential family members to every corner of our community.

Every day at the CASPCA we see how the abandoned, neglected, and homeless animals need us— but just as clearly, how we need them. Knowing the joy that they bring to the lives of those who will someday care for them makes every day a great day. As a leading No Kill community, keeping many cats and dogs housed, healthy, and fed until they find a loving family is an expensive undertaking. It requires tens of thousands of hours of work from dedicated staff and animal care volunteers. Thanks to the many generous contributions from supporters like you, the CASPCA has been able to thrive and expand its lifesaving and smile-bringing mission of creating and completing families. Without you, none of this would be possible.

In this report, we are excited to share our numbers, which reflect what a difference we made for the animals in our care in 2016.

A handwritten signature in black ink that reads "Suzanne Owen". The signature is written in a cursive, flowing style.

Suzanne Owen
Board Chair

BOARD OF DIRECTORS

Suzanne Owen

CHAIR

Mark Sackson

VICE CHAIR

Lisa Ross Moorefield

SECRETARY

Kevin Stiffler

TREASURER

Gina Bayes

Jenn Corbey

Rebecca Tarkington Craig

Erin Davis, DVM

Ethel deNeveu

Tom Fitch

Ashley Matthews

Phil Shiflett

Frank Squillace

STAFF LEADERSHIP

Angie Gunter

EXECUTIVE DIRECTOR

Nicolette Del Muro

DIRECTOR OF OPERATIONS

Kristen Scheller, DVM

DIRECTOR OF VETERINARY
SERVICES

— “ —

It didn't take long for Cyd and Maddie to walk into Charlie's life.

— ” —





meet charlie & cyd



Charlie and his human mom, Cyd, found each other at the perfect time.

Cyd's dog at the time, Maddie, had just been diagnosed with cancer and they both needed new life in the home. When his owner had to move, Charlie was surrendered to the shelter along with five other dogs. It is hard on animals when they lose their owners, and Charlie had an especially difficult time. He did not know how to walk on a leash, and always hesitated to leave his kennel. The CASPCA staff brought Charlie up to an administrative office with the hope that some extra TLC and a quiet space would make him more comfortable. It didn't take long for Cyd and Maddie to walk into Charlie's life.

Today, Charlie is a healthy and happy 15-pound bundle of love, and enjoys anything that involves being with his family. "I don't know what I would do if Charlie wasn't in my life," says Cyd, who enjoys their walks together and appreciates having a reason to enjoy the outdoors with her buddy. Charlie can put a smile on anyone's face with his playful antics, which include tossing around cat toys, moving his doggie bed from room to room, and romping around with his human mom and canine siblings.

ABOUT US



Founded in 1955, (after unofficially operating out of the basements and garages of concerned citizens since the early 1900s), the Charlottesville-Albemarle SPCA has come a long way. In 1955, the CASPCA acquired eight acres of land with a chicken coop, which, with some conversion and remodeling, became the first animal shelter in the region. Over the next 40 years, the shelter building, never completely renovated, became a hazard. In the late 1990s, it no longer met state building code requirements and was on the verge of being shut down.

Planning for a new facility began in 2000. In 2004, after a community-wide capital

IN THE PAST DECADE

More than **31,000** animals adopted into loving homes.

More than **56,000** animals spayed/neutered to reduce overpopulation.

Over **6,300** lost pets reunited with their families.

Over **9,400** animals microchipped.

campaign, the CASPCA moved into its current facility. The current home is a 32,000-square-foot building on a six-acre campus, which houses one-third more animals than the former facility, and contains a veterinary surgical suite.

In 2006, less than two years after the move into the new facility, under the leadership of then-executive director Susanne Kogut, the CASPCA became a designated No Kill community, securing its status as a trailblazer in the animal-welfare community. The impressive designation was achieved by doubling the number of animals placed in foster care from the previous year, treating and finding homes for many sick and injured



dogs and cats as well as older, blind, or deaf animals or those with “special needs.”

The CASPCA proudly celebrated 10 years of being a No Kill community in 2016. Looking into the future, we knew it was time to expand our lifesaving efforts to pets living outside of the shelter’s

walls. Our vision for a mobile unit became a reality thanks to a \$73,500 challenge grant from the Perry Foundation and our generous community of supporters.

The Compassionate Care-A-Van will enable the CASPCA to continue leading the way into the future of animal welfare. The state-of-the-art mobile unit allows us to save more pets’ lives, in and outside of our service area, through many facets such as providing accessible and affordable veterinary care to low-income pet owners; helping surrounding communities increase their live release rates by transferring in animals in danger of euthanasia; and showcasing adoptable shelter pets. The ability to transport and present adoptable pets in the Compassionate Care-A-Van will spread awareness of the many shelter services and programs at the CASPCA, in addition to reaching adopters who may not have otherwise visited the shelter.

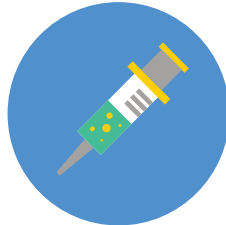
With the new Compassionate Care-A-Van, the CASPCA can visit the underserved areas of our region where pet owners have difficulty accessing and affording veterinary care, and provide wellness checkups, vaccinations, and pet care education. We will also provide animal transport to and from our clinic for spay/neuter surgeries, wound care, mass removals, grooming to remove mats, and dental procedures.

SERVICES



SPAY/NEUTER

Spaying and neutering your pets helps prevent additional unwanted litters in our community. Schedule your animal today.



RABIES VACCINATIONS

Prevent your pet from contracting this fatal disease. Clinics are held on the first Sunday of every month from 12-4PM.



SURRENDER YOUR PET

Before surrendering your pet, explore every other alternative first. Pets are a lifetime commitment.



LOST/FOUND

Reclaim a lost pet if it has strayed and found its way to us. Please call us as soon as you realize your pet is missing and file a lost animal report.



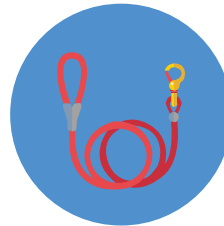
SUMMER CAMPS

Camps consist of animal-related activities, animal interactions, visits from special guests, fun animal-themed crafts, and more.



THERAPY TEAMS

Therapy teams brighten days at care facilities, nursing homes, and children's programs.



OBEDIENCE TRAINING

Using clicker training, our group classes teach skills to dogs and their people for real-life situations. Register online.



COMMUNITY CATS

We offer free spay/neuter services for community (feral) cats living in Albemarle County and the city of Charlottesville.

& OUTREACH



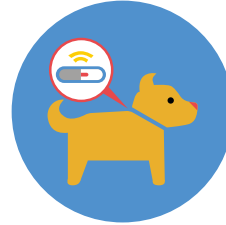
COMPASSIONATE CARE CLINICS

Clinics provide a wellness exam, pet-care education, rabies vaccines, and routine wellness care at reduced fees.



CITY/COUNTY LICENSES

We sell county and city dog licenses. Proof of a current rabies vaccination is all you need to bring with you.



MICROCHIP CLINICS

Reuniting lost pets with their owners is an important part of our mission. Clinics are held on the first Sunday of every month from 12-4PM.



CREMATION SERVICES

With compassionate hearts, the staff at the CASPCA will take your deceased companion and treat your pet with the utmost respect.



HUMANE EDUCATION

We teach principles of respect for all forms of life, and believe encouraging the spirit of kindness toward animals is the starting point for empathy in kids.



BIRTHDAY PARTIES

Let us make your birthday bash memorable with a shelter tour, fun games, and real "party animals."





2016 RESULTS & STATS

218,126

PET MEALS
SERVED

2,511

TIMES ANIMALS
ENTERED FOSTER CARE

121

ANIMALS SERVED DURING
COMPASSIONATE CARE CLINICS

140,000

WEBSITE
VISITORS

2,444

ANIMALS FOUND
LOVING HOMES

115

LIFESAVING SURGICAL
PROCEDURES

19,994

EMAIL
SUBSCRIBERS

1,488

CATS
ADOPTED

68

SMALL ANIMALS
ADOPTED

18,818

FACEBOOK
LIKES

888

DOGS
ADOPTED

4,510

PETS WERE SPAYED/
NEUTERED

688

NUMBER OF
FOSTER PARENTS

3,342

GENEROUS
DONORS

540

LOST PETS
WERE REUNITED

2,728

PETS WERE
MICROCHIPPED

310

PET THERAPY
VISITS





meet coven & james



Coven's owner, James, met her at the CASPCA when she was just a little kitten.

James was looking for a Siamese kitten to join his family and was stunned when he arrived for work at the CASPCA one day and there she was, waiting for him in a purple carrier. There was an immediate connection between the two, and James knew the small little kitten who fit perfectly in his hand was meant to be his. He immediately proclaimed that he wanted to adopt her and sent a picture of her to his family, stating, "I am bringing her home today!" James checked on her periodically throughout the day, falling more in love with her as the day progressed.

With the recent loss of his sister, James was left feeling vulnerable. Coven was just what he needed to help overcome his feelings of grief and sadness. Coven provided a healthy distraction, and brought a calming presence to the home that she shares with her siblings: a Quaker parrot named Champagne and a Biewer Yorkie named Porsche. James says, "Coven is a blessing in our lives; a true Godsend—she is kismet!" Today, Coven enjoys chasing Porsche around the house and watching the world go by while sitting on the windowsill. A great cuddle buddy, she brings James and his family joy every day.





— “ —

Coven was just what he needed to help overcome his feelings of grief and sadness.

— ” —

We believe that encouraging the spirit of kindness toward animals can be the starting point for the development of empathy in youngsters. The CASPCA engages the next generation of animal lovers with our popular humane education programs, including camps, birthday parties, and educational tours and visits.

SUMMER, SPRING & WINTER CAMPS

In 2016, the CASPCA offered spring, summer, and winter camps for rising third through sixth-graders. During these week-long sessions, camp counselors and guest speakers taught students about the importance of treating animals with respect and compassion by engaging in crafts, educational activities, and interactions with shelter pets.

ART CAMP

This camp for at-risk youth helped campers learn empathy and compassion for animals, while giving them experience in team-building exercises and collaborative projects. Campers learned about animal welfare and created art for display at the CASPCA. This camp was made possible with support from the Bama Works Fund of Dave Matthews Band as well as other generous donors, allowing us to provide campers with free meals, transportation, and all the supplies needed to create a Virginia is for Animal Lovers mural.



41

**EDUCATIONAL VISITS &
TOURS HELD**

650

**CHILDREN ATTENDED
BIRTHDAY PARTIES**

96

**CHILDREN PARTICIPATED IN
A CASPCA CAMP**

COMMUNITY



The first Rummage sale to benefit the CASPCA animals took place in 1940 and raised \$40. For more than six decades, the six-week-long annual sales continued to grow in popularity, raising more and more funds needed for the lifesaving care of the CASPCA animals. The 2005 sale brought in more than \$200,000, and in 2007, a coalition of board members and staff opened the first brick-and-mortar SPCA Rummage Store on Preston Avenue. The 2016 move to the larger commercial space at 199 Zan Road in Seminole Shopping Center has allowed staff to accept more items and offers an expanded area for the sorting and organizing of donations. The new store offers ample space for the

popular Boutique and an improved book section. A larger shoe area allows footwear to be organized by size, and shoppers can enjoy the ease of finding plenty of parking spaces in the shopping center lot.

A new sales system was implemented, which allows items to be reduced on a monthly basis to ensure old items are moved, making room for new merchandise. In addition to shopping for treasures old and new, shoppers can visit adoptable felines in the bright and spacious Cat Room on-site!



Shop & Donate

Monday - Saturday: 10AM-6PM

Sunday 12PM-5PM

VOLUNTEERS



Here are just a few of the dedicated volunteers who are an integral part of the CASPCA family, assisting with everything from cleaning, socializing cats, and dog walking to greeting visitors, fundraising, and assisting at adoption events. Hundreds of animals receive a second chance, thanks to the love and compassion of our many foster families. Fosters offer animals nurturing and feeding when very young, socialization, a break from the shelter, training, and time to recover and heal after surgery.

& FOSTERS



20,942
VOLUNTEER
SERVICE HOURS

=

10
FULL-TIME
STAFF MEMBERS

— “ —

I hadn't been the only one fostering! These kittens fostered me too.

— ” —





meet matilda & kelley



Two years ago on Christmas Eve, Kelley's children surprised her with an adopted cat from our shelter.

Having just moved to the area, the family felt unsettled and Matilda quickly became the best part of their new home. Soon after settling in, Matilda snuck out of the house. Soon after settling in, though, Matilda snuck out of the house. Kelley was devastated and came to the CASPCA. She met with the front desk staff, who worked with her and helped her locate Matilda.

While at the shelter, Kelley learned of the foster program, and soon took home her first litter of bottle babies. These kittens required around-the-clock care, and bottle feeding every few hours. As a first-time foster mom, Kelley worked closely with the clinic staff to help understand the kittens' progress. She soon received another call from the foster team, asking for help with another litter of neonatal kittens.

Frank E. and Cardsy, the best of friends, are now residents with Matilda and Precious Pearl, the pup. Kelley can't imagine her life without the kittens, "I hadn't been the only one fostering! These kittens fostered me too. In those many months, I was reminded of how much I still have to offer, that my desire to nurture and love still has a place and value in this world, and 'doing small things with great love' should never, ever be underestimated."

MEET OUR STAFF



The CASPCA's talented and diverse group of over 60 employees all share the same passion, dedication, and commitment to helping the thousands of animals who walk through our doors each year. With over 20 different positions, each staff member works tirelessly as part of a team, all with the shared goal of improving the lives of animals.

Jobs range from caring for each animal's needs and finding them loving homes to working at the shelter's thrift store to organizing fundraisers that support the many lifesaving programs at the CASPCA.

Each person plays such an important role in serving our community's pets and organization's mission.

Working with animals is a dream job, but animal welfare is also a very challenging and emotional industry. Staff work long days; the work is hard and dirty; tears of joy and sadness are shed; but performing lifesaving work is one of the most rewarding aspects. Helping animals' wounds heal, both physically and emotionally, and seeing them run into the arms of their new adopters make us want to work that much harder.

COST OF CARE

COST OF
SPAY/NEUTER:

CATS \$50/DOGS \$65

DAILY COST OF CARE
FOR ONE HEALTHY
ANIMAL:

\$20

COST OF VET CARE
PER ANIMAL ON
ADMISSION:

\$40





meet lorena & sarah



When Lorena's family came to the CASPCA, they knew immediately that she was the one.

Lorena wasn't always up for socializing during her long stay at the shelter. As a diabetic cat, her daily insulin shots are a lifesaving necessity; however, they are not easy to administer. Shelter staff knew that someone with patience and experience in medicating felines would be what Lorena needed. After living at the CASPCA for more than a year, Lorena met the Critzer family. Lorena greeted them with lots of kitty licks and didn't shy away from receiving pets and scratches.

As the family's first pet, Lorena helps her human siblings learn the important lesson of what it means to be responsible caretakers. Lorena enjoys greeting her people when they get home by rolling onto her back and showing how comfortable she is in her new home. She keeps her human mom company when the kids are away and is always within arm's reach. Her mom relayed recently, "Lorena has brought love, laughter, and for me, peace. We all just adore her and couldn't be happier!"



— “ —

Lorena helps her human siblings learn the important lesson of what it means to be responsible caretakers.

— ” —

SAVE STORIES

COST:
\$1,000



SPARKLE

CONDITION: Sparkle was transferred to the CASPCA from another local shelter, unable to treat her severe upper respiratory infection. The CASPCA is fortunate enough to have two veterinarians and a clinic on-site that always tries to aid other local shelters without the same resources. **TREATMENT:** Sparkle was started on treatment for an upper respiratory infection and moved to the CASPCA's low-stress URI ward. She improved a little, but continued to have thick nasal discharge. During a follow-up exam, a hole was discovered in her soft palate, which allowed food from her mouth to come in contact with her nasal cavity, creating a constant infection in her nose. She was placed under general anesthesia and the defect was repaired, greatly increasing her quality of life. **TODAY:** Sparkle is recovering from her recent surgery and will be available for adoption soon!

COST:
\$5,820



VINNIE

CONDITION: Vinnie was carried into the CASPCA by one of the local animal control officers, extremely dirty, full of fleas, and unable to walk. Our vet examined him, and x-rays revealed severe bruising on his abdomen, crepitus (air in an abnormal location) affecting his chest, a fractured right tibia, a fractured pelvis, a dislocation of his pelvis, and multiple fractured ribs. **TREATMENT:** Vinnie was sedated, bathed, bandaged, and put on strong pain medication. His fractured right rear limb was repaired with a bone plate. While recovering in foster care, he began to cough. X-rays revealed a diaphragmatic hernia—a hole in his diaphragm that allowed abdominal organs to enter the chest. The surgery was challenging, but he did very well and the day after surgery was wagging his tail! **TODAY:** Vinnie is happy and healthy in his new home with his beagle/chow mix brothers. They act as guides and protectors for him, often snuggling together.

COST:
\$4,635



MYRTLE

CONDITION: Myrtle came to the CASPCA anemic and severely matted after being abandoned in a foreclosed home. She was an older cat suffering from an upper respiratory infection, arthritis, and severe inflammation and infection in her mouth and ears. **TREATMENT:** Myrtle immediately started treatment and blood work was performed to ensure her liver and kidneys were functioning well. Her coat was sheared and she was put under general anesthesia for dental surgery. Afterwards, she was put into a foster home for recovery. **TODAY:** After a few months, Myrtle found a loving home and her adopter reported that she is doing great and is the sweetest girl. She relayed, "It's like she has lived with us since she was born. It makes us feel so happy that she is comfortable and loves it here just like we love having her here!"

COST:
\$4,750



JETHRO

CONDITION: Jethro arrived at the CASPCA unable to walk. He had severe injuries in both of his hind legs and his rear paws were badly damaged and infected. His right ankle joint was obliterated and his left hip joint was dislocated. Jethro was also morbidly obese.

TREATMENT: Jethro was taken to surgery to fix his left hip and both of his wounds were cleaned and bandaged. He required daily bandage changes under sedation. His left leg began to heal, but the injury to his ankle was so severe, amputation was considered. But a unique approach was utilized—a skin graft! His ankle began to heal, and four months after arriving at the CASPCA, he was able to leave the clinic and go into foster care for further recovery. Jethro taught us that we are capable of managing critical and long-term patients even in the busy, challenging, shelter environment.

TODAY: Jethro is doing well in his foster recovery home. He walks on all four legs for 10-15 minutes several times a day and is getting stronger. His foster family says that he is very affectionate and cuddly. We are optimistic that he will be available for adoption soon.

COST:
\$1,030



DOLORES

CONDITION: Sadly, Dolores was transferred to the CASPCA after her owner passed away. Her appearance was unique due to a large mass attached to her face, which had been present for a while. The cost and risk of having the surgery had deterred her owner from having the mass removed. **TREATMENT:** Dolores was taken to surgery to remove the mass. In addition, the mass was removed, her ears were thoroughly cleaned, and several mats were removed from her coat. After surgery, Dolores spent a week in the clinic for close observation. She healed quickly and was soon adopted. **TODAY:** Dolores has settled in with her new family quite comfortably. All of her fur has grown back and her purr is jet engine powerful! Despite being a senior citizen, she's still playful and frequently chases a small stuffed mouse toy around the house. She shares her home with fellow adoptee Alfred and sibling Odette, both senior kitties as well.

COST:
\$1,335



CHICKA

CONDITION: Chicka was extremely fearful when she first arrived at the CASPCA, and due to her distrustful behavior, was housed in the clinic's calmer environment. Dachshunds love to bury themselves, so she was always given lots of blankets to hide in. Multiple attempts were made to win her over by offering spoonfuls of peanut butter, and after a couple of days, the vets were able to perform a more thorough examination. **TREATMENT:** Chicka was uncomfortable when her stomach area was touched, and a small piece of string was noticed coming from her rear end. She was sedated and it was discovered that the string was present throughout her entire gastrointestinal tract! In order to remove the string, five incisions were made in her gastrointestinal tract: one in her stomach and four in her small intestines. It was a long surgery, but Chicka did very well. She was started on pain medications and began to become more friendly and interactive with staff. **TODAY:** Chicka is now in a loving home and her new family reports that she is happily settled in and still loves burying herself under blankets.

EVENTS



BOW-WOW-WALK

Many steps were taken to save lives during the third annual bow-WOW-walk on April 30th. The K-9 2.5K was a huge success, with \$60,000 raised to benefit the animals at the CASPCA—\$10,000 over the goal! Team Natural Pet Essentials led the pack with \$8,000 raised, and more than 450 walkers and their four-legged friends turned out to strut their stuff to support the life-saving care at the CASPCA.

CRITTER BALL

The 2016 Critter Ball on Friday, October 14th, was another huge success for the Charlottesville-Albemarle SPCA, raising more than \$230,000 in net proceeds to benefit the animals at the shelter! Terrific live and silent auctions featured exciting packages and key initiatives, including our Art Camp and Spay/Neuter appeals. Attendees also supported our Compassionate Care-A-Van, a mobile unit that will help underserved populations in need of pet care in our community. To top off the night, guests grooved to Motown performers Kustom Made.



— “ —

*Then one
fateful day...
Vicki found
Blue and Blue
found Vicki.*

— ” —





meet blue & vicki



With a heart-melting smile and expert snuggling skills, Blue charmed everyone he encountered.

Despite capturing the hearts of CASPCA staff and volunteers, the lovable dog Blue was in and out of foster homes for nearly a year. Although Blue was cared for and loved by staff and foster families, he struggled without a person to call his own. Then one fateful day, after months of searching for a new companion, Vicki found Blue and Blue found Vicki.

It was another adoptable dog who originally caught Vicki's eye on the CASPCA website and who led her to the shelter. Yet, as fate would have it, Vicki saw Blue, decided to take him for a walk, and immediately fell in love with him. Although Blue needed some time to adjust and learn the house rules, Vicki provided him with the structure he needed to be his most lovable self. Blue loves his treats and, thanks to his fondness of food, he's learned lots from his mom about listening. Vicki and Blue are a team. They enjoy walks around the neighborhood, practicing yoga, and watching movies together. "Blue has captured my heart and that of my boyfriend, neighbors, and family... He has been a joy to have as my fur baby."

? IS THE CASPCA AFFILIATED WITH ANY NATIONAL ANIMAL-WELFARE ORGANIZATIONS?

Like most local animal shelters, the CASPCA receives no ongoing funding from the ASPCA or the Humane Society of the United States. If you want to help the animals in your community, give to your local community shelter or animal-welfare group.

? WHAT IS THE CASPCA'S POLICY WHEN ACCEPTING PETS?

Our doors are wide open to dogs and cats from Albemarle County and the city of Charlottesville, regardless of age or health.

? THE CASPCA IS A NO KILL ORGANIZATION. WHAT DOES THAT MEAN?

We are committed to saving all healthy and treatable animals in our care, regardless of how long they've been with us. We are a progressive, solution-oriented, animal-welfare organization dedicated to saving lives.

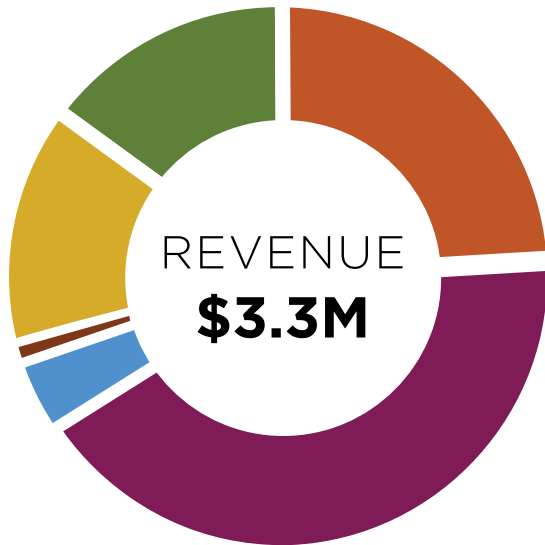
? WHAT IS THE CASPCA'S ANNUAL LIVE RELEASE RATE?

We collect and report our shelter statistics using a nationally recognized data matrix called the Asilomar Accords. We track and compare our progress through our Annual Live Release Rate, which is the rate of live outcomes for all cats and dogs that leave our care. In 2016, we were proud to achieve a Live Release Rate of 94 percent.

? IS THE CASPCA A POUND OR SPCA?

The CASPCA is defined by VA Code as a "private animal shelter" whose purpose is finding permanent adoptive homes for animals. We also serve as the contracted "public animal shelter" for Albemarle County and the city of Charlottesville to impound or shelter seized, stray, homeless, abandoned, unwanted, or surrendered animals. We are under contract and receive funding to serve as the city and county pound.

FISCAL



24%	City & County	\$808,842
42%	Donations/Public Support ...	\$1,377,966
4%	Investment Income	\$142,667
1%	Grant Income	\$42,500
14%	Products & Services	\$462,932
15%	Rummage Store	\$490,497
100%	TOTAL REVENUE	\$3,325,405

52%	Animal Care	\$1,762,081
25%	Vet Clinic	\$848,249
7%	Rummage Store	\$225,223
5%	Fundraising	\$166,429
11%	Administration	\$388,923
100%	TOTAL EXPENSES	\$3,390,905

BEQUESTS

\$269,091 included in total revenue
in donations & public support

PHILANTHROPY



The CASPCA relies on donation to purchase much needed equipment, hire top-notch staff, and provide crucial programs and services to the community. All the work we do would not be possible without the various forms of giving we receive. Ways you can give include donating to our Rummage Store, making a monthly recurring gift, giving in memory/honor of a pet or person, or even just offering a general contribution. You can also sponsor a pet, adopt a kennel, or purchase one of our memorial bricks.

Whichever way you have offered support in the past or choose to contribute in the future, we thank you and value your gift, as do the many animals helped every day at the CASPCA.

3,342

GENEROUS DONORS SUPPORTED
OUR ANIMALS IN 2016

LEGACY GIVING

One of the most crucial gift we receive is a legacy gift—a planned gift that costs donors nothing now but will provide essential support to the CASPCA and its programs for years to come. In 2016 alone, legacy gifts made up 20 percent of our total donations and were vital to our operations, enabling the highest standard of care for thousands of animals in need.

There are many ways you can ensure your legacy at the CASPCA. You can choose to name us in your will or to bequeath to us a portion of your estate. You can give in the form of stocks, bonds, or property, or you can arrange a gift annuity, a trust, or the transfer of unneeded life insurance. Please contact us today to learn more about these forms of giving.

ACKNOWLEDGMENTS

THANK YOU, PAWTNER

Virginia National Bank's ongoing support as a CASPCA "Pawtner" has enabled us to expand our reach in the community, funding key programs and helping us maintain our No Kill mission. Through the Pawtner Program, businesses and organizations support the lifesaving work at the CASPCA while being recognized as key leaders in our community. Pawtners receive special recognition throughout the year on our website, in our newsletters, and in signage at our facility, reaching thousands every year. Contact us today to find out more about how your business or organization can increase its visibility while helping thousands of animals in need throughout our community!

THANK YOU, PAWTNER

Eze Amos | Susan Kalergis
Miette Michie | Andrea Shirey



BAMA WORKS

The Bama Works Fund of Dave Matthews Band is administered by the Charlottesville Area Community Foundation, and has been a supporter of the CASPCA for many years. Established in 1999, the Bama Works Fund supports charitable programs primarily in the Charlottesville, VA, area but has also responded to a wide variety of needs both nationally and internationally. The fund has raised over \$40M and has made over 1,200 grants since its inception.



#ThanksToMaddie

MADDIE'S FUND

Charlottesville-Albemarle SPCA is a proud recipient of funding from Maddie's Fund® (www.maddiesfund.org), helping achieve a no-kill nation. #ThankstoMaddie®

Maddie's Fund® is a family foundation created in 1994 by Workday® co-founder Dave Duffield and his wife, Cheryl, who have endowed the Foundation with more than \$300 million. Since then, the Foundation has awarded more than \$208.9 million in grants toward increased community lifesaving, shelter medicine education, and pet adoptions across the U.S. The Duffields named Maddie's Fund after their Miniature Schnauzer Maddie, who always made them laugh and gave them much joy. Maddie was with Dave and Cheryl for 10 years and continues to inspire them today. Maddie's Fund is the fulfillment of a promise to an inspirational dog, investing its resources to create a no-kill nation where every dog and cat is guaranteed a healthy home or habitat. #ThanksToMaddie.



meet hannah & candace

When Candace first brought Hannah home, she was concerned that Hannah's past experience might make it difficult for her to connect.

Hannah, formerly Quinn, was the last of 51 dogs rescued from a hoarding situation. To help Hannah acclimate, her crate was placed in the kitchen with the door open. For two weeks, she made no noise and would rarely come into the room with Candace and her fiancé, Steven. One night, Candace was sitting in the living room when she heard a tiny yip. Hannah had barked! Candace recalls her first meeting with Hannah as kismet. Hannah was incredibly skittish but very sweet.

When Candace first held her at the shelter, Candace felt an overwhelming need to protect her and give her the home she deserved. Candace recalled thinking, "Even if she never opens up to us, at least she will be with a family who loves her." Hannah has come a long way in the past few months, and is now showing a sassy side! She loves to snuggle and is always right by her mom's side. Hannah has been a loving and very patient sister to her dog sibling, Dexter, who can be quite a handful. They frequently compete for Candace's lap. Hannah was the final piece Candace, Steven, and Dexter needed to make their family whole!



— “ —

Candace felt an overwhelming need to protect her and give her the home she deserved.

— ” —

THANK YOU FOR YOUR SUPPORT!

ESTATES & BEQUESTS

Estate of Eleanor Lee Barnes
Estate of Joan Barry
Catherine Garvey Trust
Elizabeth W. Purcell
Estate of Mary Emily Keetch Vincent
Estate of Theodore R F Wright

\$25,000 & UP

Anonymous
Vicky Castegren
Becky & Jim Craig
Employees of the Commonwealth of Virginia Campaign
Perry Foundation, Inc.

\$10,000-\$24,999

ACAC Fitness & Wellness Centers
Anonymous
Batten Family Fund
BMW of Charlottesville/Crown Automotive
Jennifer & Brian Corbey
Jan & Michael Cabbage
Farkas Family Foundation
Grace D. Riggs Fund
Kathy Murphy & Bob Enslow
Petco Foundation
Red Light Management
Glenn Rust
Susan D. Wells Sargean
Thomas C. & Mary Ann Hays Family Charitable Trust
Virginia National Bank

\$5,000-\$9,999

Anonymous
Bama Works Fund of Dave Matthews Band
Community Endowment Fund through Charlottesville Area Community Foundation
Crossroads Animal Hospital
Crutchfield
Scheline & William Crutchfield
Darrell & King Investment Counsel
Earl D. & Marian N. Olson Fund
Freestyle
Ivy Gardens LLC
Maddie's Fund
Oakwood Foundation
Orange Tree Foundation
Perrigo Company Charitable Foundation
Carol Ann Tomlinson Virginia Veterinary Specialists
\$1,000-\$4,999
Ancestry Pet Food
Andrew and Kelli Block Family Fund
The Animal Connection, Natural Pet Store
Animal Farm Foundation, Inc.
Animal Wellness Center
The Anna and Kirven Brantley Charitable Fund
Anonymous
Arnold F. Baggins Foundation
Megan Bailey
Rhea & John Baldino

The Bane Foundation
Becky Barlow
Nancy & David Bass
Angela & Steve Batten
Ruthe Battestein
Carol Bauer
Gina & Ronnie Bayes
Helga Bennett
Carolyn & Martin Betts
Katherine M. Bevacqua
Carmen & Alan Bewley
Mary & Nelson Bickers
Lauren & Landon Birkhead
Janet & Gene Bolla
Cynthia Bowers
Bernard T. Bress
Jackson A. & Jenny T. Brown
C. Neil & Carolyn S. Norgren Foundation
Cavalier Produce
The Charles Fund, Inc.
Gabriela & Stuart Chase
Chevron Matching Employee Funds
Julie Coiner
Lori Connolly
County of Albemarle
Mary Laub Cowan
Cynthia Tremblay Foundation, Inc.
Erin Davis & Chris Coffing
Cheryl Anne DeAngelis
Delta Chapter of Alpha Tau Omega Fraternity
Ethel & Larry deNeveu
Dorothea D. Nelson Charitable Lead
Annuity Trust
Douglas D. & Elaine M. Hadden Drysdale Fund
Marilynne & John Eklund
Judith & Michael Ely
Steven Epstein & Cary A. Brown

Janet & J. Gray Ferguson
Tom Fitch
Phillip Flavin
Flossie aka Floss the Boss
Elaine Fogliani & Doug Ponton
Kathryn Michelle & Hans Foss
Agnes M. Fotta
Carole & Keith Frazee
Elizabeth French
Brian J. Gallagher
Claire W. Gargalli
Georgetown Veterinary Hospital, Inc.
Kendall Giler
Angie Gunter
Hantzmon Wiebel, LLP
Harry A. Wright's Inc.
Christin & Adam Healey
Martha & Harper Hellems
Richard & Dianne Hendricks
Elizabeth Hyatt
The J&E Berkley Foundation
Judy & James Jaeger
Bill & "Pooh" Johnson
Connie & Jason Kapp
Pat & Jerry Kelley
Emily W. Kelly
Barbara & Brian Kennedy
Daria Kiselica
Sarah & Joseph Krenn
Kroger
Claudine Kundrun
Claudia & Rich Lawson
Susan & Thomas Likowski
Moir MacAvoy
Kelley MacDougall & Michael Pausic
Dudley Macfarlane
Madwoman Project
Mary Ann & Raymond Mancini

Manning Family Foundation
Shannon & Ryan McCall
McDonald's
Jenny Mead
Barbara Millar & Peter Thompson
Erica & Jim Millner
Monticello Animal Hospital
Lisa Ross & Robert Moorefield
Elizabeth & Gregory Morris
Jennifer Hays Morris
Natural Pet Essentials
Jen & Shane Nelson
Marilee & Paul Newman
Oak Hill Fund
Leslie & Nimmo Olsakovsky
Suzanne & Conan Owen
Pampered Pets
Pedigree Foundation
Judy & Charles Perkins, III
Pet Food Discounters
Joanne M. Phillips
Joyce & Richard Price
Monica & Michael Prichard
Rhonda E. Quagliana & William Barkley
Quantitative Investment Management Fund
Renaissance Charitable Foundation, Inc.
Rick & Susan Goings Foundation
Joyce Roberts
Sally S. Rogers
Demi Runkle
S. L. Williamson Company, Inc.
Liza & Mark Sackson
Karen Reid Sansom

Renee Savage & Glenn
Doggett
Elizabeth & James
Shannon
Patrick Sheehan
Ann & Phil Shiflett
Sleepy Dog Studio
James & Vicki Snead
Kimberly Snyder
Standish Family
Foundation Fund
Stephen K. Stearns
Peter Stoudt & Alice
Handy
Mrs. Virginia Sullivan
Sumner Gerard
Foundation
Marion & David
Szwedo
Claire M. Tieder
ting
Tony Fogliani Memorial
Golf Tournament
Will van der Linde
Vaughan W. Brown
Family Foundation
Malathi Veeraraghavan
& Shrikant
Ramamurthy
Joann & Mac Walker,
Jr.
Walmart Foundation
Mary Walter & George
Yin
Alison & Bernard Webb
Ceil & Kenneth
Wheeler, Jr.
Whitewoods Charitable
Foundation
Whitney & Anne Stone
Foundation
Anne & Tom Wild
William M. Camp
Foundation
Loring Woodriff
Catherine Wray &
Timothy Snider
Wrightson Ramsing
Foundation

\$250-\$999

AARP - Charlottesville
Chapter #192
Susan & David
Albaugh
Dallas A. Allen
Kathy & Brandt Allen
Chris, Becky &
Caroline
Allison
Catherine Amante
AmazonSmile.Org
Central
Nancy & John
Anderson
Mary & Warren
Andrews
Anonymous
Patricia & William
Apperson, Jr.
Sanja Arandjelovic
Donna Arehart & Gary
Chovan
Marilyn & F. Michael
Ashby
Autumn Trails Vet
Center
Gerald L & Robin D.
Baliles
Robert Baney
Cyrus Barger
Linda & Richard Barr
Maurice & Karen C.
Barros
Barry W. Battle
Rebecca Batton
Susan Bauer-Wu
Kim & John Beard
Mona W. Beard
Lea & Paul Becker
Rosemary & John
Beckett
James Beddow
Jesse Bejar
Mariana Bell &
Jonathan Baird
Benevity Community
Impact Fund
Patty & George
Benford
Kathryn Bettis
Julie Bibb

Margaret Bishop
Blue Ridge ESOP
Associates
Lori Bluni
Heather Boe
Anna Boeschstein
Rene Bond
Katherine Ann Bowles
Rebecca Bowyer
Susan & Thomas Brady
Helen M. Brite
Jayne Brittle & James
Jokl
Elaine & L. Scott
Brown
Faye M. Brown
Janice & Thom Brown
Sumner Brown & Herbert
Beskin
Pete & Florence Bruce
Donna & Michael
Bruggeman
Barbara Bruner
Renate G. Bruns
Alice & Thomas
Buchanan
Craig & Tracy Burpee
Thomas A. Caldwell
June & James Campbell
Canine Adventure
Carol & Jack Weber Fund
Carmen & Thomas
Carver
Bevin & Vito Cetta
Jessie Chapman
Charlottesville Pediatric
Dentistry
Charlottesville Tom Sox
Children of Benjamin H.
Word, Jr., M.D.
Ulla M. Chunn
Leone L. Ciporin
Rosa Collins
Steven L. Combs
Jessica Connelly &
James Morris
Cynthia & William Cooke
Lee & Brian Cope
Corporate Executive
Board Matching
Program
Kari & Kent Couling

Meghan Crider
Karen & Ben
D'Alessandro
Sandra & Alfonso Damico
Dammann Fund, Inc.
Betsy Daniel
Josh Daniel
David E. Post Family
Foundation
Ginny T. Dean
Barbara Deily
Deborah & Michael Del
Colliano
Donna S. Dempsey
Kate deNeveu & David
Murray
Dan & Rosetta
Dickerson
D. N. Dillon
The Dogg House
Ann & James Donovan
Scott & Sharon
Donovan
Heather C. Dow
Douglas & Sarah
duPont
Kathy & Kenneth
Eades
Peter Easter
Beth Eck
Barbara Elias
Elizabeth Johnston
Charitable Fund
Kimberly & Robert
Emery
Camilo Estrada
Eventbrite
Jeffrey B. Ferrill
Louise A. Finger
Peter Fink
Christine Fleckles &
Edwin Rushia
Wendy Flynn
Fork Union Animal
Clinic
Kay & Jeffrey Fracher
Cassandra L. Fraser
Nancy Fraser
Maggie Frederici
Fried Companies, Inc.
Sue & Frank Friedman

Frost Montessori
School
Barbara J. Frost
Joan & Donald Fry
Elizabeth Fuller
Flower Gale
Terry & Ted Gaudette
GE Foundation
Amanda Gee-Taylor
Andrea Gibson
Katharine & Alexander
Gilliam
Andrea Owen Gilmer
Nancy Goldstein
Patricia Gordon
Janet Gorman
Susan & Clyde
Gouldman
Terry & Andy Graff
Catherine Clay Greene
Dedrea Greer
Jane & Bruce Greyson
Chuck & Sue Tice
Grossmann
Leanne M. Grove
Lawrence A. Groves
Carolyn & David Grow
Kim Guenther & Ellen
Braun
Andrew Haines
Susan K. Hall
Wayne A. Hall
Carol & James Hallett
Sarah Hamfeldt
Bonita & John Hanks
Jeff & Alissa Hansen
Robert & Molly Hardie
Diane Harner
The Harrell Family
Fund
Melissa & John
Harrison, III
Anna Jane Hayes
Dr. & Mrs. James W.
Hayes
Marina M. Heiss
Barbara & Michael
Higgins
Judy & David Hodge
Sandra & Robert
Hodge

THANK YOU FOR YOUR SUPPORT

Brenda Fishel
Hodgson & Daniel
Hodgson
Debra & Jeff Holloway
Hoo's BBQ
Anne Hooff
Connie Horan
Hot Yoga
Charlottesville
Mr. & Mrs. Kal W.
Howard
Alice & Walter Hoyt
Betty & Fred Hudson
Hayes & Jessica
Humphreys
Gregory Hunt
A.H. Huntington, III
Suzanne Ibbeken
Lindsay Ideson
Independent Order of
Odd Fellows
Ingleside Training
Center, Ltd.
Danielle Ivanova
Jack Brown's Beer &
Burger Joint
John Jackson
Timothy Jana
Brenda Jarrell & James
Call
Kathryn Jarvis &
Gregory Propp
Joan T. Jay
Jeans for Generosity
Amy Jeffrey
Betty W. Jennings
Mary Helen Jessup
Susan & Michael
Johns
Diane L. Johnson
Emilie Johnson
Holly A. Johnson
Madelyn & James
Jones
R. Scott Jones &
Christine Stacy
Sally & Zane Jones
Troy & Margo Jones
Joe Kalkstein
Lori M. Kaufman
Kimberly Kavanagh

James G. Kavanaugh,
Jr.
James & Sharon Kelley
Mary Anne Kelly
Julie Kelsey
Mr. & Mrs. T. Kelsey
Mr. & Mrs. J.A. Kessler
Jr.
Eleanor & Joseph Kett
Kilwins
Cecilia J. Kimata
Joan S. Kindig
The Kingfisher
Foundation
Debbie Kirby
Everett L. Kirby
Beatrice Kirtley
Ani-ta & Kenneth Kite
Susanna Klosko
Jason Knickmeyer
Eva L. Knight
Keith & Nancy Knoell
Wanda & Anil Kochhar
Bob Koeze
Cathy & Chris Kramer
Robert A. Kuemmerling
Lake Family
Hope Lally
Rebecca & Bruce
Lanahan
Helen & Robert Landel
Josh Laseter
Sheila & Edgar Lawson
Ann Leake
Robin & Chuck Lebo
Robert Lenahan
Cordelia S. Lenz
J. C. Leonard
Jackie Lichtman &
Russ Linden
George W. Logan
Allyson C. Louthan
Denise Lunsford &
Richard Brewer
Joyce MacDonald
B. Gail Macic
Pamela Margaux &
Claude Thibaut
Marilyn & John
Marshall
Ryan Martin

Mason Insurance
Agency, Inc
Paul Massey
Masters Auto Body, Inc
McCann Family Fund
Mary & Robert McIver
Richard M. McKinnon
M.H. McLaughlin
Amy McLeskey
Brian Paul Menard
Teresa & H. Otey
Meriwether
Merkle
Sharon Meth &
Nicholas Brandt
Miette & George
Michie
Mid-Atlantic Bath
Solutions
Billie Ann Midthum
Amy Mikeska & Adam
Soroka
Carrie Miller & Mr. John
Joyce
Emily Privette Miller &
Matt Miller
Nancy B. Miner
Carol H. Minetree
Ron Mittelman
Andrew Molesey
Tanya & Charlie Monk
Montague Miller & Co.
Real Estate
Mary D. Moon
Dahne & Chip Morgan
Lisa & Donald Morin
Susan B. Morris
Michelle Moshier
Jeff & Ellen Moyers
Courtney Mudd
Murray Elementary
School
Ann & Carter Myers
Manfred Nettek
Network For Good
Roberta & William
Nixon
Bobby & Karen Nolan
Wallace & Donna
Nunley

Nunley-Satira Family
Fund
Amy & Scott Nunnally
Debbie O'Brien
Robert O'Connell
Steven Olson
Courtney Orebaugh
Chris & Gary Owens
Shashank Parekh
Kay & Davis Parker
Debra & Glenn
Parsons
Anne Patton
Pawprints Boutique
Jane & Robert Paxton
Shelley & George
Payne
Susan & Lewis Payne
Judith & Mac Peatross
The Pet Palz of
Greenwich
David Peterson
PetSmart Charities, Inc
Donna & Phillip Pfeifer
Courtney & Eric Pfister
Thomas & Elizabeth
Pitt
Carrie L. Pledger
Sarah Plummer
Vernon M. Powell, Jr.
Carol & Andrew Price
Raising Canes Chicken
Fingers
Mary Anne Irene
Randles
Deborah & Tayloe
Read
Greg & Laurie Redfern
Barbara J. Reid
Relay Foods
Peter Rhett
Ryan Rhodes
Christine & Jeffrey
Riley
Elizabeth H. Roberts
Heather Romberger
Janice & Victor
Rosenberg
Carolyn & John
Rosenblum
Blanka Rosenstiel

Patricia Ross
Deborah & David Rowe
John & Karen
Rowlingson
Phyllis & John Savides
Gertrude Scherman
Allison & Tom
Schildwachter
Pete Schmidt
Elizabeth Scott
Roberta H. Senechal
Richard P. Shannon
Margaret & Matthew
Shapiro
Rachel & Andy
Shelden
Vaden & Ginny Shields
Michael Skrutskie
Allison & John
Sleeman
Gracie & Craig Smith
Louise Smith
Nancy & Richard Smith
Anne Snyder
Ray Sotelo
Bobbie Spellman
St. Anne's Belfield
School
St. John, Bowling,
Lawrence &
Quagliana, LLP
State Farm Companies
Foundation
Viktorja & Douglas
Steel
Jodie Stevens
Andrea Stierstrand
Stillfield Fund
Sue & Charles Stoke
Virginia Stokes
Erika Struble
Don Sundgren
Jackie & Don Sutton
Richard & Cecile
Swenson
Kerri Taylor
Ellen Teplitzky
Anne B. Ternes
Evan Terrell
Susan J. Thomas

Elsie & Mac
Thompson, Jr.
Linda & Robert
Thomson
Three Notch'd Brewing
Co
TIAA Charitable
Rebecca & Leon Tilley
Torey M. Todd
Jane R. Tolleson
Marsha Trimble & Kent
Olson
Sally Trude
Sally Tucker & William
Cocke
Rebecca Turner
Sarah E. Turner
Linda K. Underwood
United Way - Thomas
Jefferson Area
UVA Department of
Otolaryngology
Head & Neck
Surgery
UVA Health Physicians
Group
Dolores E. Van
Beth & Rich Van Hook
Anne & Tony
Vanderwarker
Michael & Heather
Vanderweide
Fannie Mae Rankin
Vinci & Umberto Vinci
Virginia Federation of
Humane Societies
Virginia Foot & Ankle
Surgical Associates
Eleanor G. Voldrich
Chris VonFrieling
Alison & Daniel Walden
Anissa & Bill Walker
Tina Walker-Brinson
Christy & Brian
Wamhoff
Jeff Ward
Nancy & Kevin Watkins
Whitney Watson
Bobbie & Sam Wells
Dolores Wells
Kathy & Mike Wesson
The Whiskey Jar

Judith White & Samuel
Green
Nancy Whitman &
Robert Campbell
Lucy & Ben Whitmer
Duncan M. Whittome
Jane & Robert
Whitworth
The Wilcox Family
Andrea & Philip
Williams
Lynn & Tom Williams
Blair K. Williamson
John & Jean Wood
Sharon & Ron
Wormser
Howard Wright
Denise & Stephen
Yetzer
Laura Yin
Curtis D. Yohe
Connie & Christopher
Zazakos, Jr.
Hadley Zeavin
Fran Zimmel

\$100-\$249

Diana Abbott
Bill & Carolyn
Achenbach
Allan, Peggy, & Ryan
Thomas & Elizabeth
Allan
Denise Allensworth
Christine Allison &
Robert Knight
Patricia & Joseph
Alwardt
In Honor of Catherine
Amante (Cathy)
Debra & Philip
Ambrosini
Linda & Mike Amos
Megan Amundson &
Franklin Ray
Memet Anday
Alan E. Anderson
Dale Anderson
Margaret Anderson
Vicki M. Andreae
Anonymous
Lynn Ann Appleby

Al Aqualino
Robert & Elizabeth
Aronson
Thomas Baber
Norma J. Bailey
Reed Bailey
E. Gray Baird
Marianne & Calvin
Baker
Chloe Ball
Barbara Ballantyne
Winn & Rod Ballard
Lionel Balmforth
Bankers Insurance,
LLC
Robert & Darlene
Barber
Ruth Barclay
Mary L. Barker
Donna & George
Barlow
Elsa & Thomas Barnett
Ed Baron
Mauree & Rob Barrett
Lori Baruch
Gail Bashore
Matthew J. Bassignani
& Alan Higgins
Jervey & Tryon Bauer,
Jr.
Nancy & Dan Bauer
Kristina Baum
Angela Bazarre
Kristine & John Bean
Karen & Kenny Beasley
Carol & Hillis Beck
Michael Bednar
Brenda & David Beech
Richard Behr
Rodney & Sherryl
Behrens
Ruth & Malcolm Bell, III
Joseph Bellacera
Donna & Lee Bensey
Ida & Brett Berkobein
Janice H. Bernhard
Danielle Gay Berrey
Gary Berry
Stephanie Bertolucci
Patricia Miller Beswick
Nicole & Earle Betts
Bryan Bickers

Jane & Rodney
Biltonen
Phyllis J. Binder
Linda M. Birch
Jodi Blaylock
Rose Marie & Ralph
Bledsoe
Blue Ridge Equine
Clinic
David & Catherine
Boardman
Sally C. Booker-James
Jo Ann Arcieri-
Bostwick & Charles
Bostwick
Suzanne G. Bovenizer
Dek & Connie Bowen
Barbara Ann Boyce
Robert and Karen J.
Boyle
Daniel Bracey
Alice & Donald Bradley
Mindy Branch
David Brear
Melanie & Doug Brede
Sue & William Breit
Norman Brenbridge
Ella & Robert Bretz
Bonnie & Dick Brewer
Jackie Bright & Justin
Ross
Victor Bristow
Roxanne & Ron
Broadbent
Janis Chamberlain
Brooks
Brown Exterminating
Company
Melinda & Richard
Brown
Jacqueline Brownfield
John B. Browning
Tim Bruce
Victoria & Peter
Brunjes
Kelly & Eric Bruton
Gina Bull
Susan & Thomas
Bunting
Elizabeth Burdash
Robin Burke
Lucy R. Burnette

James Burnley
Kay & Pat Butterfield
Nancy A. Butters
Britony Buxton
Kathy & David Byars
Barbara Byerly
Wendy K. Caldwell
David & Gerry
Callaghan
Edward Campbell
Etta M. Campbell
Mary Campbell
Kate Canterbury &
Brian Fitzgerald
Angela Canterini
Robert Cantrell
Gerard Capone
Linda & Frank Cardella
Francis & Jilann Carey
Susan Carkeek
Susan Carl
Finis Carrrell
Hope D. Carson
David C Carter
Sara Cary
Meredith Cary-
Morrisette
Joanne & Terry Casey
Esther Lynn Cash
Caspari
Patricia Cass
Brian Castor
Ellen Cathy
Elizabeth G. Cauthen
CFA Institute
Multimedia Publishing
Department
Charles D. Chadwick,
Jr.
Sara & Bill Chambers
Kara Chandeysson
Carol L. Chandross
Charlee Channing &
Brian W. Chase
Maria & Robert Chapel
Charlotte Chapman
Charlottesville
Dogwood Festival
Ann Charlton
Phil & Jeanne Chase
Ming-Jer Chen
Marcia & Jim Childress

THANK YOU FOR YOUR SUPPORT

M. A. Chiulli
Maureen Moore Clark
Inge Clausen
Patricia A. Clifton
Brian Coffing
Beck Cohen
Bohbye Cohen
Deborah Cohn &
Charlotte Patterson
Irene & Kenny
Coleman
Christina & Douglas
Colley
Claire Colley
Katie Collins
Benjamin Combs
Greg Compher
Congregation Beth
Israel Religious
School
Timothy & Corinne
Conlon
Glen Conrad
Eileen & Robert Conroy
Gwyn & Brian P.
Conway
Dora Conway
Caroline Lenox Cook
Linda Cook
Patricia A. Cook
Cheryl K. Cooper
Linda Cornick
Charles and Jackie
Cottrell
Herbert Cottrill, Jr.
Sandra Council
Cousin
Jamie Covell
Ellen Craig
James E. Craig, Jr.
Joyce Craig
Elizabeth M. Cranmer
Virginia Craven
Patricia Crawford
Janice Creasy
Faye Creighton
Adele & Carl Creutz
Kay Cross
Michael & Kathryn
Cross

Patricia & Thomas
Cross
Betty & Dale
Crutchfield
Lori Cwalina
Janice & William
Dalton
Patricia Ellis Dangelo
Patricia M. Daniele
Ellen Daniels
Harry Dannals
Audrey Ann Dannenberg
Darden School of
Business
Karen G. Davenport
Hamilton Davis
Kim Davis
Lee Davis
Indigo Day
Francesca & Eduard
de Lange
Maddy & John Deal
Phyllis & Russell Deane
June & Gerrit Degraaf
Dan DeLong
Laurel Dent
Mark Dest
Joseph DeVincentis
Mr. & Mrs. Diamond-
Jones
Alexandra DiGuardo
Rodney S. Dillman
N.D. Dillon
Betty & Ed Dinwiddie
Leslie Disharoon
Janet Dix
Susan Donnell
Ian Doran
Angela & Chad Dotson
Bernice & Andrew
Drapopoli
Diana Drake
Kira & Conrad Drennon
Barbara & Roger
Dudley
Tom Dudley
Dulaney, Lauer &
Thomas, LLP
Susan & Tom Dungan
Ernest D. Dunn

Leslie Durr & Mark
Fletcher
Phyllis & Alvin Dwier
Sue Ellis Dyar
Donna & Donald Eddy
Edgemont Farm, LLC
Melvin "Raindrop"
Edmonson
Sherry & Earnest
Edwards
Lawrence Eicher
Owen Eichfeld
Shirley & Bob Elliott
John & Betty Elliton
Mark J. Elson
Terry & Kenneth
Elzinga
Ellen English
Mimi Ensminger
Louise Epstein &
Stephen Marzen
Ann A. Ergler
Richard Ergler
Deborah L. Erickson
Denise E. Esposito
Tom Estes
Deborah Evering
Janet & Bern Ewert
Expertise Painting, Inc.
Ann B. Faris
Anne Marie Farrar
Katherine & Paul Farris
FastFrame
Carol Faust
Ruth E. Ferguson
Jim & Betsy Fernald
Betsy Ferronato
Jennifer & John Fetsko
Fidelity Charitable Gift
Fund
Sara Fishback
Seamane Flanagan &
Rob Gowen
Mickie Flanigan
Julie & John Flevarakis
Cecil R. Floyd, Jr., CPA
PC
Mason & Richard Fogg
Patricia Foley
Marty Fontenot

Jean & Ed Fording
Bob & Lisa Forsyth
Mary Jean & Donald
Foss
Foundations Child
Development Center
Megan Francis-Ogden
Amy & Harry Franze
Adam Frazier
Jill Fredrikson
Free Union Country
School
Janis & James Freeland
Marsha & John Frick, Jr.
Charles Frieden
Charles Friedman
Tara & Steven Friedman
Friends of the family
Sangitha & Rod Fritts
Julie & Bill Fudala
William Fulton, Jr.
Shirley A. Gallagher
Lauren M. Gallaspy
David & Michael Gallik
Kristina Garcia & Roy
Wade, Jr.
Sally M. Garland
Marjorie Garmey &
Melinda Baumann
Paula & David Garrett
Jean Gary
Laura Gasparini
Gaston & Wyatt
Nancy K. Gercke
Kristina & Anthony
Getter
Florence Geyer
Struthers & Fred
Gignoux
Carol A. Gilchrist
Margaret Gilliland &
Michael Pegan
Grace & Theo Giras
Global Impact
Kurt Gloeckner
Godfrey Property
Management, Inc.
Janie & Ron Goldberg
Stephanie Golden
Tricia & Michael
Golden

Diana Goldman
Karen & Neal Goodloe
Marvin & Brenda Gose
Betty L. Goss
Margaret Gossweiler
Robert & Anne
Gossweiler
Gerald & Audrey Gottlieb
Grand Piano & Furniture
Company
Benevolence Fund
Richard Grandage
Marie Elena & Michaux
Grant
Antoinette & William
Gray
Lisa Graziano
Susan Greene & Larry
Stopper
Virginia Greene
Matt Greenspan
Caroline & John Griffin
Karen Grimes
William Grindle
Annie Groeber
Allen Groves
Andrea Gruber
Summer & Matthew
Gruber
Carmi Gutherz
Kevin Haag
Matthew Haas
Martha Haertig
Mary & David Haglund
Deborah S. Hall
Jessica Hall
Amanda Hallstead
Robert Hamfeldt
Julia Hanks
Dr. & Mrs. George
Hanna
Ann Hardy
Wayne Harlow
Rachel Harmon
Jerry & Melissa
Harrelson
Lelia & Frank
Harrington
Buddy Harris
Mark & Mary Ann
Harris

Delia Harrison	Dick & Mary Howard	Christine S. Kennedy	Linda Leshowitz & Tim	Marguerite E. Matter
Nancy Harrison	Jon Howard	Jane Kerewich	Brazill	Paige Mattson
Barbara Hartless & Joe	Penny & Tom Howard	Tanya Kerr	Sharon & Douglas	Joanne May
Sutherland	and Georgia	Kathy Kessler	Leslie	Margaret Mayer
Wendy & Edward Harvey	Rodenhauser	Paula Kettlewell	Yvonne Leveque	Doris & Paul Mays
Jeremiah & Jennifer	Richard & Susan	Art & Sue Keyser	Vera Lightfoot	Nancy McAdams
Hasher	Howard-Smith	Linda Keyser	John & Deborah	Emily & Brian McCahill
Barbara Haskins	Elizabeth Howell &	George & Katherine	Lindbergh	Jan & Larry McCarthy
Louise & William Hay	Rick Scotson	Kidder	Carol Lindsey	Louise McConnell
Pat Hayman	Kristina Howell	Ruth & Robert Kidney	Rebecca Lipchak	Susan McConnell
HCPS Department of	Reese & Geri Howell	Carrie Kimbrough	Deborah & Douglas	Jeanne M. McCusker
Technology	Jeanne & Albert Huber	Anne King	Little	Deborah McDaniel
Frederick & Meriflo	Paul Humbert	Lynn Kirby	Niall Little	Camp McElveen
Heblich, Jr.	Linda & Don Hunt	Vernon & Mary Kirby	Ryan Llewellyn	Amanda & Rob
Peter Hedlund	Patrick Hunt	Ingrid Kliethermes	Donna Lloyd	McEwen
Stephen Heim	Grace A. Hutcheson	Michelle Knudsen	Charles & Stella Loftin	Catherine & Eugene
Achсах E. Henderson	Juliana Illari	Dave Koehn & Ashley	Gay & Kenneth Loftin	McGahren
Lily Henderson	Andrea Ireland	Matthews	Kathleen & Patrick	Keith & Kimberly
Mary Jo Dollins	Darius Jahann	Erwin M. Koeritz	Long	McGinnis
Hendricks	Jennifer & Rob	Jamie Kollar	Samuel & Jane Long	Karen McGlathery
Loren Hendrickson	Jamison	Laura Kollar	Jennifer M. Longbrake	Kathy & Sam
Margery C. Henneman	Kate Jensen	Deborah & Robert Kozura	Barbara Loveland	McKelvey
& Bosley Crowther, III	Marianne & Arnold	Sherry Kraft	Gayle & Bryan	Lois McKenzie
Jevera Hennessey	Jensen	Henry & Alexandra	Lovetere	Susan Hale Mckibbin
Morela Hernandez	Lucy Welbourn	Kucinska	Stephanie Lowenhaupt	Terri & Robert
Hess Corporation,	Johnson	Prakash & Mahmooda	Henry & Pat Lukas	McKnight
Marketing	Bruce Jolly	Kulkarni	Vicki Lutes	Mary Ann B. McMahon
Departments	Anita Jones & Bill Wulf	David Kutas	Jane M. Lynch	Sheila McMillen
Sara Hess	Judy Savage Jones	Howard Kutchai	Lynne Brubaker	Carrie & Robert
Stephanie & Charles	Susan Jones	Richard & Jane Lacasse	Photography, Inc.	McNamara
Hess	JP Morgan Chase	Denise E. Lacour	Sandy MacGregor	Pauline & George
Lisa & Dan Heuchert	Foundation	L.C. Landry	George & Sybil	Meehan
Terry & Jack Hickey	JustGive	Claiborne Lange	Mahanes	B J Meeks
Roxy Hicks	Lucia Kaestner	Kim A. Langford	Gary Mahoney	Anne Megibow
Thomas Scott Hicks	Joan & John Kammire	Frances Lapan	Hillary Maitland	David M. Mehringer
Diane Hillman	Marsha & Jim Kannry	John Lauer	Richard Maney	Sandra & Hunter
Wendy & Jay Hirsh	Heather Karp	Gregory Lavin	Andria Manka	Melton, Jr.
Frederick & Mary Hitz	Angie & Stan Kask	Adria LaViolette	Valerie Mann	Lynette & Izzy
Bruce Hobbs, Jr.	Katherine Hatton &	Joyce & James Lawrence	April Manning	Menchero
Lysa Hodgson	Richard Bilotti Fund	Mary Ellen & Jon	Anne & Brooks	Frank Mercadante
Susan & Robert	Kathleen E. Howard	Leachtenauer	Marshall	Meredith Mercer
Hodous	Revocable Trust	Karin League	Michael & Donna	Meriweather Mowing
Linda C. Hogan	Minnie Kay	Sheri Laubach	Marshall	Service
Carol & David Hogg	James & Jane Keathley	Katherine Southwell	April Martin	Carol Merrill
The Holland Family	Dean Kedes	Lee	Beverly Martin	Elizabeth & Richard
Alice & Paul Holtz	Richard & Johanna	Tom & Martha	Graciela & Michael	Merrill
Virginia & Robert Holub	Keeling	Leinbach	Martin	Connie Messemer
Home Instead Senior	Michele & Kenneth	Shelbia & Alan Lengel	Joan & Ramsey Martin	Shan & Mark
Care	Kellermann	Macy & Michael Lenox	Judith Marymor	Meulenberg
Barry & Sheryl	Brigitte Kelly	Debbie & West	Leigh Mason	Jennifer & Brendan
Horowitz	Cynthia Kelly	Lescanec	Jennifer & Rick	Meyer
Ellen Houle	Lucie S. Kelly		Matheny	Derry Miller-Meyung

THANK YOU FOR YOUR SUPPORT

Mickey
Rachel Lloyd Miller &
Jim Miller
Dixie Mills
Clara Mincer
Mincer's University
of VA
Imprinted Sportswear
Helen & Henry Minich
Jennie Sue Minor
Marc & Shizuka Modica
Jean & Guy Moffat
Beth & Jeffrey Monaco
Gerald Monnat
Karen M. Monson
April L. Montgomery
Voe & Robert
Montgomery
Moore Masonry, Inc
Jo Ann & Deloy Moore
Kyna & Andy Moore
Matt & Ann Moore
Patricia S. Moore
Scott Moorhead
Elizabeth F. Morgan
Bonnie Morgan
Juliana Morgan & Sashi
Theresa Morgoglione
Anne & Scott Morrill
Catherine Morton
Tammie Moses/Moses
Tax
Mosquito Squad of
Charlottesville
Libby Palmer
Mossman
Mascha Mowry
Deborah M. Murray
Langhorne K. Murray
Merrick & Steve
Murray
Marsha R. Musser
Rose Myers
Ruth B. Myers
Daphne & Paul Myhre
Jessi Nadkarni
Native Son, LLC
Sandra & Hans
Natterer
Sarah & Kenneth
Neathery, Jr.

Lisa Nelms
Bonnie Neuss
Alex Newell
Bill & Betty Newman
Lindsay C. Nolting
Ann & David
Normansell
Julia L. & Richard
Nunley
Martha & Dan Nunziato
Chris Oakley & James
Beall
Mary Elizabeth Oberle
Daniel O'Connell
John O'Connor
In honor of Stella, Bo &
Knox O'Connor
Carolyn & Mark O'Hara
Amy & Tom O'Leary
Dr. Theresa Olivo
Barbara & Carl
Omohundro
Dr. Angela Orebaugh &
Tammy Wilt
O'Suzannah
Sarah Katharine Owen
Daniel A. Owens
Sarah Ozturk
Bullett Palmer
Edwina Pancake
Ellen Parker
Kristina & Eric Parker
Matt Parker
Jim & Gracie Parks
Diana & Harry Parlette,
III
Mary Charlotte Holland
Parr
Roger Parry
Margaret & Monte
Parsons
Pass Thru Fund
Beale Payne
Susie C. Payne
Ericka Pearce &
Michael Williams
Cheryl C. & Norman
Pearson
Shirley & Arthur
Pearson

Ellie, Jenna & Mark
Pedersen
Penn Veterinary
Supply, Inc.
Jean Perry
Christine Peterson
Katherine & Larry
Pettit, Jr.
Charleen & Neal Pfaff
Kay Pfaltz
Clorisa Phillips &
Alexander Horniman
Lucia & Robert Phillips
Lois & Warren Pitts
Lee & George Politis
LF & Frances Ponton
Wayne & Lori Ponton
Ponton's Quantum Leap
Fitness
Katelyn Pontore
Eleanor S. Porter
Marshall Poulson &
Carroll Justis
Emily & Enos Powell
Chelsea Power
Kimberley & Barry
Prendergast
Edward and Barbara
Preston
Jean & James Price

Monique & Bill
Pritchard
Promac, LLC
David Propst & Jennifer
Fowler Propst
Paula Lynn & Joseph
Quagliana
Jean Quigley
Susan & Jim
Quisenberry
Judith F. Ramsden
Anne & Vernon Raque
Carol & Kenneth
Rasmussen
Sara Rasmussen
Beverly Ratliff
Jane & George Ray
Megan Raymond
Julia O. Rea

Rebecca's Natural
Food
Claude Reed
Cathy & David
Reinhard
Relatives & Friends
Judith & Jerome
Rendich
Christine & Nicholas
Reppucci
William R. Reusing
Carol Reynolds & Doug
Nelson
John Reynolds
Karyl Reynolds & Bill
Whary
Karen & George Rich
Dorothy Richards
Meredith & Larry
Richards
Elaine Richardson
Deborah & Dean
Riddick
Christina Riebeling &
Scott Wiley
Bonnie & Robert Riggs
Jane E. Rike
Sarah Rinehart
Dirk & Barbara Ringers
Anne Ripley
Claudia Rival
Susan & Sandy Rives
Alan Y. Roberts
Rita & George
Robinson
Brian Roddy
Jonathan Rodenbaugh
Martha & Brad
Rodgers
Briarley C. Rogers
Doris & Frank Rogers,
III
Joanne & Alan Rogol
Leah Romanoff
Nancy & David Ross
Pam & David Rossetter
William H. Rough
Rovers Recess
Virginia & James
Rovnyak
Carolyn Rowe

Judith & James Rowe,
Jr.
Melissa L. Rowland
Joan E. Rudel
Amy Ryall
Kathy Ryals
Alison L. Ryan
Karen Ryan
Shannon Ryan
Joy & Joe Sabol
Janet & George Sakell
Peter Araujo Salas
Ted & Barb Sander
Delnavaz Sanjana
Jill Saperstein
Courtney Sargeant
Angela & Robert
Sawyer
Isabel & Chip Sawyer
Susan & Leo Scaggs
Paul & Sandra
Kristen Scheller & Matt
Brinckman
Peggy & Peter
Scherman
Geri & Bruce Schirmer
Christine & Eric
Schrank
Fred & Mary Schubert
Joan A. Schuette
Richard F. Schupp
Cindy Schutt
Karen Schwenzer
Betty C. & John Scott
Bill Scott & Ann
Proudlove
Joanne Scott
Carla K. Scouten
Frank Scroggham
Rachel J. Setear
Renee M. Severin
Mary & A.C.
Shackelford, Jr.
Hubert A. & Ann S.
Shaffer
John Shannon
Alfred Shapero
Shirley & Warren Shaw
Christine Shearer
Booger & Wally Shell
Debbie Shelor

Nancy & Gene
Sherwood
Judy Shields
Vicki S. Shifflett
Leah & Kevin Shiraishi
Gerald Shoemaker
Wendy L. Showers
Wanda & David
Shuster
Margaret & Fred Sibley
Mary & William Sihler
Rachael Silver
Silvergate Realty, LLC
Theresa & David
Simmons
Mary & John
Simonette
Erin & Travis Simpson
Joann M. Simpson
Susan Singhas
Marta Skrybailo
Richard A. Skwarlo
Heather Slater
Carolyn A. Smith
Cindy L. Smith
David & Anne Smith
Earl Smith
Kelley Smith
Laura Smith
Peggy Smith & Andy
Larner
Martha Smythe
Linda & Jeff Sobel
Solidarity Crossfit
Marie & Hal Souder
Patricia Spacks
Carole Springer
Tim Sprinkle
Audrey Pace-Sprouse &
Charles Sprouse
St. Gabriel Organics
Janice & John Stalfort,
II
Starr Hill Events
State Farm Insurance
Companies
Margaret & Richard
Stavitski
Rebecca Steele &
Clarence Fisher
David Steffan

Brenda & William
Steigman
Danielle & Wes Steiner
Philip Stenger
Deborah Stewart
Lisa & David Stewart
Katie & Kevin Stiffler
Jennifer & Joshua
Stinson
Martha & Scott Stinson
Paula & George Stone
Clarissa & Stephen
Street
Heather Streich
Cindy & Robert
Strickland
Pamela Strong
Eleanore B. Sturgill
Suzanne & Todd
Sturman
Cynthia & Joe Sullivan
Ellen Roberts Susi
Beverley W. Sutherland
Marilyn Swinford
Kristin & Joseph
Szakos
Malissa Takacs
Candace Taylor and
Steven Sweat
Danielle Taylor
Elizabeth & Harrison
Taylor
Lisa Taylor
Robert F. Taylor
Caroline Teague
Geri Teeter
Debbie & Gregory
Telep
James Terrell
The Juice Laundry
Alexandra Theriault
James Thomas
Pam, Randy & Jennie
Thomas
Marshall & Virginia
Thompson
Robert M. Thompson
Holly Thomson
Nancy Thornberry
Kevin & Theresa
Thorne

Prudence & Michael
Thorner
Ken & Joy Tilley
Timberwood Grill
Jane & Tommy Tirrell,
III
Chuck D. Tobin
Ann Toms
Lamar & John Toole
Dr. & Mrs. Thomas
Towberman
Katherine & William
Towler
Nancy C. Townsend
Mary & Edmond Traille
Miles Treakle
Anne Treichler
Michele & Wade
Tremblay
John L. Trimmer
Neal Trivedi
Susan & James Turner
Suzanne Turner
Nancy & Peter Tuz
Ron & Lynda Tweel
Anna Degli Umberti
University of Virginia
Alumni Association
John Updike
Justyne & Joseph Van
Dyke
Robert J. & Rebecca L.
Vanlier
Amy Varner
Ronald Vereen
Paul T. Vesely
Donna & Dick Vinal
Lynda & William Vining
Tihamer & Gloria Von
Ghyzcy
Stephen F. Vondra
Renate Voris
Vivian Wade
Dr. & Mrs. Joseph J.
Waff III
Marianne Walendowski
Kathryn Walker
Anne Wallace
Tim Wallace
Arden B. Walters
Mary Ellen Waltz

Ava Ward
Barbara J. Warren
Warrendale Sales
Elaine Warwick
Michelle & Dave
Warwick
Stuart and Kay
Watterson
Diana Webb
Susan & Gregory
Webb
Douglas Webblink
Martha & Peter
Webster
Rebekah Webster
Mike & Janet Weeks
Tammy Weisman
Christopher Weiss
Linda & Gareth Weldon
Christy & Anthony
Wenzel
Leanna West
Jean & Munsey Wheby
John & Margaret
Wheeler
Hester H. Whitcher
Barbara White
Debbie White & Roy
Cadoff
Lonni & David White
Timothy Whitehurst
Morgan & Marlene
Whiteley, Jr.
Rebecca & Zach
Whitlow
Carol Whitman
Ursela Widmere
Christine L. Wiedman
Caroline & Bill Wilhelm
Jean & Morton Wilhelm
Wenche L. Wilkins
Beth Williams
Dr. Denise Williams &
Mr. Christopher Yates
Jennifer E. Williams
Molly Williams
Loretta & Kevin Willis
Patty & John Willis
Jan & John Wilmer
Barbara B. Wilson
Elizabeth Wilson
Bill Wingfield

Latane Wise
Alyssa Wittenborn
Ann & Jerome Wood
Barbara & Richard
Wood, III
Gretchen Wood
Preston Wood
Rebecca Wood
Peggy & Bob Woodall
Elizabeth Wooding &
Kenneth Cady
Connie Woodruff
Andrea I. Woods
John & Denise
Woodson
Allison & Gene Wright
Joe & Lisa Wright
Meghan Yeatts
Jessica Young
John Zani
Rebecca Zee
Ginny & Rick Zeller
Barbara & William Zorn
Linda & David Zuby

\$1-\$99

David & Connie
Abdullah
Lori Abrams
George & Sharon
Ackerman
Alexa N. Adams
Donna & Michael
Adams
Ellen Adams
Janet Adams
Nina B. Adams
Marsha L. Affeldt
Peggy Aglubat
Craig Kushel Agule
Mo Ahmed
Mary Frances & John
Aiken
Hasan Al Mulhem
Albemarle
Charlottesville Pilot
Club
Susan J. Albert
Thomas Albro
George Charles Alex
JudyLynn Alford
Buki Aljiji

THANK YOU FOR YOUR SUPPORT

Samantha Alleman
Betty Allen
David Allen
Diane & Wayne Allen
Greg Allen
Mark Allen
Mary Allen
Stacy Allenbach-
Stunes
Abby Alley
Dave Alley
Sharon Almond
Stephen & Carolyn
Altenderfer
Gary Alter
Angela Amat y Leon
Peter & Heather Amato
Phyllis & James
Ammons
Lisa Amols
Darla Anderson
Ian Anderson
Mary Anderson
Steven & Anne
Anderson
Malcolm Andrews
Melissa Andrews
Leslie Louise Andrus
Gail Angell
Bobbie & Jeffrey Anker
Anonymous
Charles Antrobus
Nancy Armstrong &
William Holet
Kathy & Jeff Armstrong
Mary Lee & Charles
Armstrong
Sara W. Arneson
Augusta & Kevyn
Arthur
Eden Artz
Juan Ascoli
William & Deborah
Ashby
Joyce P. Atwood
Nicole W. Audibert
Barbara C. Aulebach-
Ross
Pamela Ayres
Cindy Baber
Joe Baber

John Baber
Krystal Baber
Bright Ideas
Colette Bahn
Suzanne & Michael
Bailey
Carrie Baker
M. Leonard Baker
Susan Ballagh
Christina Ballard
Edith Ballard
Karen & Bootie Ballard
Judy Bancroft
John Bandes
Lisa Bange
Gerda Bansleben
Barbara Kirkman &
Clark Baumbusch
Lindsay Barbara
Barbara & Dennis
Barbour
Elizabeth Barbour
Mary A. Barnabei
Donna Barnd & Chris
Moskaluk
Marva A. Barnett
Lint Barrage
Sharon K. Barrett
Barrett-Johnson &
Associates
Julie L. Basic
Marty Bass
Becky & Chad Bassett
Alexandra Bates
Chris Batt
Denise & Keith Batt
Battelle Always Giving
Aunt Karen
T.R. Baun
June & Grayson Beale
Lynly Beard
Zakira & Val Beasley
James E. Beck
Mary Elizabeth Beck
Joan Beckwith
Elizabeth & Wayne
Beddow
Dolores G. Bedell
Kimberly & Richard
Bednar

Deane & Mark
Begiebing
Melody & Daniel
Beisner
Winnie Bernard
Bill Bernstein
Ed Berres
Linda B. Berry
Anne Bertrand-Guy
Barbara D. Best
Tao Tao Best-Harris
Vickie & Gary Bibb
Stephanie D. Bickers
Ted & Peggy Bidwell
Daniel Bieker
Christine Billies
Patricia & Robert
Bingler
Linda Birch
Rosemary & Eric
Birkholz
Theodore Bittner
Bettie W. Black
Sheila Blackford
Bronwyn Blackwood
Patsy & Eric Blaesing
Mary Kay Blake
Janice Blanch
Betty & Paul Blincoe
Carla & George Blincoe
Melvin L. Blincoe
Ralph J. Blincoe
Diane Bloom
Katherine Boardman
David & Nancy
Bogdonoff
Cynthia & Michael
Boggs
Cathy & Randy Bogle
Andrea & Robert
Bogley
Doris A. Bohon
Kathy Bohorfoush
Lori Boles
Stephanie & Stephen
Bolton
William & Sheller
Bolton
Barbara R. Bonesteel
Andrew & Frances
Boninti

Frances Bosserman
Jane Shannon & Don
Bourret
Andre Bower
Kathy Bowers &
Richard Comfort
Dana Boyd
Mary Lou & Tom Boyd
Sally Boyd
Christopher Boyers
Leigh Boyes
Lynn Boyter
Corliss Bradley
Shannon Bradley
Melissa Brads
Diane M. Bradshaw
A. Clarke Brady
Olivia Branch
Margaret Brandis
Babi & Randy Branger
Kim & Kevin Branham
The Brashear Family
Aubrey & Pamela
Breedon
Kristin & John Breen
Lydia S. Briscoe
Michael & Melanie Britt
Cate Broaddus
Dora Kay Brockman
Erik & Karen Brooks
Jennifer Brooks
Andrew & Joyce Brown
Carol & Robert Brown
Debi Brown
Elliott, Wendy, Paige &
Scott
Jeffrey Paul Brown
Kathi Ann Brown
Laura Brown
Mary C. Brown
Richard Brown
Sylvia M. Brown
Macey Brown
Skylar Brownfield
Christina Bruce
Maggie Bruno
Delores & David Brush
Anne Brushwood
Bronwyn Bryans
Janice Bryant
Lois Bryant

Terri & Wayne Bryant
Catherine Bub
Joseph Buchan
Carol W. Buckner
M. Denise Buddendeck
Grace Bull
Beverly Bunch
The Bunn Family
Maura Burchette
Jean E. Burke
Martha Burke & William
F. Goodrich
Roger & Cindi Burket
Nichole Burkholder
Katheryn Surface
Burks
Carrie Burns
Charlotte Burns
Jasmine Burns
Whitney Burns
Ananda Burra
Eleanor Busa
Carol Gibson Busching
Rebecca Bushey
Judith & Jerry Butler
Joyce & Frank Butros
Nancy & Bob Button
Lulu
Railton Cabbell
Laura Caggiano
Kimberly Calderaro
Caldwell & Orkin
Emily & Michael
Callahan
Julie & Patrick
Callahan
Mary-Catherine Calvert
Christine & James
Camblos, III
Ruth Cameron
Antonio & Denise
Campbell
Kayla Campbell
Krista Campbell
Jenny Canalicchio
Alice & Jonathan
Cannon
Shelly Canterbury &
Chip Bumgardner
Mary Hill Caperton

Carol & Michael A.
Caplan
Rose & Rob Capon
Kelly Cappio
Adrienne L. Carlee
Katie Carlson
Rebekah L. Carmel
James Carnes & Clark
Hantzmon
Ann M. Carney
Michelle Caron
Kathy Carpenter
Martha A. Carpenter
Sandra & Joey Carr
Marshall Carter
Steven & Sally Carter
Terry Carter
Cindy Cartwright &
John Frazee
Marie Casalini
Debie Cash
Cathy & George
Carpenter
Jamie, Tate, & Gid
Elaine & Chuck Cayton
Lou & Janice Centore
Central Virginia
Chapter Military
Officers Association
of America
Connie Chan
Byron & Andrea
Chandler
Marty & Harvey
Chaplin, Jr.
Lori Chapman
Jen Charlebois
Idette Charlie
Charlottesville
Automotive Refinish
Supply
Christine Charters
Valerie Chasin
Catherine & Aldo
Chavez
Michael Childress
Meta Chisholm
Michael Chorzempa
Lynne Christian
Joy Claibourn & Paul
Martin
Sidney Schulman

Katherine Clark
Elis & Sam Clarke
Anita Clayton
Joan Clements
Roy M. Clements, Jr.
Shelby T. Clements
Sarah & Tom Click
Sheena Clift
Haley Cline
Margaret N. Cloutier
Howard & Kimberly
Cobb
Barbara Coble
Mary Ann Coffey &
Murphy Moss
Pat Coffey
Richard Cohen
Lauren Coldren
Jeffrey Cole
Sam Cole
The Coleman Family
Betty Coleman
Lori Coleman
Susan L. Coleman
Rebecca T. Coles
Carolyn Colley
Vreni & David Collier
Jenny Collins
Anne M. Colvin
Leanne Colvin
Sherry Comer
Holly Compton
Christina Condit-
Chadwick
Kim Condrey
Donna Conley
Dot & Tom Conner
Brian Connolly
Brooke Conover
K. Daniel & Sue Ann
Conquest
Anne & Carter Conrad
John & Nancy Cook
Polly, Gregory, & Lucia
Carrie & M. Truitt
Cooper
Christopher D. Cooper
Isabella Cooper
Liam & Katya
Copeland
Beth Coppin

Poppa & Momma
Coppin
Core Knowledge
Foundation
Nyssa Cornelius
Laura C. Covert
Paula Coyner
Susan & William
Craddock
Susan B. Craig
Janis Craun
Cheryl Cravino
Jane Crawford
Jane & Bruce Crawford
Makenzie Crawford
Lori Crayon
Ed Creasy
Charles Crenshaw
Thelma Crenshaw
Sid Creutz
Brenda & Joey Crider
Ruby & John Cronk
Debra & Spencer
Crowder
Ethel Crowe
Crozet Veterinary Care
Center
Will Crutchfield
Beth & Gary Cuccia
Jennifer Cui
Claire & James Culver
Susanne Cummings
Elizabeth & John Curry
Christi Curtis
Michael Cushing
Dorothy Dabney
Neely Dahl
Kirsten Daisley
Ellen Dale
Susan & Michael Daley
Jenine Daly
Vic and Ace and
Biscuit, Muffin, Martin
and Sophie
Trish Darby
Barbara & Hugh Darnell
Adrienne Darrah
Carli Daugherty
Linda David
Jacquelyn Davidson
Sarah Davies
Angela Davis

Bridget A. Davis
Doris & Randy Davis
Ruth J. Davis
Samantha Davis
Sarah & Hal Davis
Teresa Davis & Bill
Nelson
Ann Davison
Heather Davison
Susan Dawson
Nathan Day &
Samantha Toet
Baxter De Deo
Thomas J. De Maio
Mildred S. Dean
Gerald S. Deane
Mary & Peter Deaver
Donald & Elaine
Debanico
Ashley Deering
The Deigls
Sandra DeKay
Diane & Hugh
DeLaunay
John Delehanty
Joan P. DeLong
Squid DeNatale
Rob & Adrienne Dent
Patricia DeNunzio
Elaine DeSimone
Helen E. Destrempe
Terri Di Cintio & Chip
King
Cora Diamond
Deborah Diamond
Wendy & Daniel
Dicandilo
Jason, Charlotte,
Brittany, Dalton &
Emma Dickerson
Heather & Bill Dickey
David W. Dienner
Marguerite & Thomas
Dierauf
Robin Dierking
R. G. Dimberg
Riley, Tucker, Elliot &
Cathy Dimberg
William Dirienzo
Winifred Disandro
Mary Divine
Miss Mirabel Divita

Ernie & Janice Dodrill
Penney L. Dodson
Nancy Dofflemeyer
Dolce Vita Baskets
Lois & Jerry Dollens
Patricia A. Doniger
Sarah Donnelly
Katheryn Doran
Barbara Dorrier
Karen & Donald
Dougald
Victoria and Josephine
Dougherty
John D. Dove
Dave & Noel Draine
Jayleane Drucker
Charlotte Drummond
Michael Duddy
Melissa Dudek
Cindy Dudley
Sharon & Sonny
Dudley
Maggie and Matt
Duensing
Alice E. Dulaney
Ann & John Dunn
Joyce Dunn
Lauren Dunn
Linda & Robert Dunn
Lynda L. Dunn
Jean Dunnigan
Mildred Dunstan
Jessica Dupont &
Andrew Fickley
Jordan DuPont
Katelyn Durkin
Jane Durrer
Leah Dymek
Beatrice & Richard
Dzagan
Mark Eades
The Kittlesen/Edelen
Family
Spicer Edmonds
Carole Edwards
Helen M. Edwards
Jennifer Ehlers
Amelia Sims
Eleanor, Mazie,
Catherine & Ellie
Elizabeth & Richard
Worch

THANK YOU FOR YOUR SUPPORT

Lois Dunfee Elliott
Steve Elliott
Judy Ellis
Ellie Ellison
Karen & Dave Emmitt
Angela Enciso
Steve Engel
Nancy A. Engleman
Lisa Eorio & Cliff
Maxwell
Petie & Ernie Ern
Sandra & Eugene
Essner
Jennifer Estep
Jeff Etten
Erika Eurkus
Jess & Zach Eustace
Andrew Evans
Marc & Karin Evans
Elizabeth Ewing & Skip
Platt
Charlene Exline
Jessica R. Exline
Sue Fader
Bonnie Falbo & Dan
Ehrman
Justin Falco
Paula Fallon
Dawn Falls
Louise Farbstein
Martha Farlow
Mercy Farnum
Mary Farrelly
Tamela Farris
Sallie V.P. Feild
Jo Ann & Wayne
Ferguson
Monica & Chris
Ferguson
Sue Ellen & Steve Fey
Horace E. Fidler
Lesley Field
Andrew Lee Fielding
Dan & Mary Fielding
Emmy Fields, Cambria
Jones and Margaret
Ann Graves
Miriam Fields
Mike Fietz
Judith L. Fike
Nicolas Finck

Page R. Flannery
Barbara H. Fleming
Andy & Pam Flynn
Susan Lee Foard
Tavia Fonseca
Kathy Fontenot
John D. & M.E. Forbes
Gabriele Ford
Nancy R. Ford
Katie Forkin
Jody Forman
Thomas Forrester
Brian Pusser &
Rebecca Foster
Alton Fox
Ken Fox
John Francis
Lisa Franco
Bobbin Franklin
The Franks Family
Moria Frazer
Kate Frazier
Laurence Fredrick
Sheila & Jeremy
Freeman
Beth Freking, MD
Cynthia French
Melissa Frost
Martha Fruehauf
Anna Fuller
Betty Frankhouser
Katie & Wayne Fusco
Joby Gaicalone
Jennifer Gaines
Tracey Galbraith
Mary Louise Gallagher
Gallerycorp, Inc.
Kimberly Gallo
Kate Galloway
Ellie Gamble
Jeffrey Gander
Marie Ganyard
Camille Garcia
Rise M. Garcia
Andrea Gardner
Harriet K. Gardner
Julie Garmel & Jeff
Greer
Jeffrey Garrett
Doris & Richard
Garrison

Fay Garrison
Pam Garrison
Claudia Garthwait
Sarah Gaskin
Renee Gay
Lisa Gay-Milliken
Linda K. Gehle
Elizabeth B. Gentry
Catherine L. George
Brandi C. Gibbons
Beverly & Donald
Gibson
Bela Giese
Suzanne Gigante
Carroll & Robert Gilges
Shirley & Jay
Gillenwater
Marsha & Joseph
Gillertain
Amy & James Gillespie
Mary Cooper Gilliam
Maryanna L. Gilmer
Ray & Eileen Gilmer
Linda Girvin
Ali Glassie
L.D. Glosser
Corinne Glover
Cortlandt & Andrew
Glover
Sylvia Glover
Barbara Goldberg
Lucy Goldman
Linda B. Goldstein
Eillen & Jose Gomez
Terri Gomez
George & Carolyn
Good
Stephanie Good
Roberta & Wallace
Goode
Richard & Donna
Goodling
Betty Mars Goodman
Howard E. Goodman
Kate Goodrich
Mark and Barbara
Goodson
June Goodwin
Emily Gordon
Shea Tiller

Lise & Christopher
Gordon
Chris Gore
Rachel Goretsky
Leon P. Gorman, III
William Schoonover
Scott & Karen Goss
Jared Govan
Anne Gowdey
Patricia & Stephanie
Graham
Sarah I. Granger
Adrienne & Ron Granitz
Beth Grant
Martha M. Grasty
Kay Graves
Missy Graves
John & Mary Graysar
Great Terms Insurance
Agency
Betsy & Michael Greco
Dorrit Green & Michael
Rodemeyer
Mary Alice Green
Bennet Greenberg
Jean Greenstadt
Roxanne Greer
Joan & Peter Griffin
Stephanie Griffin
Dana Grimm
Patricia & Christopher
Grimm
Sunny & Dan Gritsko
Pat Grizzel
Patricia Groeninger
Alice & Donald Gross
Deena Gross
Kathy Gross
Meredith P. Gross
Margaret M. Grove
Barbara & Thomas
Grzymala
Teri & Andrew Guertler
Carole A. Guillemin
Camille & Robert
Guinnane
Xiaoti Guo
Margaret & Howard
Gutgesell
Stephen S. Guy
Susan J Hackman

Marion W. Haddow
Christine Haden
Elizabeth & Michael
Haden
Aleisha Hagy
Christopher Hahn
Otis Hahn
Temple & Britta Hahn
Heather Haines
Melissa Hairston
Susan S. Hakala
Hale Pet Door National,
LLC
Cleo S. Hall
Lara & Kyle Hall
Sharon & Jonathan Hall
Dick Halliwell
Diane Halvorsen
Emily Hamilton
Terry Hamlett
Anna Hammarskjold &
Peter Sushka
Daryl Hammond
Susan Hammond
Mary A. Hamrick
D. W. Hand
Evelyn & Eugene
Haney
Haney Family
Marilyn & James Haney
Doris Hanger
Lori A. Hanger
Danielle Hanley
Noreen & Joseph
Hannemann
Mary Hansen
Diane Hardee
The Hardy-Moore Family
Diana Harlow
Laura Harlow
David Harmon
Thomas Harmon
Ann S. Harris
Robert Hart
Hilary Harwood
Julie & Glenn Hasenbus
Maia Haske & Miro
Amato
Scout & Boo
Janet D. Hatcher

Robert Hattler
India & John Haun
Kedra Hauser
Kimber Hawkey
Hugh & Debbie Hawkins
Meredith & Tim Hay
Aisha Hayat
James & Mary Lynn
Haycraft
Joan & Bob Haynes
Polly B. Haynes & Craig
Campanelli
Gregory Hays
Sumter Hazzard-
Adolph
Nancy & John Healey
Patricia Hearn
Jackie & Richard Heath
Mary Hebblethwaite
Scott Height
Susan Held & Michael
Montgomery
Lisa & Mark Helprin
Maria & Daniel
Hemmings
Anne Hendrick
Carol A. Hendrix
Emily & David Henley
Melissa Henriksen
Melissa Hensley
Cheryl & Michael Heny
Matt Hepler
Teresa Hepler
Marilyn Hermann
Denney Herr
John Herr & Mary Jo
Herriman
Susan & Dale Herring
Erika Herz
Priscilla Hesford
Nell & David Hibbitts
Anne Hicks
Deb Higgins
Heather M. Higgins
Abe A. Hildebrand, Jr.
Colin Hill
Corinna Hill
Helen Hill
Sarah Hilterbrandt
Sarah Hinkle
Darlene Hinton
Theresa Hinton

Marilyn D. Hocking
Meret Hofer
Kathleen Hoffman
Kirsten Hoffmeister
Cindy Hogan
Brandy & Todd
Hollabaugh
Barbara Holland
Nancy Holland & Victor
Lee
Veronica M. Holland
Lt. Hollomon
Marsha & Ed Holloway
John E. Holmes, Jr.
Harry Holt
John Holt
Ted & Mona Homyk
M Burke Hood
Nancy Hooker
Colleen Hoover
Sally & Dale Hopkins
Charlotte & Avery
Hoppe
Nicholas Hoppe
Tracey Hopper & Douglas
Campbell
Nancy & Michael Horne
Kyle Horst
Patricia Horton
Susan & Robert Houde
Gail H. Houser
Colin Howard
Daryl & Mattie Howard
Mr. & Mrs. W. N. Howell
Sherrard H. Howen
Lani Hoza
The Kids of Waylands
Grant
Jill & Walter Hubbell
Wayne & Janet Hudgins
Janice R. Huebner
Brittney Huff
Karen R. Hufford
Sarah E. Huggins
Tracy Hughes
Karen Hukari
Tahira Hulburt
Robin Huntington
Bob Hyde
Independence Resident
Council
Lillian Inge

Linda & Michael Irons
Michele Irvine
Ava Jackson
Evelene M. Jackson
Jackson-Via Girls on
the Run
Beverley J. Jacobs
Rebecca Jacobson
Dr. & Mrs. John A Jane,
Jr.
Amy Jansky
Sutton Jaskot
Omadi Jazarah
Roux Taylor
Gregory Jecmen
Virginia Jedda
Robertta Jennings
Jim Price Chevrolet
Jim Snead Ford
Lindsay & Jacob Jobe
John & Cici
Col. Michael M.
Johnson
Heidi Johnson
Jean & Nick Johnson
MC Johnson
Sherry Johnson
Tina Johnson
Caroline & Jerry Jones
Darrell & Jean B. Jones
David W. Jones
Diane & Robert Jones
Emily Jones
Lisa & Jeremy Jones
Phyllis Jones
Rhonda & John Jones,
Jr.
Suzanne W. Jones
Terri Jordan
Terri & Jonathan Jordan
Leah Jung
Ann Junkin
Margaret A. Kahler
Cemile Kahveci
Carey Kalagher
Janice Kaltenbach
Anna Kamstra
David Kane
Virginia & Allan Kanter
Susan Kaplan
Kacie Karafa
Audrey & Lewis Kardos

Michelle & John
Karpovich
Amy & Scott Karr
Cri Kars-Marshall &
John Marshall
Paul & Janet Kasparson
Cheryl Kasper
Jim Kaufman
Anne & Paul Kawas
Eric & Carole Keathley
Arlene W. Keeling
Debbie Keener
Kip Keener
Nicole & Michael
Keens
Kimberly Keese
Hilde Keldermans
Mocha
Aileen Kelly
Barbara Kelly
Greg Kenley
Joan A. Kent
Kevin Kerr
Eugene Kesler
Barbara & Danny
Kesner
Lorrie Ketterman
Edgar & Mary Keyton
Elise Kiewra
Susan Kiley
Rachel Kincaid
Allan & Ada Marie
Kindrick
Linda King
Susan E. King
Anne Kinsley
Tommy Kinstle
Caroline & P. Kennedy
Kipps
Rachel & Kyle
The Kirby Family
Mary Beth & Bob Kirby
Emily Kirk
Gail Leftwich Kitch
Gary & Lorraine Klein
Alyssa Kletnik
Bonnie & Daniel
Kliamovich
Sharla Klingel
Samantha B. Knapp
Sherry Knight
Jean Knorr

Patsy E. Koestner
Katie Kois
Sandra C. Korfanty
Pamela Kosmach
Milena Koussa &
Brendan Murphy
Brenda & Dave Kovarik
Robert B. Fudge &
Steven J. Kretzmann
Laura Kross
Dave Krovetz
Linda Krutul
Denise Kulp
Doris Kuttesch
Shirley A. Kyger
Labus Family
Julie C. Lacy
Julia Laffond
Mary Ashley Laine
Edward Lamb &
Pamela Norris
Rebecca Landau
Kathleen & Nicholas
Lang
Brenda F. Langdon
Charles Langham
Dorothy Lansing
Mr. & Mrs. Tony
Laquintano
Nora & Robert Larsen
Jean Larson Mineart
Gina Lascano
Jennifer Lail Lassiter
Daphne D'earth
Latham
Karen & Bertrand Latil
Edward H. Laughlin
Debbie & Dom Launi
Michelle & Ralph Law
Carolyn Lawlor
Peggy J. Lawrence
William Lawrence
Lisa Layne
Nadia Lazo
Tony Le Vere
Rita Leadem
Kellie Leake
Pam & Charles
Leathers
Sally LeBeau
Martha D. Leclere

THANK YOU FOR YOUR SUPPORT

Rebecca & Thomas
L'ecuyer
Kelsey Lederman
Beth & Wendell Lee
Judy Lee
Maryann & David Lee
Ruth & Robert Leffers
Phyllis K. Leffler
Robert LeHeup
Linda Lemieux
Anne Lemley
Patsy Leonard
Sandra Leonard
Scott Lepto
Barbara & Eli Lesser
Betty Letlow
Timothy S. Levenberg
Melissa Levy
Dean Lewis
Peyton & Bill Lewis
Alexis Leys
Ruth & Randall Lillard
Kaylee Linaberry
Lindsay T. Milby, Inc.
Carol & Ky Lindsay
Ginny & Gordon
Lindsey
Humphrey Liu
Patricia Llewellyn
Patricia A. Locke
Deborah & Andrew
Lockman
Lisa and Raymond
Lockwood
Andrew and Sarah
Lofton
Sarah Logan
Marsha & Ivan Login
Carole & Leonard
Lohman
Cartie Lominack &
Kristine Hall
Jennifer Lonas
Bianca Loreda
George Loukas
Candice & Jason Love
Bradley Lovelace
Sandy Loving
Gail & Bill Lowe
Geri Lowe
Patricia O. Lowry

Courtney Lucier
Ginell LumHo
Judy Lung
Kathy Lung
Xinh Luu
Galina Lyles
Kenny Lynch
Carl & Ruby Lynn
Cheryl Lynn
Patricia D. Lynn
Shawn T. Lyons
Margie Swanson, Vicky,
Lisa and Wendy
Ian MacLean
Leslie & Kendall
Madigan
Sarah Magerfield
Dea Mahanes
Catherine & Thomas
Mancuso
Barbara J. Mann
Lauren Manning
Dana Mann-Tavegia
Rene Marberry
Elizabeth Margutti
Anna Marin and Sisi
Pohl
Ioana Marin
Diane & Neal Marks
Sharon & Charles
Marks
Denise & Tommy
Marley
Helen & John Marr
Ann Marshall
Karen Marshall
Michele Martin &
Preston Syme
Shirley R. Martin
A Friend
Brian Mason
Holly & John Mason
Kate Mason & Mike
Fitts
Boo & Bill Mathers
Susie & Murdoch
Matheson
Nan & Granddaddy
VanFossen
Chris A. Matthews

Richard & Cathy
Maupin
Carol Lynn Maxwell
Thompson
Eleanor G. May
Nancy May
Nancy & Gerry Mayer
Sarah Mayer
Brittany & Andrew
Maynard
Constance A Mays
Marie & Donald Mays
Randy Mays
Deborah McAndrews
John McAneny
Joseph Mcaneny
Amber McCain
Sue Ann McCarty
Gena McClanahan
Rebecca McClure
Ernest McCravy
Mary McCue
C. McCullough & K.
Ahern
John McCullough
Judith & Walter
McDaniel
James & Jean
McDonald
Margaret D. McElroy
Barbara R. McGill
Megan McGovern
Dana & Patrick
McGrath
Avis McGuiggan
Nicholas McIntosh
McKenzie McLain
Mary Linda McLearn
Betty & David
McMullen
Deborah & Patrick
McPhillips
Richard Meadows
Barry Meek
Sarah Meister
Janet B. Meistrell
Robin & David Mellen
Virginia Melton
Amy Melville & John
Schroll
Sandra Mendez

Emily Mercadante
Merck Foundation
Leih Merigian
Merkle | RKG
Carol & Thomas Merlo
Johannah & Garrison
Merrill
Phyllis W. Merritt
Anne & Marty Meth
Eileen Meyer
Stephanie Meyers &
Mark Lieberth
Wendy Michalski
Elizabeth & David
Michel
Rick & Chita Middleton
Alyssa Mikytuck
Janet Miles
Jarrett & Stephen
Millard
Anne R. Miller
Bethany K. Miller
Susie Bruce & Dan
Miller
Elaine & Richard Miller
Julia F. Miller
Linda Miller
Stella Miller
Vicki Miller
Vicki & Brian Miller
Wayne Miller
Lucy Millinder
Teresa & Scott
Millirons
Patsy Minahan
Patricia & Elliot
Mininberg
Lynette Minnich
Christopher & Denise
Mislow
Georgia Mitchell
Samantha Mitchell
Marie Mitchem
Bettie Mohler
Elizabeth Molina
The Montpelier
Foundation
Judith Moody
Gary R. Moon
Judith & Harold Moon

Trevor L. Moon
Barbara & James
Moore
Channon Moore
Donna & Donald
Moore
Douglas & Joyce
Moore
Karen Moore
Natalie Moore
Danielle Morgan
Jackie Morgan
Kara Morgan
Karen Munro & Amanda
Morgan
Megan Morgan
Nicki Morgan
Sadie Morgan
Cresse Morrell
Barbara Morris
Tad Morris
Josh Morris
Joyce & Thurman
Morris
Joyce H. Morris
Lynn P. Morris
Michael Morris
Pamela Morris
Sharon Morris
Suzanne Morris
Terry Morris
Heddy Moskaluk
Todd J. Mounce
Tracy Mourton
Betty J. Moyer
Julie Moyer
Elizabeth Muir
Julia & Jose Mundo
Peggy & Larry Mundy
April Muniz
Diane Murphy
Max Murphy & Elain
Heffelfinger
Catherine Murray
Tara E. Murray
Kaitlin Mussomeli
Maria Nable
Blaise, Cihlar, J.V., &
Nikola
Cindy Napier

Allan Nathanson &
Jeanine Braithwaite
Carolyn & Ronnie Neal
Kelly Kay Near
Bettie B. Neblett
Savitri Nekola
Sandy Rakowitz
Susan A. Neuhauser
Crystal & Nathan
Newell
Emily & Richard
Newman
Stephen Ng
Christopher Nicholas
Beverly Gay Nichols
Carly Nicholson
Betty Jo Nickles
Nicole R. Forbes
Krista Niece
Daniel & Elizabeth
Nissen
Lauren Noe
Dave Norris
John Norwood
Will Nugent
Belinda O'Berry
Barbara G. O'Brien
Shawn Odowski
Emily Ogden
Beverly Ogilvie
Cara J. Ohlsson
Norma & Dick Ohmes
Jan & James O'Kelley
Judith Oliva
Karen Olsen
Erin & Michael O'Neill
Christine & Kent Oots
Mary Orecchio
Kathleen Orr
Mary Orsini
Arlene T. Oslin
Donna & Jack
Ostrowski
Outlaw Design
Company
Hunter Overstreet
Colleen Owens
Anne Marie Pace
Leon
Donna Packard
Sonya Padilla
Barbara Page

Mary Page
Arlene & Nick Page
Daniel Pailing
Betty B. Paine
Carolyn Panza
Charles Pardue &
Susan Himelrick
Kim Robyak Park
Aya, Rose & Suriya
Iulia & Christian
Parrington
Tammy Parrish
Charlotte T. Parsons
Angela Pascoli
Catherine Pasternak
Betsy E. Patrick
Addielayne Patterson
Ann Patterson
Barbara & Charles
Patterson
Dr. & Mrs. James W.
Patterson
Anne M. Paul
Robert Pavour
Cindy J Payne
Dare H. Payne
Peace Lutheran
Church
Jo Anne Peach
Ben Cohen
The Pease Family
Christine Pedersen
Melinda Peery
Paula & Donald Pell
Trenton Pence
Susan Pennett
Marie Peppers
Pepsi-Cola Bottling Co
Hillary Perez
Kathryn Perez &
Rachel Baum
Alison Perkins
Kathleen & Joseph
Perpetua
Cory Perry
Sandra H. Perry
Bradley and Tracy
Pettit
Fern Pettit
Amy Pfaltz
Susan Ordway Pfaltz
Michael Pfautz

Mary Pfeffer
Anne & Olivier Pfister
Katie Philbrook
Lynn Phillips
Whitney Phipps
Physical Therapy at
ACAC
Jacquie & John
Pickering
Meg Pickering
Elaina, Juliana,
Miranda, Sylvie and
Hazel
Janet & Jim Pietrovito
Bob Pineo
Josie Pipkin
Paula & Jim Pippin
Lisa & Steve Placa
Tim Plant
Stephanie Polackwich
Rebecca Polan
Don Rybarczyk & Carol
Polen
Mary C. Pollard
Carol Pollock
Maryline & Jason
Pollock
Katharine Popp
Joseph Porterfield
Linda Porzio
Dotty Posey
Rosemary Postle
Shirley Powell
Ike Presson
Leana Bragg Price
Holden, Monica &
Michael Prichard
Mary & Billy Proffitt
Dennis R. Proffitt
Helga Prosser
Michelle Prysby
Betty Puckett
Nick Pullaro
Trista Pullaro
Sarah & Leonard Pulley
and Rebecca
Vaughan
Marian Purcell
Eric Purks
Stacey Puskas
Carol Quaif

Sarah & Chad
Raaymakers
Katherine Rabe &
Stephen Hutchinson
Grace Radhuber
Leigha Rae
Michael Ragosta &
Kiyoko Asao-Ragosta
Hugh A. Ragsdale, Jr.
Karen & John Raham
Robert & Gail Ramey
Helene Ramos
Marjorie Ratcliffe
Jeff Ratliff & Margot
Elton-Ratliff
Susan & Lloyd Raupp
Brooke Ray
Irene S. Rebolz
Karie Reed
Kelly Reeves
Jeannine Regan
Kristina Reid Black
Richard & Sandy Reid
William & Helen
Reifenberger
Kate & Caroline Reilly
Leslie M. Reiman
Koen, Evan & Elsi
Reinicke
Heena & Stephen
Reiter
Cheryl & Bob
Renaghan
Harriet Resio
Helen & Albert
Reynolds
Amanda Reynolds
Dorothy Reynolds
Edwin & Sherry
Reynolds
Janice & Chris
Reynolds
Tracey & Patrick
Reynolds
Susan Rice
Susan Riddle
Riff Raff Productions/
Sour Fish Events
Diane Riley
Patricia & Daniel Rinald
Jennifer Rinehart &
Edward Foss

Mary Rinehart
Jason Riner
Lauren Riner
PJ Riner
Catherine Riso
Mary Ritchie
Melanie Rivera
RMC Events, Inc
Courtney Roane
Jean & Robert Roane
Frances Roberson
Rose Roberson
Maureen W. Roberts
Tonya & John Roberts
Goodwin Robertson
Sally Robertson
Shirley F. Robinson
Timothy Robinson
Marcy Rodeffer
April Rodgers
Kristen Rogers
Vivi Rogers
Ruth Rollins
Gertrude & Jan Romer
The Rooney's
Jacqueline Roper
Stephen Rose
Rosewood Village
Hollymead Assisted
Living, LLC
Bill Ross
Erin M Ross
Jeannette L. Ross
Marion & Walter Ross
Scott Roth
Marilyn & Harold
Rothstein
Martha T. Rothwell
Catherine & Chad
Rowe
Lilly Rowe
Lauren Rowley
Kathleen Roy
Anne & Chip Royer
Sydney Rubin
Karen & Stephen Rudd
John Runkle
Judith Rushia
Charles & Patricia Rusk
Alease Russell
Sandy Russell
Kristine Ryalls

THANK YOU FOR YOUR SUPPORT

Dawn Ryan
Katie Ryan
Lee K. Ryder
Julie Rydlund
Maritza Saavedra
Gerald Louis Sackett
Joren Sacre
Ellen & Mike Sadler
Susan Salko
Charles Sallwasser
Susan & George
Sallwasser
Karen L. Salmonson
Gail & Dick Samuels
Matt Sanders
J. David & Betty Sapir
Annie & Paul Sartori
Carl & Kathryn
Saunders
Diana & Terry
Saunders
Eliza Saunders
Lenore Savage
Page & Stephen Savin
Kim Scala
Jean & Roger Scanlan
Suzanne Schaeffer
Kevin & Caitlin Schafer
Carrie E. Schaffer
Nancy Schauber &
John Simmons
David Scheerer
Noah Schenkman
Joan Scherer
Kimberly Schick
Viola & Bill Schick
Heather & Matthew
Schilling
Rihana Schiro
David & Michelle
Schlesinger
Karen M. Schmidt
Lisa Lacroix Schott
Wendy Schrimp
Nicole & Sarah Ellis
Schroeer
Amanda Schueler
Napa Schwartz
Kate Schwarz
Susan Scofield
Ruth Scotson

Joan & Stephen Scott
Sarah Scott
Scottsville Chapter
United Daughters of
the Confederacy
Betty & Wayne Seiler
Jake and Alison
Selverstone
Maya Seneviratne
Larry Setwell
Betty Sevachko
Patricia H. Severson
Alfred Shackelford
Christie & Michael
Shaps
Mary E. Sharpley
Laura Shavis
Mr. & Mrs. Tom Shaw
Peter Shaw
Susan Shaw
Kay Shean
Colleen Shearer
Valerie Shelley
Missy & Bill Shenkir
Leah M. Sherlock
Betty Sherrod
Carol Sherwood
Donna Shewmake
Anna & Joseph Shields
Julia Lewis Shields
Chelsea Shifflett
Jackie Shifflett
Lois & James Shifflett
Jessica Shifflett
Brenda & Eddie Shifflett
Fay F. Shifflett
Kim Shiflett
Donna L. Shirley
E. Shannon Shirley
Shirley Shotwell
Anita Showers
Joann Shriner
Doris & Curtis Shular
Laurie Shuren
Polly L. Sibert
Lynn Sigman & Greg
Morgoglione
Cindy & Mike Sikorski
Neil R. Silva
Caroline Simeone
Monique Simmons

Barbara & Charles
Simmons
Linda Simonds
Jennifer & Jon Simpson
Sherry Sinard & Margo
De Matteis
Deborah Sinek
SKV Group, LLC
SL Nusbaum
Insurance Agency, Inc.
Savannah Slater
Suzanne Slingluff
Emily Sloan
Robin & Gary Sloan
Glenna Slosson
Lucy & Bryan Slovon
Betty Smallwood
Joyce Smaragdis
Addie Smith
Amy E. Smith
Ann J. Smith
Ami & Bryan Smith
Judy & Robert Smith
Phyllis & Ray Smith
Sheleen Smith
Godric Smith
Cooper Smyth
Ronald & Cheryl Snead
Amy & John Snearer
Chelsi Snow
Devon Snow
Mira Aust
Beth & Baird Snyder
Cindy Snyder & A.T.
Stevens
Jean Snyder
Ruth M. Snyder
James R. Sofka
Emily & Keith Sohr
Anne Carter Somerville
Dorothy & Randall
Somerville
Joan & Jack Sorensen
D.E. & J.M. Sours
Marie & Wayne Sours
Elea Kate Southerland
Cait Southworth
Diane C. Southworth
Marian & Donald
Spano
Christopher Spencer

Ellen Spencer
Niki Spencer
Susanna Spencer &
Bob Gausman
Stuart Speth
Christine Barringer &
John Spina
Loretta Spittle
Maggie Spriggs
Sabrina Springer
Virginia & Sandy
Sprouse
St. James the Apostle
Catholic Church
Anne Stadelmaier
Alan & Helen Staley
Anne & John Staley
Elizabeth Stalfort
Debby & Jason
Stanford
Richard & Courtenay
Stanley
Ruby Stanley
MA Starr
Pam Starsia
Mary, Beth, Amanda,
Miriam
Wendi Steele
Betty & Dick Steiner
Steven Stern
Amy Stevens
Denise & Lance
Stewart
Donna Stewart
Lisa & Tripp Stewart
Neil M. Stewart
Sim & Helen Stidham
Abby Stiffler
Charlie Stiffler
Katie Stiffler
Kathleen & Vincent
Stofan
Merrill & Philip Strange
Rylee Strider
Elizabeth O.
Stubblefield
Ashley Stugard
Everette & Cenie Re
Sturm, III
Marian C. Styles
Chun Su

Emily Sullivan
Sean Summers
Martha A. Susinno
Suzanne & James
Sutherland
Missy Sutton
Suzanne & Marc
Olmsted
Megan & Nathan
Swanson
Maria Sweeney
Nell & Glenn Sweet
Judy & Palmer Sweet
Roxie Sweikar
Kristin Swenson &
Craig I. Slingluff, Jr.
Robert Swierski
Lloyd Swift
Nora S.
Susan O. Tamsett
Joan & David Tanner
John Tansey
Karen Tapscott
Mary Tatum
R.W. Tatum, Jr.
Bethany Taylor
Caroline Taylor
Charles H. Taylor
Heather H. Taylor
Kay Taylor
Michelle Taylor
Vonnice & Todd Taylor
Team ACE
Dr. & Mrs. Paul
Tesoriere
Pamela Tetro
Margery & Charles
Thacker
Debbie Thacker
Barbara & Dave
Thomas
Dorothy M. Thomas
Judy Thomas
Patricia Thomas
Amy Thompson
Ava Thompson
Betty Thompson
Heather Thompson
Jason B. Thompson
Jo Ellen Thornton
Patrick Thornton

Sandra & Jim Thornton
Library/Learning
Commons PLC
Missy Tierney
Catherine Tillack
Barbara Tilley
Anne Timberlake
Bea Timberlake
Melanie Timmerman
Cassidy Tinnell
Pamela & Thomas
Tinsley
Jacqueline J. Tirrell
Ellen & Harris Tobias
Alisande Tombarge
Branka & Danny Tomic
Marta & Ryan Tomic
Susan Towe
JJ Towler
Terry & Harrison
Townes
Anu Townsend
Gary Townsend
Krista Townsend
Deborah A. Triant
Nathaniel and Rachel
Tricker
Linda Trimble
Janice Trogdon
Jennifer A. Trompetter
& Rich Warren
Justin Troutman
Adrian Troy
William Truong
Matthew Tsoy
Beverly & Nelson
Tucker
Sandra & Terry Tucker
Sarah Tudryn
Adrienne Turner &
Steve Johnson
Mickie Turner
Joan Tutan
Kyle and Julia
Umberger
United Way of Greater
Philadelphia & NJ
Barbara Urbanczyk
UVA School of
Continuing &
Professional Studies
Rebecca Van Den

Heuvel & Christopher
Schmitt
Ernetta & Robert Van
Orden
Pamela & Keith
VanDerbeek
Joanna Varrone
Katherine S. Vaughn
Andrea & Charles Vest
Sonja Vicker
Jennifer & John
Vidovich
Ellen & Paul Vieth
Margaret Vincel
Virginia CLE
Aristea Vlavianos
Martin Volaric
Nathan & Rachel
Vrooman
Kathryn Wagamon
Carolyn & William
Wagoner
Sara Wakefield & Josh
Herb
Joyce R. Walker
Pat Walker
Sharon & William
Walker
Martha & J. Gregory
Wall
William P. Wallace
Ernie Walls
Jennifer Walter
Laura Walter
Golde & Paul Walthall
Kelley Walton &
Damon Dabney
Sylvia & Thomas
Walton
Sandra & Roger Walz
Louise & Charles Ward
Mrs. Martha C. Ward
Henry & Debra Warren
Jane Washburn
G. Richard Waterman
Cynthia Watkins
Debra A. Watson
Robin Watson
Melissa & Reid Watts
Waynesboro Exchange
Club
Anne G. Weakley

Cathy Webb
Elise Weber
Lewis Allan Weber
Neva & David Weisman
James Weissman
Maureen Wellen
Karen & Greg Wells
Linda J. Wells
Brian and Jeanine
Werner
Lucille Werner
Lorna & Raymond
Werntz, Jr
Kevin Wesolowski
Beverly L. West
June K. West
Mike & Kelly West
Barbara Westbrook
Mildred & Bob
Westbrook
Marc and Rebecca
Wetherhorn
Sherry Whaley
Jean & Michael
Wheelwright
Betty & Dennis White
Judith L. White
Roxanna White
Beth Whitehouse
Oakley Whitehouse
Michelle Whitlock
Catherine Whittington
Kim Wilder & Ron
Rammelkamp
Melissa & Peter Wiley
Cheryl & James
Wilkerson
Leslie Wilkinson
Christine Willard
Paulette Willard
Becky Williams
Cyane Dandridge
Williams
Ethel Williams
J. Page & Peggy
Williams
Jovan Williams
Linda & Robin Williams
Maria K. Williams
Ruth W. Williams
Craig and Barb
Williamson

Susan & John
Williamson
Cathy & Paul Willis
Lloyd & Margaret Willis
Mary Kaye Willis
Dan & Patti Wilson
Grant Wilson
Michiko Wilson
The Wilson Family
Regenia & Shelton
Wine
Charles M. Winkler
Sandra J. Wisco
Rachel Renfro Wist
John & Mary Beth
Witherell
Catherine Wolner
Martha Wood
Merle Wood
Bianca Woodson
Cody Woodson
Edgar O Woodson, Jr.
Leah Woody
Suzanne S. Word
Varley Wrick
Denna Marie & Glenn
Wright
Joice & Don Wright
J.J. Wright
Janice Wright
Judith Wright
Megan Wright
Sadie G. Wright
Wanda Wright
Katilynn Wyatt
William Wylie
Dan & Betsy Yancey
Dick and Jane Yancey
Amy M. Yates
Keri Yelding*
Teresa Yelton
Elizabeth Yost
Brooke Young
Bob & Donna Vicars
Mary Blair Zakaib
Cassandra Zaleski
Diana & Douglas
Zanzot
Jean A. Zearley
Robin Zimmel
Jinyi Zhang
Catherine Zimmerman

Lisa Zimmerman
Vivian & Don
Zimmerman
Ariel Zwelling &
Alexander Wilson

In Kind

Aaron Watson
Photography
Emily Abel
Kathleen Acevedo
Albemarle Estate at
Trump Winery
Lezli & Bennett Alford
Caitlin Allard
Kevin Allen
Kimberly Allen
Kat Alves
Stacey Anderson
Andrea Shirey
Photography
Anonymus
Arley Cakes
Cheryl Atkinson
Arlene Aveno
Azmi Azmi Azmi
Yousef
Anna & Alexander Baer
Baja Bean
Elizabeth Baker
Hildy Baldwin
Winslow Ballew
Lisa Bamford
Coy Barefoot
Lorie & David Barrett
David Bashline
Jeanna & George
Beker Bellas
Laura Belozerc*
Marie Berman
Carolyn & Stephen
Bernstein
Jeffrey Best
Jane Bielefeld
Sharon & Scott Bishop
Tory Blackford
Buster Blincoe
Blue Ridge AV and
Lighting, LLC
Blue Ridge Cyclery
Anabel Bowen
Melanie Bowyer

THANK YOU FOR YOUR SUPPORT

Galín & Tara Boyd, Jr.
Boylan Heights
Keegan Brads
Lewis Bragg & Sharon Showalter
Brazos Tacos
Tricia Brennan
Pamela Brezinski
Michie Bright
Lisa Brook & Sophia Bain
Nicole Brooks
Greg Brown
Michael Brown
Ronald Brunk
Ellen & Gene Bumgardner
Beth Bunts
Caroline Burns
Burtons Grill of Charlottesville, LLC
Jenny Buzan
Jonathan Cameron
Betty Sue Camper
Fran & William Carden
James Carmichael
Nancy Fisher & Ledford Carpenter, Jr.
Janice & Shelton Cartwright
Sharon & Larry Cavender
Kathleen Chapman
Chaps Ice Cream
Ken Chasin
Kevin Chung
Linda Cirenza
Jessica Clark
Bryan Close
Reed Coda
College H.U.N.K.S
Shana Collier
Deborah Collyer
Anne Colony
Diana Connolly
Greg & Kyle Cooper
Stephanie Corman
Linda Corwin
County Waste
Lindsay Craig
Michael & Karen Crane

Crazy Horse
Dawn Crow
Rebecca Crum
Custom Management Group
Cville Hop On Tours
Erin Dallapiazza, VA
Daughters of Penelope Harmonia Ch. #366
Jessica Daves
Fred Davidson
SM Davis
Ana De Groat
Louise Dehne
James Dell
Deana DeRaimo
Danielle & Daniel Devereux
Pat Deyoung
Susan DiGiacomo
Beverly & Wayne Dinnadge
Patty Dombrowe
Mario & Johannah Dottori
Richard & Kathy Douglas
Bill Doyle
Cindy Dragich
Emily Dreyfus and Neal Walters
Westley Du Pont
Peggy Duncan-Carter
Sally Dunn
Patricia Durrer
Robin Eastham
Alexes Echols
Linda Edenfield
Edmondson Family
Robin Edwards
Cathy & Larry Eichelberger
El Jaripeo Mexican Restaurant
Marilyn Ellinger
Linda Elsey
Sandra Emery
E. Rebeca English
Kendall V. Erb
Erin McDermott
Jewelry
William Eskridge

The Estate of James Hahn
Estate of Margaret Wilkins
Sarah Esterhay
Cheryl Evans
Randy Fama
Cynthia Fargo
Linda Faust
Rebecca Feild
Mitch Feldman
Susan W. Fenn
Babette & Greb Fernandez
Freida Fife
Cynthia Fletcher
Linda Fontaine
Mary Forbes
Karen & Doug Forsman
Clint Foster
Dennis & Lesley Foster
Beth & Charles D. Fox IV
Holly Frasier
Fry's Spring Station
Robert Fulton
Gary Funston
Sylvia & Michael Gage
Frank Gallo
Maggie & Richard Gangloff
Shirley Gardner
Myriah & John Garland
Cheryl Gaughe, Virginia General
Dynamics SRI
Giant Food
Chris Glenn
Luanne Goldrich
Amanda Gomaa
Robin Goodall & Robert Waite, Jr.
Amanda Goodman
John Gormus
Alex & Anne Gould
Lynn Govoruhk
Maureen Graham
Danny Gray
Terry Green
Erik Greenbaum

Greer Elementary School
Sharon Gregory
Janie & Philip Grussing
Stacey Guthiel
Catherine Guy
Jordan Hackworth
Darien & Andrew Hall
Halo Salt Spa
Lynn Auld Hamilton
Shirley Hamm
Frances Hardey
Kimmie Harlow
William S. Harlow
Harvest Moon Catering
Cynthia Hash
Thomas & Sharon Hauff
Joanne Hayden
Marlit Hayslett
Rosemary Heflin
John Heinbokel
Deborah Heller
HemoShear Therapeutics
Heritage Hospitality
Janet Herman & Jeffrey Sitrler
Bruce Herring
Monte & Deborah Hickman
Maureen Hirts
Alice Hodges
Holistic Animal Bodywork & Therapies
Anne & Duane Hopper
Constance Houchens
Tom Hoyt
Karleen Hubley
Susan Hudson
The Hughes Family
Timothy Hughes
Carla & Marshall Hunt
Hal Hurka
Kenneth A. Hutchinson
Mark Ilsemann

George Inge
Bill Irvin
Ivy Provisions
Barb & Steven Janes
Neil Janis
Jean Theory
Lorne Jean
Jenny Jeffress
Jimmy John's
Papa John's
Jeff Johnson
Alice Justice
Janine Kaestner
Eric & Harriet Kaplan
Kristina Karr
Mona Kasra
Joyce Kaswandik
Katherine Soderman & Bryan Anderson
Keller & George Jewelers
Mary & George Kelly
Lorraine Kendrick
Teri Kent
Keswick Hall & Golf Club
Deborah Kidd
Kathryn Kim
Adelaide King
Juliet & John Kingsley
Chris Kirtley
Susan Klug
Ann Kolar
Mike Konopatsky & Judith Minter
Barbara Kramer
Marci Kramer & Daniel Koller
Christopher Kremer
Mike Kroboth
Andrew Krochak
Kelly & Sarah Kyriacopoulos
Marcia LaFleur
Diane Lambert
Cathy Lawder
Ione Lee
Frances Lee-Vandell
Brooke Lehmann
Thomas E. Leland

Stacey Liljegren
Sean Lineweaver
Live Arts
Alex Logan
Joel Lothamer
Patty Luke
Anita Gail Laundry
Emilyann Lyons
Tom Magno
Cynthia Maisannes
Marjolaine Nadeau
Marianella
Marie Bette Cafe &
Bakery
Carol Mariscal
James & Mary
Marshall
Tracy Marshall
Alfonso Martinez
WL & Novella
Mawyer
MaryAnn Mazzola
Lenora & Gregory
McAllister
Carol McCabe
Grier McCain
Carla & Mark
McCardell
Thomas McCormick
Cathryn McCue
Nancy McCue
Amelia McCulley
Theresa & Mark
McCullough
Ava McDonough
Molly McElwee
Alex McGee
Donna McGrath
John McGrath
Gretchen & Michael
McKee
K. McLaughlin
Beth & Ponch
McPhee
Terri Mead
Autumn Meadows
Terri Meeks
Mellow Mushroom
Mezeh Charlottesville
Jacqueline Miller
Lloyd Miller
Lynn and Jan Miller

Joyce Mills
Elizabeth T. Milton
Anna Minutella
Miso Sweet
Stephanie Mitchell
Moe's BBQ
Carl D. Moje
M. Parthenia
Monagan
Monkee's of
Charlottesville
Mono Loco
Kathy Morton
Karen Moulis
Susan & John Mugler
Rebecca Muller
Grace Muro
Kelly Myles
Jessica W. Nagle

Jayme & Derek Naughton
NBC 29
Neroli Spa
Dan Newton
Van H. Nguyen
Nicole Elliott
Photography
Mhia Niederman
Keith Nonnenmacher
Lori Norris
Michael Norton
Blaine Norum
Lindsey Oberg
Trish Ohlschlager
Cynthia K. Olinger
Lucille B. Oliver
Casey Opitz
Louise O'Rourke
Orzo Kitchen & Wine
Bar, Inc.
Karen Oxenham
Leslie Pack
Katherine Parker
Ann & Phillip Parrish
Kristen Pavey
Payne Ross &
Associates
Lois G. Pearcy
Kaki & Ted Pearson
Elizabeth Pennell
Yoshie Perez
Howell W. Perkins

Tim Perrow
Nicole Personette
Pet Supplies Plus
Janice & Steven
Pfund
Pippin Hill Farm &
Vineyard
Lynn Pontillo
Janet & Avrom
Posner
Posture Studio
Pilates
Sherry Prestwich

Pure Barre
Charlottesville
PVCC Brony Club
Elizabeth P. Pyle
Valerie Race
David Rae
Nancy Rae
Susan & Kyle Rannigan
Kaye Rasmussen
Benjamin C. Ray
Darlene Rea
Reddy Ice
Kathryn Reddy
Donna Rehorn
Lynne A. Reigel
Bridget Reiser
Dina & Terance J.
Rephann
George Reynolds
Stephanie & Michael
Reynolds
Melissa Richardson
Melissa L. Riddle
Joan Ripley
Shelley Robbins
Elizabeth Roberts
Jenny Robinson
Rock Paper Scissors
Antonio Rodriguez
Deborah Romano
Debbie Rushing
Cheryl Russell
Robert Ryder
Joshua Sacks
Diana & Jim Salmon
Nate Sander, VA
SCARPA
Dean Schott

Eve & Herman
Schwartz
Joyce Scuffham
Beatrice M. Segal
Jane & John Sellers
Jen Shanks
Nancy J. Sherman
Steve Sherman
Beth Shimman
Erica Shortridge
Signature Medical
Spa
Elaine Silburn
Marcia A. Silvermetz
Sallie & A. Ward Sims
Kathryn Skinner
Sarah Smedley
Jennifer Smith
Michelle Smith
Marguerite Soule
Southern Crescent
Charlotte Gail
Spencer
Sprint Pavilion
Heather St. Armand
Jeanne E.
Stanborough
Todd Starbuck
Kim Starr
Joy & David Steel
Denise Stephens
Loretta Stephens
Taylor Stephens
Rebecca Sterne
Shelly Stinchcomb
Philip and Lori
Strauss
Estate of Courtney
Sugerman
Sun Tan City
Susan & William
Swaine
T&N Printing
Sheila Tate
June Tate
Harry Taylor
Xavier Taylor
Fred Telegdy
The Fitzroy
Polly & Tom
Thompson
Nancy Tisdale

Top Knot Studio
Tractor Supply -
Charlottesville
Tractor Supply -
Ruckersville
Triple C Camp
Anna Troutman
Evelyn & Roy
Trucksess
University of Virginia
Athletics
Department
Harry Van Every
Margaret vanEkeren
Chip Vasi & Cynthia
Orshek
Nancy & Kurt Vetter
Joanne Via
The Virginia Shop
Suzanne Trendel
Faris Wallenborn
Carla Waller
Walmart
Susan Ward
Christopher
Washington
Water St. Restaurant
Sally Watson
Jacqueline Webber
Peggy Wharam
Crystal Whitaker
Leanna Whitmore
Whole Foods Market
Sanford & Janice P.
Wilcox
Mary Ann & Allen
Williams
Roberta Williams
R. Willingham
Rise & Adam Wilson
Mary Wingerd
Andrea Wood
Jeff Wood
Wanda Wood
Charles Woolheater
Sarah Yarney
Amy P. Yates
Yellow Cardinal
Gallery
Michelle Zagardo
Margaret & Richard
Zakin
Victor Zaydfudim



THANKS TO SUPPORTERS LIKE YOU, WE ARE
ABLE TO OFFER A BRIGHTER FUTURE
TO THE ANIMALS WE LOVE!

IN 2016,

2,444

ANIMALS BECAME
PART OF A
LOVING FAMILY