



THE FISCAL YEAR 2017 ANNUAL IMPACT REPORT OF THE CHARLOTTESVILLE-ALBEMARLE SPCA
MEET THE MARCUS MUTTS 2017 CASPCA MASCOTS

MISSION

Advance the compassionate treatment of animals by providing sheltering, medical care and behavioral services for dogs and cats; promoting permanent, caring homes; and furthering education and outreach

VISION

Healthy animals in caring homes

TABLE OF CONTENTS

4 WELCOME	30 EVENTS
6 BOARD & LEADERSHIP	32 FAQs
10 ABOUT US	33 FISCAL
12 SERVICES & OUTREACH	34 PHILANTHROPY
15 RESULTS & STATS	35 ACKNOWLEDGMENTS
18 COMMUNITY	36 THANK YOU
19 YOUTH	
20 VOLUNTEERS & FOSTERS	
24 MEET OUR STAFF	
25 COST OF CARE	
28 SAVE STORIES	

The animals featured on the front and back of the 2017 Annual Report belong to Beth Marcus, who won the "Make Your Pet a Star" auction item at the 2017 Critter Ball.



Zak, the rightmost dog on the front cover and the star of the back cover, was Beth's first foster fail, but he certainly wouldn't be her last!

In 2006, Beth Marcus started volunteering at the Charlottesville-Albemarle SPCA. She started by helping out as needed and even put in the trails and fencing around the shelter in memory of her late husband, Ron Marcus. A love of animals had always been important to the couple. When he passed, they had five rescue dogs that had been adopted from the CASPCA's old facility.

Soon after she started volunteering, Beth learned that fostering was an essential component of a No Kill community. And Beth thought that giving homeless animals a place to have extra care and love sounded like the perfect way to honor her husband's memory. So she opened up her home and heart to animals and gave them a chance for a better life. Since Beth started fostering, she has changed the lives of over 240 animals. A lucky few have been able to transition from foster to forever pet. Zak was eventually joined by Zippy, Della, Peanut, B.B. and Booger. But the fosters that have left Beth's home moved on to new families and new adventures, ready to start successful lives after spending a little time learning what it means to be loved again.



WELCOME!

I'm incredibly proud of this organization for leading the way in animal welfare. Since 2006, we have maintained our No Kill commitment and improved our life-saving strategies.

- We've spayed/neutered over 65,000 animals to reduce pet overpopulation.
- More than 36,000 animals have found loving homes since 2006.
- In 2017 we had a 95% live release rate.

But we know that we can always improve to save more lives. One of my goals in becoming Executive Director is for the CASPCA to be a national leader in helping other shelters realize the same life-saving success we've achieved. In 2016, thanks to a challenge grant by the Perry Foundation and our generous community, we raised the money for our Compassionate Care-A-Van. The Care-A-Van arrived at our shelter in June 2017 and has proven to be a game changer in helping us save animals, from transporting them from Louisa County on a weekly basis to all the way from Houston and Atlanta; it's proving to be one of the smartest investments in saving lives that we've made. We've opened our doors to over 1,000 animals faced with euthanasia due



to overcrowded shelters and welcomed dogs as far away as South Korea faced with cruel deaths since I became the Executive Director on August 1, 2017. This was achieved by having a dedicated staff, volunteers and a supportive community who fostered, adopted and/or provided the necessary financial resources.

In addition to saving animals from other shelters faced with unnecessary euthanasia, I believe that keeping animals in their homes is an important component of lifesaving. I want to continue focusing on lifesaving work as well as strengthening our pet retention efforts. Pet retention initiatives are essential to keeping pets in their homes and out of shelters. Many people surrender their pets due to a lack of financial resources needed to address medical or behavior issues. Currently, we offer quarterly Compassionate Care Clinics, which include a wellness exam, pet-care education, general vaccinations and routine wellness care at reduced fees

for low-income pet owners on public assistance in our community. The goal is to increase these clinics to help responsible pet owners keep their pets, even if they simply aren't able to afford everything their pet needs. In 2017, 171 animals were served at our Compassionate Care Clinics. By providing medical care to pets in our community, we keep them out of the shelter and with their loving families. We are also able to serve our community by helping with behavior issues.

The Better Behavior for a Better Tomorrow Fund is new this year in an effort to increase pet retention. This initiative enables the CASPCA to provide behavior support for animals that need the expertise of trainers or behaviorists. We give animals and, ultimately, their new families the tools to develop lifelong relationships.



We believe the shy, fearful and anxious animals that come to us deserve the same chance at a happy home as any other pet.

In a home, or waiting for a home, the unconditional love we receive from animals is awe-inspiring. They give us so much, whether it's a silent but supportive, accepting companion, a walking partner or a snuggle buddy, and ask for so little in return. They are truly members of our family. At the CASPCA we care for every cat and dog brought to us — none are turned away. Your generous contributions go toward critical care for a dog struck by a car, or a cat in need of an operation, or toward finding the best possible homes for the many wonderful animals we care for. You can rest assured that your contributions are literally lifesavers!

We are only as strong as the community we serve, and that's why we are grateful to all of you for your shared commitment to making this world a better place for our many animal friends. By helping others save lives and keeping animals in loving homes, the CASPCA is ready to take No Kill to the next level. Thank you for all that you do to allow us to do this lifesaving work.

Sincerely,

Angie Gunter

BOARD OF DIRECTORS

Suzanne Owen
Chair

Mark Sackson
Vice Chair

Lisa Ross Moorefield
Secretary

Gina Bayes
Treasurer

Jenn Corbey
Kay Cross
Erin Davis, DVM
Ethel deNeveu
Tom Fitch
Connie Kapp
Measi Kober
Sarah Krenn
Beth Marcus
Elizabeth Morris
Phil Shiflett
Frank Squillace
Blair Williamson



STAFF LEADERSHIP

Angie Gunter
Executive Director

Heather Sullivan
Director of Operations

Kristen Scheller, DVM
Director of Veterinary Services

Moriah Good
Director of Advancement





CHUNK & CASSIDY

It was love at first sight for Cassidy, Preston and Chunk.

When Cassidy came across Chunk's photos and video, she knew he was the one. She loved that despite surviving Hurricane Harvey and arriving at the CASPCA with ringworm infection and heartworms, Chunk smiles from ear to ear and his tail is always wagging.

Chunk had been sent to a board-and-train facility to work on his socialization skills with other dogs. Cassidy and Preston came to meet him, and Chunk knew right away that he had found his family. When Preston first met Chunk, he knelt down and clapped his hands on his thighs. Chunk quickly put his two front paws on Preston's legs. The two of them immediately started playing and wrestling on the ground. Preston was laughing and giggling, and Chunk's tail was wagging!

Since the day they brought Chunk home, he settled right in. Although they have worked through a lot of his initial insecurities, Chunk still loves to be everywhere they are (including

underfoot)! From pressing a little black nose on the glass shower door to in the backseat of the car picking up groceries ... Chunk wants to be part of it all!

When Cassidy and Preston first adopted Chunk, they couldn't have imagined he'd be swimming at the lake with them and socializing with other dogs, but he is, and he loves it! They're his people, and he knows that. As Cassidy says, "Trust and love can change everything!"



ABOUT US

Founded in 1914 after unofficially operating out of the basements and garages of concerned citizens since the early 1900s, the Charlottesville-Albemarle SPCA (CASPCA) has come a long way. In 1955, the CASPCA acquired eight acres of land with a chicken coop, which, with some conversion and remodeling, became the first animal shelter in the region. Over the next 40 years, the shelter building was never remodeled and became a hazard. In the late 1990s, it no longer met state building code requirements and was on the verge of being shut down.



Planning for a new facility began in 2000. In 2004, after a community-wide capital campaign, the CASPCA moved into its current facility. The current home is a 32,000-square-foot building on a six-acre campus, which houses one-third more animals than the former facility and contains a veterinary surgical suite.

The improvements to the facility and a commitment to saving lives allowed the CASPCA to increase the number of animals treated and placed in foster care. The CASPCA was better able to treat and find homes for many sick and injured dogs and cats as well as older, blind or deaf animals, or those with “special needs.”

The CASPCA proudly celebrated 10 years of being a No Kill Community in 2016. Looking into the future, we knew it was time to expand our lifesaving efforts to pets living outside of the shelter’s walls. Our vision for a mobile unit became a reality thanks to a \$73,500 challenge grant from the Perry Foundation and our generous community of supporters. The Compassionate Care-A-Van made it possible for the CASPCA to travel for rescue missions near and far in 2017. Days after Hurricane Harvey wrought the most destructive natural disaster in over a decade upon Texas and neighboring states, a team of CASPCA staff traveled to BARC, the city of Houston’s only municipal animal shelter, to transport 70 aban-



donated animals back to the CASPCA for veterinary care and adoption. The rescue mission enabled BARC to make room for animals displaced by Hurricane Harvey.

Less than a week later, the CASPCA partnered with Best Friends Animal Society to help clear the shelter at Fulton County Animal Services, Atlanta's local pound. The Compassionate Care-A-Van headed south and safely transported nearly 50 homeless animals back to the CASPCA, helping Lifeline Animal Project make room for hurricane-displaced animals.

A few weeks later, CASPCA took in 25 additional animals from Houston. These

animals were the most medically challenged, hard-to-place animals that had been living in an arena in Houston after Hurricane Harvey. They were ringworm and heartworm positive and required a month long quarantine period.

The CASPCA made rescue missions in surrounding counties as well, transporting animals from hoarding cases and from overcrowded shelters where the animals were in danger of being euthanized. A total of 226 animals were transferred in from Virginia shelters to the CASPCA in 2017.

The CASPCA is fortunate to have the resources and ability to help animals in need in our region and nation. Without the Compassionate Care-A-Van, an amazingly dedicated foster family network and a very generous and supportive community, the rescue missions would not be possible!

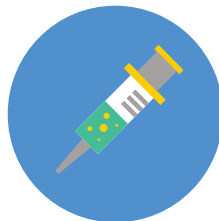


SERVICES & OUTREACH



SPAY/NEUTER

Spaying and neutering your pets helps prevent additional unwanted litters in our community. Schedule your animal today.



RABIES VACCINATIONS

Prevent your pet from contracting this fatal disease. Clinics are held on the first Sunday of every month from 12-4PM.



SURRENDER YOUR PET

Before surrendering your pet, explore every other alternative first. Pets are a lifetime commitment.



LOST/FOUND

Reclaim a lost pet if it has strayed and found its way to us. Please call us as soon as you realize your pet is missing and file a lost animal report.



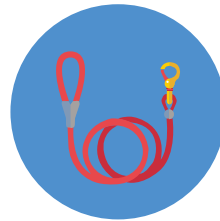
SUMMER CAMPS

Camps consist of animal-related activities, animal interactions, visits from special guests, fun animal-themed crafts and more.



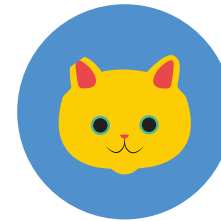
PET THERAPY

Therapy teams brighten days at care facilities, nursing homes and children's programs.



OBEDIENCE TRAINING

Using clicker training, our group classes teach skills to dogs and their people for real-life situations. Register online.



COMMUNITY CATS

We offer free spay/neuter services for community cats living in Albemarle County and Charlottesville.



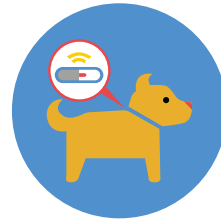
COMPASSIONATE CARE CLINICS

Clinics provide a wellness exam, pet care education, rabies vaccines and routine wellness care at reduced fees.



CITY/COUNTY LICENSES

We sell county and city dog licenses. Proof of a current rabies vaccination is all you need to bring with you.



MICROCHIP CLINICS

Reuniting lost pets with their owners is an important part of our mission. Clinics are held on the first Sunday of every month from 12-4PM.



CREMATION SERVICES

With compassionate hearts, the staff at the CASPCA will take your deceased companion and treat your pet with the utmost respect.



HUMANE EDUCATION

We teach principles of respect for all forms of life and believe encouraging the spirit of kindness toward animals is the starting point for empathy in kids.



BIRTHDAY PARTIES

Let us make your birthday bash memorable with a shelter tour, fun games and real "party animals."



— “ —

*The unconditional
love we receive from
animals is
awe-inspiring.*

— ” —

2017 RESULTS & STATS

317,033

WEBSITE VISITORS

3,622

GENEROUS DONORS

300

PET THERAPY VISITS

206,650

PET MEALS SERVED

2,560

PETS ADOPTED

183

LIFESAVING SURGERIES

19,316

EMAIL SUBSCRIBERS

1,833

OF TIMES ANIMALS
ENTERED FOSTER CARE

133

CASPCA CAMPERS

20,724

FACEBOOK LIKES

594

VOLUNTEERS GAVE
MORE THAN 28,000
HOURS

95%

LIVE RELEASE RATE

38

EDUCATIONAL VISITS
AND TOURS

423

CHILDREN ATTENDED
BIRTHDAY PARTIES

556

LOST PETS REUNITED
WITH THEIR OWNERS

81

JUNIOR VOLUNTEERS GAVE
MORE THAN 1,000 HOURS

Since the CASPCA became No Kill:

MORE THAN

65,000

SPAY/NEUTER
SURGERIES

NEARLY

36,000

ANIMALS ADOPTED
INTO LOVING
HOMES

MORE THAN

7,000

PETS REUNITED
WITH THEIR
OWNERS

NEARLY

15,000

ANIMALS
MICROCHIPPED

ALVA & MARTHA

Martha had just graduated from high school and moved to Charlottesville. She didn't know anyone and was looking for a companion. She had been planning to adopt a cat for her birthday, but broke down and came to the CASPCA eight months early.

Martha was immediately drawn to a senior cat alone in a cage in the lobby. Alva had been living in the shelter for 10 months when Martha came into her life. She was isolated in a lobby cage because she didn't get along with other cats and came down with frequent upper respiratory infections from the stress of the shelter. Alva struggled to maintain her weight and a healthy coat. Martha had to have her!

Alva became Martha's somebody. Somebody to watch Netflix with, somebody to travel with. Despite being a little shy about new people in the home, Alva helped Martha make friends. Martha held a birthday party for Alva and invited people over to celebrate her special senior.

Now Alva has a soft, shiny coat of fur, a healthy appetite and hasn't been sick once since she's gone home. Martha says, "I wanted to share her story because I feel that it shows the benefits of a fur-ever home for both the pet and the adopter. I hope all animals out there can find their fur-ever home, too!"





COMMUNITY

Rummage sales to benefit the homeless animals in the care of the CASPCA have been around for a long time. The first Rummage sale took place in 1940 and raised \$40. For more than six decades, the six-week-long annual sales continued to grow in popularity, raising more and more funds necessary for the care of the CASPCA animals. The 2005 sale brought in more than \$200,000, and in 2007 a coalition of board members and staff opened the first brick-and-mortar SPCA Rummage Store on Preston Avenue. The 2016 move to a larger commercial space at 364 Hillsdale Drive in Seminole Square



Shopping Center has allowed staff to accept more items due to an expanded area for the sorting and organizing of donations. The new store offers ample space for the popular boutique and an improved book section. A larger shoe area allows for footwear to be organized by size, and shoppers can enjoy the ease of finding plenty of parking spaces in the shopping center lot.

A new sales system was implemented, allowing items to be reduced on a monthly basis to ensure old items move. More room means new merchandise added more often. So there's always a reason to stop by the SPCA Rummage Store and support the CASPCA!



YOUTH



We believe that encouraging the spirit of kindness toward animals can be the starting point for the development of empathy in youngsters. The CASPCA encourages the next generation of animal lovers with our popular humane education program, including camps, birthday parties and educational tours and visits.

SUMMER CAMP

In 2017, the CASPCA offered summer camp for rising third-through sixth-graders. During these week-long sessions,

camp counselors and guest speakers taught students about the importance of treating animals with respect and compassion by engaging in crafts, educational activities and interactions with shelter animals.

ART CAMP

This camp for youth helped campers learn empathy and compassion for animals while giving them experience in team-building exercises and collaborative projects. Campers learned about animal welfare and created art for display at the CASPCA. This camp was made possible with support from the Bama Works Fund of Dave Matthews Band as well as other generous donors, allowing us to provide campers with free meals, transportation and supplies.





VOLUNTEERS & FOSTERS



Featured here are just a few of the incredibly dedicated volunteers who are an integral part of the CASPCA family. Our volunteers assist with everything, including dog walking, socializing cats, greeting visitors, fundraising, assisting at adoption events and cleaning. Hundreds of animals receive a second chance thanks to the love and compassion of



THANK
YOU!



our many foster families. Fosters offer animals nurturing and feeding when very young, socialization, training, a break from the shelter and time to recover and heal after surgery.





SAM-I-AM

True love is worth the wait.

Sam-I-Am hadn't had the best luck. He was in and out of the shelter multiple times, just never finding the right home. Sam-I-Am had been waiting for a home for 237 days when he finally became a lucky dog. Dustin and Michelle walked through the doors of the CASPCA with four kids and changed Sam-I-Am's life.

They all met Sam-I-Am, and he was in love. While he lay on the floor, the boys and girls kissed him, hugged him and whispered sweet things in his ears. Sam-I-Am loved it! But was it too good to be true?

The family took him home for a foster trial, and everyone at the shelter waited impatiently to hear what the decision would be. Sam-I-Am cuddled up to Dustin a lot at first, but what really sealed the deal was Sam-I-Am bonding with their little girl, Caroline. The pair were inseparable!

His family told us that Sam-I-Am is the sweetest dog they've ever met, very loving and affectionate. He's a silly nut,

but a good boy! Sam-I-Am is having a great time in his new home. His name tag says "Troublemaker," and he always has someone who's ready to get in trouble with him! Sam-I-Am had to wait for it, but he finally found the loving home he deserves.





MEET OUR STAFF

The CASPCA's talented and diverse group of over 70 employees all share the same passion, dedication and commitment to helping the thousands of animals who walk through our doors each year. With over 30 different positions, the staff members work tirelessly as part of a team, all with the shared goal of improving the lives of animals. Jobs range from caring for each animal's needs and finding them loving homes to working

at the shelter's thrift store to organizing fundraisers that support the many lifesaving programs at the CASPCA.

Each person plays such an important role in serving our community's pets and our organization's mission. Working with animals is a dream job, but animal welfare is also a very challenging and emotional industry. Staff work long days; the work is hard and dirty; tears of joy and sadness are shed; but performing lifesaving work is one of the most rewarding aspects. Helping animals' wounds heal, both physically and emotionally, and seeing them run into the arms of their new adopters make us want to work that much harder.



COST OF CARE

COST OF SPAY/NEUTER:

CATS \$50/DOGS \$65

DAILY COST OF CARE

FOR ONE HEALTHY ANIMAL:
\$25

COST OF VET CARE

PER ANIMAL ON ADMISSION:
\$45

LOUIE & SPIKE

Double the trouble, double the fun! Isabel and Chip have a house full of animals, but the two brother cats rule the roost! Spike and Louie are affectionately called “Les Boys D’Lorange”. Their beautiful orange tabby coats certainly are striking, but their paws can be, too! Duke the dog gets picked on fairly often, but only because he keeps trying to make friends. Violet the dog knows better and just minds her own business.

But Spike and Louie love each other more than anything. They cuddle, come up with schemes and basically do whatever they want— which can often include giving affection to their humans. They’re pretty happy to have a kid in the house to get rubs from any time they want!

Isabel and Chip chose to adopt two adult cats at the same time and wouldn’t change a thing. Even though they’re brothers, the boys have very different personalities. Spike is outgoing and friendly. Louie is more reserved and shy. One thing they have in common is how much they love each other. And how much they love food! Spike and Louie are always together and can’t stand to be apart for very long. Their bond is truly heartwarming and brings joy to the entire family.





VET SAVE STORIES

COST:
\$1,000



CONDITION: Coachella was found as a kitten and surrendered to the CASPCA. The finder fostered her after we checked Coachella's health. While in foster, she developed dangerously low glucose and was brought back for emergency treatment. The clinic staff administered intravenous dextrose, and she pulled through. Three months later, she developed a mass in her middle ear.

TREATMENT: Coachella underwent an advanced surgical procedure called a ventral bulla osteotomy (VBO) to remove the mass. We are fortunate at the CASPCA to be able to perform this difficult procedure in the shelter clinic.

TODAY: Coachella was adopted by her foster family, who have gone through several different names for her. She started as "El Diablo" because she was such a tiny terror, but now she's loving to all her humans and her dog. Her family says that they started calling her "Itty Bitty," but her official name is "Isabelle Tilt-a-Whirl Pringles."

COST:
\$2,500



CONDITION: Cinnabar arrived at the CASPCA with nursing kittens and a severe upper respiratory infection. In addition, she had severe dental disease, with a very large amount of painful inflammation and infection in her mouth.

TREATMENT: Cinnabar required intensive treatment in the shelter clinic. She underwent two dental surgeries and was maintained on intravenous medications. Due to the large amount of pain in her mouth, combined with the congestion from the upper respiratory tract infection, she required careful nursing care to get her to begin eating again. **TODAY:** Cinnabar, now Czarina, is described by her loving father as "a wonderful cat" and recently received a clean bill of health. She spends her days in a picture window, keeping an eye on squirrels, birds and other cats. Czarina also makes it difficult for her owners to read books and newspapers, as she likes to interrupt for petting!

COST:
\$600



CONDITION: Before coming to the CASPCA, Rufus was hit by a car on two separate occasions. He sustained multiple injuries, including two jaw fractures and a pelvic injury. By the time he was brought to the shelter, he had a severe infection in his mouth, and he was dehydrated and underweight. **TREATMENT:** Rufus required immediate treatment due to pain, infection and dehydration. After we made him more comfortable, he began to eat very well. After a couple days of supportive care, he was placed under general anesthesia, and his jaw fracture was repaired with a wire. **TODAY:** Rufus has made a complete recovery and has settled very nicely into life with the loving family that adopted him. He was a sixth birthday present in 2017 for his human sibling Charlie! Even though he has his own water bowl, Rufus prefers to drink from the bowl of his dog sibling, Bandit.

COST:
\$250



CONDITION: The veterinary assistants noticed something was wrong with Layla when they observed her experiencing pain when defecating. The staff veterinarians diagnosed Layla with perianal fistulas. **TREATMENT:** Perianal fistulas are an immune-mediated condition leading to ulceration and extreme pain around the anus. A prescription diet and special medication is required for treatment. The medication was ordered, and Layla was observed closely as treatment was started to ensure she was on the correct dosage. She responded beautifully and was cleared for adoption while continuing treatment. **TODAY:** Layla, now Ginger, is doing very well in her loving home. She likes both of her parents, but is a bit partial to her mama, who was the one who rescued her from the shelter after seeing her online. She is very gentle with the two-and three-year-old grandchildren that visit her and is described as a “perfect fit for the home.”

COST:
\$500



CONDITION: Banner arrived at the CASPCA in terrible condition— a portion of his left forelimb was missing. Bones and soft tissue were exposed and he had sustained significant trauma. His right forelimb was also abnormal; he had a healed fracture in this limb. Banner was a little unstable and would occasionally fall over on his chest. However, he had a great personality, and he would always get right back up and try to play again after falling. **TREATMENT:** Banner’s injured left leg was bandaged, and he was started on medication. The staff veterinarians consulted with a board-certified veterinary surgeon, and the decision was made to amputate the injured left leg. Banner underwent the amputation surgery at the CASPCA, and despite his abnormal right limb, recovered well. **TODAY:** Banner has a great home and loves playing with his dog sibling. He has never let missing a limb slow him down!

COST:
\$1,100



CONDITION: Harley had fleas, a skin infection and was underweight. Her most concerning problem was entropion. Entropion is an abnormality in which the eyelids roll in, causing pain as the eyelids and eyelashes rub against the cornea (surface of the eye). Harley had such severe entropion that she was barely able to open either of her eyes. **TREATMENT:** Harley underwent three surgical procedures to correct the entropion. She was also treated for the flea infestation and skin infection. While Harley’s eyes weren’t completely normal after surgery, the pain was gone, and she was able to keep them open. Harley also gained over 10 pounds. **TODAY:** Harley was adopted by her foster family, who love her. Harley has never met a stranger and wants to get to know anyone she meets. According to her mother, she’s a “perfect sweetheart” and “her favorite pastimes are cuddling and sleeping.”

EVENTS



BOW-WOW-WALK

On April 8, 2017, more than 400 walkers with their adorable dogs took to the streets of Charlottesville to support the CASPCA. Participants enjoyed human and doggie entertainment, canine competitions, treats for humans and pups, and a pack of animal-friendly

sponsors. The Fourth Annual bow-WOW-walk generated nearly \$72,000 to benefit the animals at the CASPCA, which was more than \$10,000 over our goal! Team Natural Pet Essentials led the pack with over \$10,000 raised. The K-9 2.5K was a huge success thanks to our supportive community!

CRITTER BALL

The 2017 Critter Ball on September 21, 2017, was the most successful to date for the Charlottesville-Albemarle SPCA, raising over \$345,000 in net proceeds to benefit the animals at the shelter! Party guests mingled with adoptable dogs and toured the Compassionate Care-A-Van during cocktail hour. After a delicious dinner, the incredible live auction featured exciting packages and key initiatives, including our Compassionate Care-A-Van, Critter Camp, Rescue Fund and Spay/Neuter appeals. To top off the night, guests grooved to Motown performers Kustom Made, and a \$3,500 gift card to Schwarzschild Keller & George Jewelers was raffled to a lucky winner!

THE 2017 CRITTER BALL... WAS
THE MOST SUCCESSFUL TO
DATE!



FAQS

? IS THE CASPCA AFFILIATED WITH ANY NATIONAL ANIMAL WELFARE ORGANIZATIONS?

Like most local animal shelters, the CASPCA receives no ongoing funding from the ASPCA or the Humane Society of the United States. If you want to help the animals in your community, give to your local community shelter or animal welfare group.

? WHAT IS THE CASPCA'S POLICY WHEN ACCEPTING PETS?

Our doors are wide open to dogs and cats from Albemarle County and the City of Charlottesville, regardless of age or health.

? THE CASPCA IS A NO KILL ORGANIZATION. WHAT DOES THAT MEAN?

We are committed to saving all healthy and treatable animals in our care, regardless of how long they've been with us. We are a progressive, solution-oriented, animal welfare organization dedicated to saving lives.

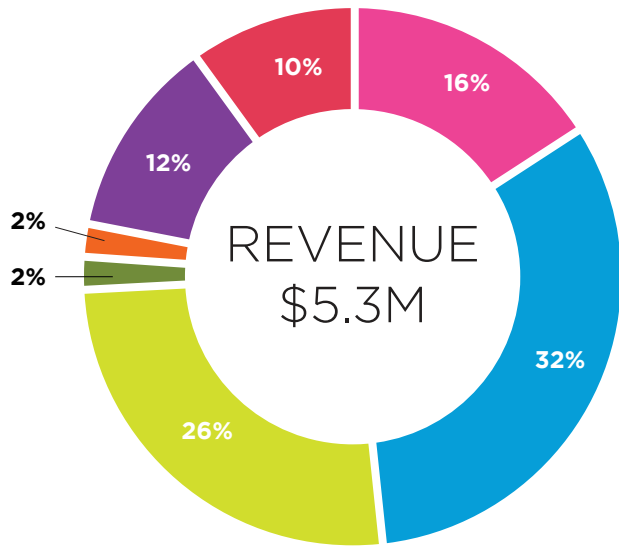
? WHAT IS THE CASPCA'S ANNUAL LIVE RELEASE RATE?

We collect and report our shelter statistics using a nationally recognized data matrix called the Asilomar Accords. We track and compare our progress through our Annual Live Release Rate, which is the data of live outcomes for all cats and dogs that leave our care. In 2017, we were proud to achieve a Live Release Rate of 95%.

? IS THE CASPCA A POUND OR SPCA?

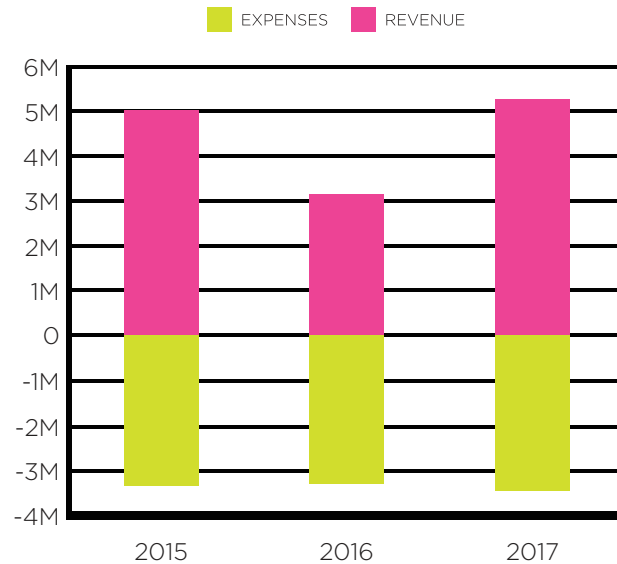
The CASPCA is defined by VA Code as a "private animal shelter" whose purpose is finding permanent adoptive homes for animals. We also serve as the contracted "public animal shelter" for Albemarle County and the City of Charlottesville to impound or shelter seized, stray, homeless, abandoned, unwanted or surrendered animals. We are under contract and receive funding to serve as the city and county pound.

FISCAL



- 2%** Investment Income..... \$ 126,323
- 2%** Grant Income..... \$84,613
- 10%** Rummage Store..... \$533,689
- 12%** Products & Services..... \$635,283
- 16%** City & County..... \$ 828,017
- 26%** Donations/Public Support..... \$1,372,954
- 32%** Bequests..... \$1,726,626

100.00% Total Revenue..... \$5,307,505



2015 Expenses: \$3,349,987

2016 Expenses: \$3,307,095

2017 Total Revenue: \$5,307,505

2017 Total Expenses..... \$3,457,844

BEQUESTS

\$1,726,626 included in total revenue in donations & public support.

PHILANTHROPY

**3,622 GENEROUS DONORS
SUPPORTED OUR ANIMALS IN 2017**

The CASPCA relies on donations to purchase much-needed equipment, hire top-notch staff and provide crucial programs and services to the community. All the work we do would not be possible without the various forms of giving we receive. Ways you can give include donating to our Rummage Store, making a monthly recurring gift, giving in memory/honor of a pet or person, or even just offering a general contribution. You can also sponsor a pet, adopt a kennel or purchase one of our memorial bricks. Whichever way you have offered support in the past or choose to contribute in the future, we thank you and value your gift, as do the many animals helped every day at the CASPCA.



LEGACY GIVING

One of the most crucial gifts we receive is a legacy gift— a planned gift that costs donors nothing now, but will provide essential support to the CASPCA and its programs for years to come. In 2017, legacy gifts made up 61 percent of our total donations and were vital to our operations, enabling the highest standard of care for thousands of animals in need. There are many ways you can ensure your legacy at the CASPCA. You can choose to name us in your will or to bequeath to us a portion of your estate. You can give in the form of stocks, bonds or property, or you can arrange a gift annuity, a trust or the transfer of unneeded life insurance. Please contact us today to learn more about these forms of giving.

ACKNOWLEDGMENTS



Virginia National Bank's ongoing support as a CASPCA "Pawtner" has enabled us to expand our reach in the community..



Thank you, Pawtner.

Virginia National Bank's ongoing support as a CASPCA "Pawtner" has enabled us to expand our reach in the community, funding key programs and helping us maintain our No Kill mission. Through the Pawtner Program, businesses and organizations support the lifesaving work at the CASPCA while being recognized as key leaders in our community. Pawtners receive special recognition throughout the year on our website, in our newsletters and in signage at our facility, reaching thousands every year.



Contact us today to find out more about how your business or organization can increase its visibility while helping thousands of animals in need throughout our community.

Photography by:
Rob Garland
Susan Kalergis
Miette Michie
Jen Skipper
Marilynn Sting
Aaron Watson

THANK YOU FOR YOUR SUPPORT

ESTATES & BEQUESTS

Catherine Garvey Trust
Estate of Joan Barry
Estate of Gene Barnes
Estate of Harriett B. Lewin
Estate of Shannon Douglass Lientz III
Estate of Virginia Popoff
Estate of Elizabeth W. Purcell
Estate of Priscilla S. Randolph
Estate of Carla A. Sykes

\$25,000 & UP

Agnes M. Fotta Trust
Anonymous
August Heid Trust
Best Friends Animal Society
Commonwealth of Virginia Campaign
Becky & Jim Craig
Virginia National Bank

\$10,000-\$24,999

BMW of Charlottesville/
Crown Automotive
Parke & Coran Capshaw
Vicky Castegren
Mary & Michael Chinn
Earl D. & Marian N. Olson
Fund
J. Kaye Halsey MD Memorial
Fund
Joanne M. Phillips Trust
Beth Marcus
The Mary Helen Jessup Trust
Kathy Murphy & Bob Enslow
Oakwood Foundation
Red Light Management
Susan D. Wells Sargeant
Thomas C. & Mary Ann Hays
Family Charitable Trust
Carol Ann Tomlinson
The William Dean Charitable
Foundation, Bank of
America, N.A., Trustee

\$5,000-\$9,999

Animal Wellness Center
Anonymous
Bama Works Fund of Dave
Matthews Band
Becky Barlow
Virginia & Ronnie Bayes
Jennifer & Brian Corbey
Crossroads Animal Hospital
Crutchfield
Darrell & King Investment
Counsel
Erin Davis & Chris Coffing
Sharon Donovan
Janet & J. Gray Ferguson
Freestyle
Greenbrier Emergency
Animal Hospital
Jumper Family Foundation
Connie & Jason Kapp
Claudia & Rich Lawson
Elizabeth & Gregory Morris
Jennifer Hays Morris
Natural Pet Essentials
Neroli Spa & Beauty Lounge
Perry Foundation, Inc.
Lisa Ross & Robert
Moorefield
Jean & Douglas Salter
Standish Family Foundation
Fund
Mary Walter & George Yin
The Whitney & Anne Stone
Foundation
Anne & Tom Wild
Virginia Veterinary
Specialists

\$1,000-\$4,999

ACAC Fitness & Wellness
Centers
Kevin Allen
Allison Partners
Debra & Philip Ambrosini
Andrew and Kelli Block
Family Fund
Lynn and Dean Andrews
Animal Farm Foundation, Inc.

The Anna and Kirven
Brantley Charitable Fund
Anonymous
Arnold F. Baggins
Foundation
Rhea & John Baldino
The Bane Foundation
Carol Bauer
Benevity Community Impact
Fund
Ben & Helga Bennett
Carolyn & Martin Betts
Nelson E. & Mary S. Bickers
Janet & Gene Bolla
Bernard T. Bress
A. Cary Brown & Steven E.
Epstein
Amanda & Mark Brown
Faye M. Brown
Brown College, UVA
Bushman Dreyfus Architects
Thomas A. Caldwell
Thomas & Carmen Carver
The Charles Fund, Inc.
Charlottesville Parking
Center, Inc.
Chevron Matching Employee
Funds
Julie Coiner
Combined Federal Campaign
Lori Connolly
County of Albemarle
Mary Laub Cowan
Jan & Michael Cabbage
Cynthia Tremblay
Foundation, Inc.
Kathleen & William Daggett,
Jr.
Sandra & Alfonso Damico
Delta Chapter of Alpha Tau
Omega Fraternity
Delta Upsilon Fraternity
Ethel & Larry deNeveu
Dorothea D. Nelson
Charitable Lead Annuity
Trust
Patricia Egbert
Richard Ergler
Jeffrey B. Ferrill
Jane H. Fink
Phillip Flavin

Jim Snead Ford
Kathryn Michelle & Hans
Foss
Carole & Keith Frazee
Brian J. Gallagher
Claire W. Gargalli
GE Foundation
Terry Grant
Angie Gunter
Elaine Hadden & Douglas
Drysdale
Hantzmon Wiebel, LLP
Lisa & Dan Heuchert
Barbara & Michael Higgins
Anne Hooff
Elizabeth Hyatt
Jefferson Theater
Productions LLC
Emily Kelly
Henry W. Keyser, Jr
Daria Kiselica
Wanda & Anil Kochhar
Kroger
Mike Layfield
L.E.A.W. Family Foundation,
Inc
J. C. Leonard
Susan & Thomas Likowski
Moira MacAvoy
Kelley MacDougall & Michael
Pausic
Madwoman Project
Manchester Capital
Management
Manning Family Foundation
Shannon & Ryan McCall
McDonald's
Jenny Mead
Merck Animal Health
Miette & George Michie
Mid Atlantic Car Wash
Technology, Inc.
Erica & Jim Millner
Douglas Montgomery
Dahne & Chip Morgan
Jessica W. Nagle
Network For Good
Marilee & Paul Newman
Orange Tree Foundation
OSI Restaurant Partners LLC
Hunter Palmer

Pampered Pets
Pawprints Boutique
Shelley & George Payne
Jan Madeleine Paynter
Judy & Charles Perkins, III
Perrigo Company Charitable
Foundation
Pet Express Mobile Dog
Grooming
Petfinder Foundation
William & Mary Ann Petri, Jr.
PetSmart Charities, Inc.
Dina Poma-Barnes
Prewitt & Valerie Semmes
Foundation
Quantitative Investment
Management Fund
Raising Canes Chicken
Fingers
Charlotte Rea
Joyce Roberts
Sally S. Rogers
Ronald E. Gareis Charitable
Fund
The Rosenstiel Foundation
Gail & Steven Rubin
Demi Runkle
Glenn Rust
S. L. Williamson Company,
Inc.
Karen Reid Sansom
Renee Savage & Glenn
Doggett
Sara Graney Schroeder &
Fred Schroeder
Teresa & Keith Shaner
Richard P. Shannon
Rachel & Andy Shelden
Ann & Phil Shiflett
Nancy & Richard Smith
Vicki & James Snead
Catherine Wray & Timothy
Snider
Starr Hill - Red Light Fund
State Farm Companies
Foundation
Stephen K. Stearns
Steele Family Foundation
Sterba Family Fund
Sumner Gerard Foundation
Marion & David Szewo

Kerri Taylor
 Phyllis & Philip Tenney
 Barbara Millar & Peter
 Thompson
 Cheryl & Thomas Thorpe
 Claire M. Tieder
 Ting Internet
 Monika Tomlinson
 James Trenz
 George & Martha Truxel
 Will van der Linde
 Vaughan W. Brown Family
 Foundation
 Malathi Veeraraghavan &
 Shrikant Ramamurthy
 Wells Fargo
 Ceil & Kenneth Wheeler, Jr.
 Lonni & David White
 Whitewoods Charitable
 Foundation
 William M. Camp Foundation
 Elizabeth Wooten
 Wrightson Ramsing
 Foundation
 Zoom Indoor Cycling

\$250-\$999

Thomas & Elizabeth Allan
 Chris & Rebecca Allison
 Beverly Almond
 AmazonSmile Org Central
 Ancestry Pet Food
 The Animal Connection,
 Natural Pet Store
 Anonymous
 Patricia & William Apperson,
 Jr.
 Aqua-Clean Pool Service, Inc
 Marilyn & F. Michael Ashby
 Carol & Mike Atchison
 Kristen Atkins
 Autumn Trails Vet Center
 Olivia Baczek
 Gerald L. & Robin D. Baliles
 Banfield Pet Hospital
 The Bareham Family
 James & Lisa Barr
 Maurice & Karen C. Barros
 Jennifer Batchelder

Battelle Always Giving
 Ruthe Battestin
 Barry W. Battle
 Susan Bauer - Wu
 Angela Bazzarre
 Kim & John Beard
 Rosemary & John Beckett
 Jason Becton
 Dolores G. Bedell
 Jesse Bejar
 Jacqueline Bell
 Belote-Morgan Foundation
 Josh Bentley
 Liz Berrier
 Carmen & Alan Bewley
 Bold Rock Hard Cider
 Campbell Bolton
 Rene Bond
 Rebecca Bowyer
 Barbara Ann Boyce
 Lori & Tommy Brannock
 Brasserie Saison, The
 Bebedero, The Alley Light,
 and Whiskey Jar
 Helen M. Brite
 Jayne Brittle & James Jokl
 Roxanne & Ron Broadbent
 Allison Brock
 Jackson A. & Jenny T. Brown
 Janice & Thom Brown
 Leora Brown
 Marlaina Brown
 Sumner Brown & Herbert
 Beskin
 James Browne
 Pete & Florence Bruce
 Donna & Michael Bruggeman
 Alice & Thomas Buchanan
 Nichole Burkholder
 Burtons Grill of
 Charlottesville, LLC
 Wendy K. Caldwell
 June & James Campbell
 Canine Adventure
 Bennett Caplin
 Gerard Capone
 Anne Austin Carden
 John Carney
 Carol & Jack Weber Fund
 Grace & Gene Carpenter
 Kimberly & Bruce Carriker

Robert & Cynthia Cary
 Charles D. Chadwick, Jr.
 Kara Chandeysson
 Sarah Chapin
 Jessie Chapman
 Wendie Faye Chapman
 Charlottesville Tom Sox
 Gabriela & Stuart Chase
 Chipotle
 Cathy Chouiniere
 Ulla M. Chunn
 Leone L. Ciporin
 Maureen Moore Clark
 Jenny Strauss Clay
 Donald Cochrane
 Steven L. Combs
 Lorraine Conca
 Cynthia & William Cooke
 Corporate Giving Program
 Charles and Jackie Cottrell
 Virginia Craven
 Kay Cross
 Scheline & William
 Crutchfield
 Karen & Ben D'Alessandro
 Dallas
 Betsy Daniel
 Mary Ellen Daniels
 David E. Post Family
 Foundation
 Cheryl Anne DeAngelis
 Kelly M. Deichert
 Barbara Deily
 Richard DeMong
 Anne Dessertine
 Rosetta and Dan Dickerson
 D. N. Dillon
 Dr. Joesph R. Disabato
 Lea E. Doise
 Dominion Energy Charitable
 Foundation
 Domino's Pizza
 Ann & James Donovan
 Gail Dunn
 Lawrence & Vicky Eicher
 Elizabeth Johnston
 Charitable Fund
 Judith & Michael Ely
 Kimberly & Robert Emery
 ERA Bill May Realty Co
 Denise E. Esposito

Earl Estes
 Anne Marie Farrar
 James Fauber
 Faulconer Construction
 Company, Inc.
 Steve, Sue Ellen & Alex Fey
 Sara Fishback
 Christine Fleckles & Edwin
 Rushia
 Wendy Flynn
 Elizabeth & David Foreman
 The Four Seasons Tennis
 Club
 Michael Fox
 Kay & Jeffrey Fracher
 Cassandra L. Fraser
 Susan Friedman
 Barbara J. Frost
 Judi Frost
 Joan & Donald Fry
 Stephen & Virginia Gardner
 Jeffrey Garrett
 Terry & Ted Gaudette
 Clark Gaylord
 Douglas Gernert
 Kendall Giler
 Katharine & Alexander
 Gilliam
 Andrea Owen Gilmer
 Girl Scouts of Virginia Skyline
 Global Charitable Fund
 Ruth & Bill Goldeen
 Lisa & Demian Goldstein
 Kate Goodrich
 Vesta Lee Gordon
 Janet Gorman
 Marvin & Brenda Gose
 Susan & Clyde Gouldman, II
 Judith White & Samuel
 Green
 Sharon Gregory
 Jane & Bruce Greyson
 David & Carolyn Grow
 Summer & Matthew Gruber
 Kim Guenther & Ellen Braun
 Kevin Haag
 Andrew & Patricia Haines
 Susan K. Hall
 Jim & Carol Hallett
 C.D. & Joann Hammer
 Bonita & John Hanks

Whitt & Colston Hanshaw
 The Harrell Family Fund
 Melissa & John Harrison, III
 Tara Harrison
 Harry A. Wright's Inc.
 Sean and Renee Hart
 Kimberly Hawk
 Anna Jane Hayes
 Heather Hayes
 Dr. & Mrs. James W. Hayes
 Kelly J. Hayhurst
 Beth Heck
 Marina M. Heiss
 J. Henna
 Anna & Josh Heuslein
 Monte & Deborah Hickman
 Scott Hildebrand & Barbara
 Bousquet
 Hip Hop Hill LLC
 Wayne & Linda Hitchings
 Frederick & Mary Hitz
 Judy & David Hodge
 Sandra & Robert Hodge
 Brenda Fishel Hodgson &
 Daniel Hodgson
 Connie Horan
 Stuart E. Houston
 Jamie & Steven Hughes
 Gregory Hunt
 Linda & Donald Hunt
 A.H. Huntington, III
 Grace A. Hutcheson
 Sarah Hutchins
 Lindsay Ideson
 Independent Order of Odd
 Fellows
 Interpretive Software, Inc.
 Danielle Ivanova
 Jackie Bell Contracts PLLC
 Jack Jouett Middle School
 John Jackson
 James M. & Judith Jaeger
 Brenda Jarrell & James Call
 Betty W. Jennings
 Bill & "Pooh" Johnson
 Diane L. Johnson
 Emilie K. Johnson
 Holly A. Johnson
 Lisa & Jeremy Jones
 Rayford Scott Jones
 Sally & Zane Jones

THANK YOU FOR YOUR SUPPORT

Troy & Margo Jones
 Monica Jordan
 Junction
 JustGive
 Joe Kalkstein
 Lori M. Kaufman
 James G. Kavanaugh, Jr.
 Minnie Kay
 James & Sharon Kelley
 Lisa Kelley
 Julie Kelsey
 William C. Kennedy
 Barbara & Jay Kessler
 Mr. & Mrs. J.A. Kessler Jr.
 Sorooosh Kiani
 Jessica Kibbe
 Cecilia J. Kimata
 Joan S. Kindig
 The Kingfisher Foundation
 Debbie Kirby
 Beatrice Kirtley
 Debby Klosko
 Susanna Klosko
 Nancy & Jamie Knorr
 Deborah & Robert Kozura
 Cathy & Chris Kramer
 Sarah & Joe Krenn
 Robert A. Kuemmerling
 Howard Kutchai
 Lady Boss, LLC
 Lake Family
 Hope Lally
 Rebecca & Bruce Lanahan
 Anna Lane
 Kim Langford & Paul
 Freedman
 Marie Lattin-Souder
 Adria LaViolette and Jeff
 Hantman
 Ruth Law
 Sheila & Edgar Lawson
 Robin & Chuck Lebo
 Cordelia S. Lenz
 LexisNexis
 Jackie Lichtman & Russ
 Linden
 Linda K. Ford Revocable
 Trust
 LLR Inc
 Loring Woodriff Real Estate
 Associates

Allyson C. Louthan
 Cheryl Lynn
 Kim Lytle
 Joyce MacDonald
 Ronan & Remy MacDonald
 Sandy MacGregor
 Dea Mahanes
 Cynthia Maisannes
 Mary Ann & Raymond
 Mancini
 Beth & Joe Marcinko
 Pamela Margaux & Claude
 Thibaut
 Kelsey Marks
 Marilyn A. Marquardt
 Marilyn & John Marshall
 Michael & Donna Marshall
 Kim & Josh Matsko
 Joseph Maurio
 Karen McCarthy
 Boyd and Michele McCauley
 Susie & Jim McCormick
 Michelle & William
 McDonough
 Richard M. McKinnon
 Sheila McMillen
 James H. McVay
 Brian Paul Menard
 Teresa & H. Otey Meriwether
 Merkle | RKG
 Jill & Mark Meyer
 Carol H. Minetree
 Stephanie Mitchell
 Andrew Molesy
 Tanya & Charlie Monk
 Monticello Media
 Kyna & Andy Moore
 Lisa & Donald Morin
 Morning Glory Gardeners,
 LLC
 Anne & Scott Morrill
 Susan B. Morris
 Jeff & Ellen Moyers
 Courtney Mudd
 Deborah M. Murray
 MusicToday, LLC
 Marcus Mutts
 Sandra & Hans Natterer
 Cynthia Neff
 Bill & Betty Newman
 Roberta & William Nixon

Bobby & Karen Nolan
 Joanne Norman
 Jim Norvelle
 Wallace & Donna Nunley
 Nunley-Satira Family Fund
 Angie & Daniel Oakey
 Timothy & Janie Ober
 Debbie O'Brien
 Robert O'Connell
 David & Locke Ogens
 Jim & Jan O'Kelley
 Leslie & Nimmo Olsakovsky
 Steven Olson
 Christine & Kent Oots
 Nancy Ortiz
 Orzo Kitchen & Wine Bar, Inc.
 Suzanne & Conan Owen
 Chris & Gary Owens
 Georgene B. Palacky
 Bullett Palmer
 Shashank Parekh
 Kay & Davis Parker
 Karen & Brian Parshall
 Jane & Robert Paxton
 Virginia S. Payne
 Michele & James Pelafas
 Delta & Maddie Pelgrim
 Elizabeth & David Perdue
 Howell W. Perkins
 Petco Foundation
 PetSmart
 Courtney & Eric Pfister
 The Philanthropic Fund
 Platt Financial
 Carrie L. Pledger
 Lee & George Politis
 Av & Janet Posner
 Potomac Family Dining
 Group
 Jean & James Price
 Monica & Michael Prichard
 PunchOut2Go
 Margaret & Frank Quayle III
 Greg & Laurie Redfern
 Barbara J. Reid
 Cathy & David Reinhard
 Dorothy Richards
 Melissa L. Riddle
 Sarah & Norm Riggins
 Christine & Jeffrey Riley
 Jennifer Rinehart

Kristen Ritter
 Elizabeth H. Roberts
 Erika & Gregg Robinson
 Janice & Victor Rosenberg
 Carolyn & John Rosenblum
 Connie & Mike Rosene
 Roudabush, Gale &
 Associates, Inc.
 John & Karen Rowlingson
 Kay S. Ruffner
 S&P Global Foundation
 Liza & Mark Sackson
 Delnavaz Sanjana
 Gillian Sargent
 Jane Saunders
 Phyllis & John Savides
 Isabel & Chip Sawyer
 William T. Scherer
 Gertrude Scherman
 Allison & Tom Schildwachter
 Yvette Schmalz-Riedt
 Joan A. Schuette
 Michael Schutz
 Carla K. Scouten
 Sedona Taphouse
 Marilyn S. Seeley
 Rachel J. Setear
 John Shannon
 Margaret & Matthew Shapiro
 Patrick Sheehan
 Nancy Sheffield & Jeff Steck
 Katrina Sherrerd
 Wanda & David Shuster
 Tim Sigmon
 Linda Simonds
 Jessica Simons
 Rae & Richard Skinner
 Cindy L. Smith
 Gracie & Craig Smith
 Louise Smith
 Anne Snyder
 Joe Speidel
 Melissa Spurzem
 Frank Squillace & Jane
 Dittmar
 St. John, Bowling, Lawrence
 & Quagliana, LLP
 Anne Stadelmaier
 Holly & Mark Stancil
 Viktoria & Douglas Steel
 Jodie Stevens

Martha & Scott Stinson
 Virginia Stokes
 Peter Stoudt & Alice Handy
 Terry & Judy Strackbein
 Janet & John Sullivan
 Don Sundgren
 Jackie & Don Sutton
 Jane Talbott
 Telegraph
 Joan Tepper
 Alexandra Theriault
 Kelly Thomas
 Pam, Randy & Jennie
 Thomas
 Susan J. Thomas
 Linda & Robert Thomson
 Torey M. Todd
 Krista Townsend & Zachary
 Munzenrider
 Catherine Tremblay
 Marsha Trimble & Kent Olson
 Truist
 Barbara J. Turner
 Heather L. Turner
 Linda Turner
 Rebecca Turner
 Susan & James Turner
 Uhler & Company
 Linda K. Underwood
 United Way - Thomas
 Jefferson Area
 Amanda & George Urban
 Valorie Easter and Company
 - eXp Realty
 Dolores E. Van
 Michael & Heather
 Vanderweide
 Fannie Mae Rankin Vinci &
 Umberto Vinci
 Andrew & Susan Vinisky
 Chris VonFrieling
 W.E. Brown, Inc.
 Carolyn & William Wagoner
 Carole Wagonhurst
 Melissa & Michael Walker
 Anne Wallace
 Christina Washington
 Stuart and Kay Watterson
 Alison & Bernard Webb
 Wellborn + Wright
 Bobbie & Sam Wells

Christine & John Wells
Dolores Wells
Nancy Whitman & Robert
Campbell
Duncan M. Whittome
Jane & Robert Whitworth
Christine L. Wiedman
Shannon & Ronald Wilcox
Wiley Rein LLP
Barbara B. Wilson
Caroline S. Wilson
Nick Wilson
Kelly Wolf
John & Jean Wood
Deakin Wooten
Sharon & Ron Wormser
Joe & Lisa Wright
Karen & Bryan Wright

\$100-\$249

Vaia Abatzis
Bill & Carolyn Achenbach
Michelle & Reid Adams
Craig Kushel Agule
Al Aqualino
Kristin Albert
Diane & Wayne Allen
Elizabeth Allen & Deborah
Shapiro
Denise Allensworth
Christine Allison & Robert
Knight
Linda & Mike Amos
Charles & Kirby Ancona
Memet Anday
Carole & Andrew Anderson
Jane & Jim Anderson
Katherine Anderson
Margaret Anderson
Vicki M. Andreae
Andy & Polly Andrews
Heidi Andrion
Anonymous
Beatrix Arendt
Callie G. Arritt
Asbestco, Inc
Finlay Ashby
Thomas Baber
Annie Scoute Bailey

James Bailey & Marie
Perucci-Bailey
E. Gray Baird
Marianne & Calvin Baker
Lauren Baldwin
Karen & C.C. Ballard
Robert Baney
Bank of America Charitable
Foundation
Gary & Susan Banks
Donna Barnd & Chris
Moskaluk
James & Margaret Barrett
Kate Barrett
Sarah & Scott Barton
Gail Bashore
Becky & Chad Bassett
Thomas & Mary Jo Bateman
Wanda Baucus
Nancy & Dan Bauer
Victor & Lora Baum
Melinda Baumann & Margie
Garmey
Kristine & John Bean
Mona W. Beard
Michael Bednar
Linda C. Bell
Natalie Belt
Ben & Jerry's
Amanda Beresford
Carolyn Maddy-Bernstein &
Stephen Bernstein
Michele Bessette
Kay Bethea
Nicole & Earle Betts
Katherine M. Bevacqua
Carolyn & Frank Beverly, Jr.
David Bibb
Bryan Bickers
Jane & Rodney Biltonen
Karen Binney
Linda M. Birch
Susan, Thomas & Ashlee
Birckhead
Judy D. Blair & William W.
Cameron
Michele Bloodworth
Robert & Debbie Blosser
William & Sheller Bolton
William Bolton
Booster, LLC

Jo Ann Arcieri-Bostwick &
Charles Bostwick
Dek & Connie Bowen
Kelsey Bowles
Molly Boyle
Robert and Karen J. Boyle
Norm & Kadra Bradford
Alice & Donald Bradley
Wendy Bradley
Mindy Branch
Joyce Page Brandt
Lee & Teiko Breakiron
Melanie & Doug Brede
Sandra Breedon
Deborah Bremer
Norman Brenbridge
Daisy & Hank Brill
Lee & Catherine Briscoe
Robyn & Michael Bristow
Carrie & John Gregory
Brown
Christina Brown
Lianne Brown
Jacqueline Brownfield
Tim Bruce
Shelby Bruguere
Barbara & Bob Bruner
Kathryn & Robert Brut
Kelly & Eric Bruton
Debra Bryant & Lawrence
Groves
Gina Bull
Susan & Thomas Bunting
Marie D. Burdick
Alison & Mike Burke
Roger & Cindi Burket
Lucy R. Burnette
Burnley Moran Elementary
School
James Burnley
Anne & Jim Burroughs
Jeff Bushman
Carolyn Busket
Kay & Pat Butterfield
Britony Buxton
Kathy & David Byars
Alice & Jonathan Cannon
Ray Carnes
Debbie Carson
David C Carter
Tuck & Chris Carter

Esther Lynn Cash
Patricia Cass
Bevin & Vito Cetta
Jan Chaffin
John Chamberlin
William & Sara Chambers
Amanda Chang
Maria & Robert Chapel
Phil & Jeanne Chase
Keith Cheely
Chick-Fil-A at Pantops
Michele Christina
Emily & Kenneth Clancy
Bonnie Clarke
Inge Clausen
Danielle Claussen
Faith Van Clief
Patricia A. Clifton
Christopher Coccoziello
Myra Cohen
Betty Coleman
Clayton Coleman, Jr.
Carolyn Colley
Christina & Douglas Colley
Claire Colley
Linda Columbus
Caroline Colvin
Benjamin Combs
Congregation Beth Israel
Religious School
Timothy & Corinne Conlon
Mary F. Conlon
Holly & Ed Connell
Anne & Carter Conrad
Vicki Conti
Dora Conway
Gwyn & Brian P. Conway
Caroline Lenox Cook
Ken Cook
Linda Cook
Patricia A. Cook
Clyde Cooper
Corduroy Charitable Trust
Linda Cornick
Corning Incorporated -
Leadership Team
Herbert Cottrill, Jr.
John W. Courtney, III
Jamie Covell
Covenant School
James E. Craig, Jr.

Joyce Craig
Tony & Pamela Cranfill
Nancy Cranwell
Faye Creighton
Adele & Carl Creutz
Claire Cronmiller
Michael & Kathryn Cross
Keri & Chad Crum
Betty & Dale Crutchfield
Will Crutchfield
Elizabeth Curry
D&R Poole Inc/ DBA The
Great Frame Up
Rebecca Love Dailey
Bill & Jan Dalton
Patricia M. Daniele
Patricia & Donald D'Antuono
Karen G. Davenport
Hamilton Davis & Julie
Hansen
Kelly M. Davis
Mike Dawson & Kirsten
Niemann
Nathan Day & Samantha
Toet
Deaf Dogs Rock
Robert Deak
Maddy & John Deal
Ginny T. Dean
Ilma Deane
Phyllis & Russell Deane
Doug & Drene DeGood
June & Gerrit Degraaf
Jay & Leslie DeHaven
Sandra DeKay
Kathleen Delaney
Francesca & Eduard de
Lange
Lisa Delmar
Joan P. Delong
Laurel Dent
Brett Denver
Caroline Dessouky
Mr. and Mrs. Diamond-Jones
Robin Dierking
Dr. Lynn Dillon, Mr. Dan
Shepherd & Ms. Robin
Shepherd
N.D. Dillon
Rachel DiLuciano
R. G. Dimberg

THANK YOU FOR YOUR SUPPORT

Dale DiMisa	Jeff Ference	Global Impact	Kristen Heinan	Irene & Elliott Jennings
Kaki Dimock	Jim & Betsy Fernald	John Gonnella	Robert Helsel	Michelle & Joseph Jennings, III
Cassandra & William Dittmar	Jennifer & John Fetsko	Karen & Neal Goodloe	Achsah E. Henderson	Keith & Nancy Knoell
Jacqueline Dodge	Tom Fitch	Thomas & Mary Goodrich	Mary Jo Dollins Hendricks	Jersey Mikes
Ernie & Janice Dodrill	Seamane Flanagan & Rob Gowen	Sarah & Scott Goodwin	Margery C. Henneman	Sam Jett
Virginia Dodson	Page R. Flannery	Patricia Gordon	Kim Henson	Champ Johnson
The Dogg House	Floral Images, Inc.	Leon P. Gorman, III	Jane & Erik Hewlett	Stanley Johnson
Alexander Donaghy	Cecil R. Floyd, Jr., CPA PC	Gerald & Audrey Gottlieb	Anne Hicks	Lucy Welbourn Johnson
Kathleen Donnelly	Susan & Kent Flury	Crystal Grady	Scott Hicks	Jeremy Johnston
Sue Donovan	Mason & Richard Fogg	Terry & Andy Graff	Diane Hillman	Bruce Jolly
Ruth Douglas	Patricia Foley	Richard Grandage	Sharon Hiner	Susan Jones
Patsy H. Downer	Jennifer Fones	Ann Gray	Bruce Hobbs, Jr.	JP Morgan Chase
Bernice & Andrew Dracopoli	Marty Fontenot	Antoinette & William Gray	Kellie & Ben Hocking	Foundation
Diana Drake	John Fornaro	Dawn Greco	Lysa Hodgson	M.K. Juraco
Kira & Conrad Drennon	George & Laura Foussekis	Catherine Clay Greene	Carol & David Hogg	Erin Kalan
Ernest D. Dunn	Beth & Charles D. Fox IV	Ginger Greene	Jeannie & John Holden	Janice Kaltenbach
Lynda L. Dunn	Mary M. Frank	Susan Greene & Larry Stopper	Pamela & Andy Holden	Joan & John Kammire
Leslie Durr & Mark Fletcher	Nancy Fraser	Roxanne Greer	Holistic Animal Bodywork & Therapies	Susan Kaplan
Phyllis & Alvin Dwier	Ida Frederick	Leslie A. Gregg	Mary Hollar	Kardinal Hall
Lynelle & Christian Edeleanu	Jill Fredrikson	William & Ann Grey	Debra & Jeff Holloway	Pat & Ken Karhuse
Edgemont Farm, LLC	Cynthia French	Henry Griffin	Barry & Sheryl Horowitz	Angie & Stan Kask
Melissa Edmonson & Chris LaPierre	Elizabeth French	John & Caroline Griffin	Elvira & Joe Hoskins	Kathleen E. Howard
Michelle & Matt Ehrich	Marsha & John Frick, Jr.	Sheila Grissom	Ellen Houle	Revocable Trust
Shirley & Bob Elliott	Charles Friedman	Susan Gross	Dick & Mary Howard	Kimberly Kavanagh
John & Betty Elliton	Tara & Steven Friedman	Leanne M. Grove	Jon Howard	James & Stan Keathley
Mark J. Elson	Chelsea Frost	Barbara & Thomas Grzymala	Alice & Walter Hoyt	Bradley Keats
Terry & Kenneth Elzinga	Martha Fruehauf	Carole A. Guillemin	Lani Hoza	Richard & Johanna Keeling
Susan & Jim Emmart	Julie & Bill Fudala	Erica Gupta	Gary Huband	Marie Keese
Karen & Dave Emmitt	Elizabeth Fuller	Matthew Haas	Jeanne & Albert Huber	Michele & Kenneth
Employee Charity	Funds2Orgs	Martha Haertig	Kathie L. Hullfish & Laura Kuhn	Kellermann
Organization (ECHO) of Northrop Grumman	Flower Gale	Christopher Hahn	Michelle Dalton Hunt	Cynthia Kelly
Ellen English	Tom & Marilyn Gale	Deborah Hall	Patrick Hunt	Lucie S. Kelly
Bruce & Sarah Engstler	Shirley A. Gallagher	Erin F. Hall	William Hunt	Christine S. Kennedy
Mimi Ensminger	Ida Garrison	Lauren Hall	Kelly & William Huntley	Sarah Kent
Ann A. Ergler	Claudia Garthwait	Sylvia Hallock	Helen Ida & Leroy Moyer	William Kerr
Deborah L. Erickson	Jean Gary	Julie & Steven Hang	In honor of Stella, Bo & Knox O'Connor	Jonathan F. Kessler & Marsha Burger
Sharon Esau	Sean Gatewood	Jeff & Alissa Hansen	Andrea Ireland	Eleanor & Joseph Kett
Charlotte Estabrook	Harold A. Geller	Wayne Harlow	Bill Irvin	Paula Kettlewell
Joi Estep	Nancy K. Gercke	Mary & Graham Harris	Katherine Jack	Laurie Keville
Richie Estes	Joseph Gibson	Delia Harrison	Beverly J. Jacobs	Art & Sue Keyser
Jean Ethier	Struthers & Fred Gignoux	Judy & Paul Harrison	Jane Jaeger	Paul Kidwell & Averi Pakulis
Elisabeth Eurus	Gwyn Gilliam	Barbara Haskins	Slater Jameson	Walter Kilby
William Evans	Ian Gilliam	Susan Hatfield	Jennifer & Rob Jamison	Anne & John King
Janet & Bern Ewert	Kay & Ron Gillispie	Shannon Ryan Hauck	Timothy Jana	Nathaniel Kinsey
Bonnie Falbo & Dan Ehrman	Rachel Ginzales	Kedra Hauser	Kathryn Jarvis & Gregory Propp	Everett L. Kirby
Ann B. Faris	Girl Scout Troop 412	Louise & William Hay	Joan T. Jay	William & Ann Kirkland
Carol Faust	Girls on the Run of Central Virginia	Aisha Hayat	Amy Jeffrey	Anita & Kenneth Kite
Sallie V.P. Feild	Christopher Gleason	Pat Hayman		Bonnie & Daniel Kliamovich
Annamay E. Felkey	Micki Glenn	Frederick & Meriflo Hebllich, Jr.		Eva L. Knight
				Beverly Kocotas

Erwin M. Koeritz	Hall	Karen McGlathery	Jr.	Jean & Gerald Perry
Bob Koeze	Kathleen & Patrick Long	Tom McGowan	Robert Nedby	Russell Perry & Jeanette Rosenberg
Laura Kollar	Breck & Will Longstreth	Robert & Sabina McMahon	Kate Nesbitt & Frank Conley	Wendy Perry
Bruce & Lynn Koplin	Gayle & Bryan Lovetere	Susan & Prentice McNeely	Alex Newell	Joann Peters
Barbara J. Korol	Diane & William Lowe	Joanne & Bob McNergney	Thomas & Sheridan Nicholson	Larry & Kitty Pettit
Milena Koussa & Brendan Murphy	Stephanie Lowenhaupt	Pauline & George Meehan	Katherine Nickdow	T. Peyton & Carol Coyner
Tara & Dean Kurtz	Laurie Lowrance	David M. Mehringer	Phillip Nieburg & Nancy McLaren	Donna & Phillip Pfeifer
David Kutas	Patricia O. Lowry	Ginger Meislahn	Sandra & Hunter Melton, Jr.	Susan & Michael Picard
Jonathan Kuthy	Ming Lung	Sandra & Hunter Melton, Jr.	Lynette & Izzy Menchero	Peggy & Craig Pickering
Richard & Jane Lacasse	Valery Lytle	Meredith Mercer	Carol & John Merrill	Michelle Pitsiokos
William & Laura Laffond	Abigail & Olivia MacDonald	Elizabeth & Richard Merrill	Phyllis W. Merritt	Thomas & Elizabeth Pitt
Helen & Robert Landel	B. Gail Macik	Shan & Mark Meulenberg	Jennifer & Brendan Meyer	Lisa & Steve Placa
Fred Landess	Mary Madden	Candice Michalik	Kevin Novak	Tim Plant
Tuck & Sandra Landry	Suzanne Maddux	Jon & Mary Mikalson	Will Nugent	Maude Ann Pluta
Kathleen & Nicholas Lang	Catherine & Thomas Mancuso	Barbara Miller	Julia L. & Richard Nunley	Kaye Poff
Diane Langdon & Family	Kent & Sherry Mangold	John & Mary Miller	Martha & Dan Nunziato	Rebecca Polan
Claiborne Lange	Andria Manka	Lorna Derry Miller	John O'Connor	Wayne & Lori Ponton
Kathleen & David Larrabee	Barbara J. Mann	Mincer's University of VA	Kevin & Elizabeth O'Halloran	Lilie Potter
Josh Laseter	Valerie Mann & Timothy Webster	Imprinted Sportswear	Carolyn & Mark O'Hara	Elizabeth Powell
Thomas & Delia Laux	Evelyn Marshall	Helen & Henry Minich	Amy & Tom O'Leary	Emily Prabhu
Joyce & James Lawrence	Kathi & Bill Marshall	Jennie Sue Minor	Renee & David O'Leary	Margaret & David Pratt
Elizabeth Layton	Sarah A. Marshall	Christopher & Denise Mislow	Wren Olivier	Carol & Richard Price
Peter Leach	April Martin	Gerald Monnat	Dr. Theresa Olivo	Monique & Bill Pritchard
Mary Ellen & Jon Leachtenauer	Joan & Ramsey Martin	Suzanne Moomaw	Karen Olsen	Arlene Propst
Ann Leake	Andrew & Linda Martof	Barbara & James Moore	Dr. Angela Orebaugh & Tammy Wilt	Psychological Testing Services
Linda Leake	Judith Marymor	Bonny Moore	Walter Ott	David L. Puckett
Jessica Ledwith	Alice Leigh Mason	Brentney Moore	Debbie & John Owen	Trista Pullaro
Arlene Lee	Jennifer & Rick Matheny	Matt & Ann Moore	Paula & Randy Page	Natalie & Alan Purvis
Beth & Wendell Lee	Julie & Alan H. Matsumoto	Bonnie Morgan	Jim & Gracie Parks	Susan & Jim Quisenberry
Kye Lee	Marguerite E. Matter	Elizabeth F. Morgan	Diana & Harry Parlette, III	Elizabeth Rabin
Jeff & Amy Lenert	Paige & Hakon Mattson	Gordon & Jean Morris	Debra & Glenn Parsons	Dana & Angela Ralston
Shelbia & Alan Lengel	Doris & Paul Mays	Suzanne Morris	Betsy E. Patrick	Mary Anne Irene Randles
Linda Leshowitz & Tim Brazill	Deborah McAndrews	Tad Morris	Dr. & Mrs. James W. Patterson	Anne & Vernon Raque
Sharon & Douglas Leslie	Jan & Larry McCarthy	Hamilton & Alexandra Moses	Anne Patton	Judy Rasmussen
Barbara & Eli Lesser	Terri McCay	Mark Moss & Melanie Morris	Brenda Patton	Susan & Lloyd Raupp
Timothy S. Levenberg	Louise McConnell	Libby Palmer Mossman	Maria Paulus & Diane Villalobos	Megan Raymond
Yvonne Leveque	Janet McCormack	Mascha Mowry	Beale Payne	Julia O. Rea
John & Deborah Lindbergh	James McCoy	Betty J. Moyer	Susie C. Payne	Forbes Reback
Susan Lindsay	John McCullough	Jill Mulligan	Dale & Melissa Payton	Katharine Reed
Carol Lindsey	Jeanne M. McCusker	April Muniz	JoAnne Peach	Claus & Velma Reichle
Gordon & Ginny Lindsey	Pam McDaniel	Ed & Susan Murphy	The Peacocks	Mary Reiman
Sandy Liss	Suzy McDermott	Marsha R. Musser	Shirley & Arthur Pearson	John William Reston
Theresa Litalien	Jan McDougal	John M. Nabers	The Pease Family	Julia Rhondeau
Deborah & Douglas Little	Camp McElveen	Allan Nathanson & Jeanine Braithwaite	Robert Peery and Maureen Hegarty	Judith V. Rice
Deborah & Andrew Lockman	Amanda & Rob McEwen	Carolyn & Ronnie Neal	Doriane Perkins	Andrew Richards
Charles & Stella Loftin	Shelly & Shane McGee	Sarah & Kenneth Neathery,		Elaine Richardson
Kenneth & Gay Loftin	Barbara R. McGill			Deborah & Dean Riddick
Judith & Gary Lohman	Keith & Kimberly McGinnis			Diane Riley
Cartie Lominack & Kristine				Charlotte & R.H. Rinehart

THANK YOU FOR YOUR SUPPORT

Page Ritter	Earl Senger	Spicuzzaza	Jane & Tommy Tirrell, III	Michelle & Thomas Weber
Dawn Ritterband	Renee M. Severin	Carole Springer	Frances Todd	Rebekah Webster
Alan Y. Roberts	Hubert A. & Ann S. Shaffer	Sandy Staggers	Jane R. Tolleson	Tammy Weisman
Richard B. Roberts	Mark Shaffrey	Charles Staples	Ann Toms	Christopher Weiss
The Robertson Family Fund of Foundation for Roanoke Valley	Alfred Shapero	Betty G. Starke	Anne & Jay Townsend	Judith H. Weiss
Leslie Robinson	Christine Shearer	Margaret & Richard Stavitski	Toyota InfoTechnology Center USA, Inc	Jane Weldon
Estella Roddy	Booger & Wally Shell	Rebecca Steele & Clarence Fisher	Miles Treakle	Linda & Gareth Weldon
Jonathan Rodenbaugh	Debbie Shelor	Aphrodite Steiner	John L. Trimmer	Wells Fargo Community Support Campaign
Martha & Brad Rodgers	Jackie Shifflett	Amy Stevens	Christy Tromey	Cynthia Wells
Joanne & Alan Rogol	Vicki S. Shiflett	Brenda C. Stevens	Isabel Tuz	Karen & Greg Wells
Lauren Roman	Leah & Kevin Shiraishi	Deborah Stewart	University of Virginia Alderman Library	Christy & Anthony Wenzel
Leah Romanoff	Shinichi Shiraishi	Donna Stewart	John Updike	Leanna West
Gertrude & Jan Romer	Donna L. Shirley	Helen & Sim Stidham	UVA McIntire School of Commerce	Mike & Kelly West
The Root Family	Emily Nolte Shotwell	Blaine Stockton	Linda van der Linde	John & Margaret Wheeler
Faye & Jerry Rosenthal	Wendy L. Showers	Sue & Charles Stoke	Justyne & Joseph Van Dyke	Barbara White
Jeannette L. Ross	Margaret & Fred Sibley	Frank & Elizabeth Stoner, IV	Margaret vanEkeren	Darlene White
Nancy & David Ross	Chris Siebert	Strategic Financial Solutions, Inc.	Darlene & Harry VanEvery	Debbie White & Roy Cadoff
Danine & Colin Rosse	Mary & William Sihler	Kristin & Bill Streed	Robert J. & Rebecca L. Vanlier	Grace White
Allie Rudolph	Susan Simches	Clarissa & Stephen Street	Joanna Varrone	Jeff White
Annie & Stephen Runkle	Monique Simmonds	Pamela Strong	Susan Vernon	Sandy & Stephen White
Nara Rush	Ida Simmons & Butch Girdley	Eleanore B. Sturgill	John VerSteege	Susie & Mark White
Patricia Rusk	Mary & John Simonette	SunTrust United Way Campaign	Rose Vayo	Beth Whitehouse
Alison L. Ryan	Tim Sims	Ellen Roberts Susi	Paul T. Vesely	Timothy Whitehurst
Katie Ryan	Joann M. Simpson	Suzanne & James Sutherland	Donna & Dick Vinal	Morgan & Marlene Whiteley, Jr.
Joy & Joe Sabol	Jane-Ashley & Peter Skinner	Margreta & David Swanson	Lynda & William Vining	Jeanne Marie Whitney
Janet & George Sakell	Allen Skolnick	Nicole Sweitzer	Eleanor G. Voldrich	Anna Wilhelm
Cindi & John Sanborn	Richard A. Skwarlo	Sigrid & Thomas Sweitzer	Stephen F. Vondra	Caroline & Bill Wilhelm
Jill Saperstein	Allison & John Sleeman	Mary Lee Swift	Renate Voris	Wenche L. Wilkins
Courtney Sargeant	Craig I. Slingluff, Jr.	John Tansey	W.A. Lynch Roofing Co.	Ashley Sieg Williams
Marjorie Frame Sargent	Robin & Gary Sloan	Danielle Taylor	Charles & Sheri K. Waddell, Jr.	Becky Williams
Annie & Paul Sartori	Katherine L. Smallwood	Elizabeth & Harrison Taylor	Nicole Wade	Dr. Denise Williams & Mr. Christopher Yates
Sharon Sasser	Smith & Robertson, Inc.	Heather H. Taylor	Vivian Wade	Lou & Alan Williams
Angela & Robert Sawyer	Aaron Smith	Renate Taylor	Adam Van Wagner	Lynn & Tom Williams
Colette & Ed Sawyer	David & Anne Smith	Robert F. Taylor	Joann & Mac Walker, Jr.	Marcy & Scott Williams
Peter & Peggy Scherman	Dudrey Smith	Ellen Teplitzky	Lucy & White Wallenborn	Molly Williams
Paula & Barry Schmidt	Emma Smith	Susan Tharp	Christina Wallisch	Sandra Williams
Penelope Schomer	Margo Smith & Tom Cogill	James Thomas	Arden B. Walters	Stuart Williams
Christine & Eric Schrank	Martha Smith	Linda Thomas	Joan D. Ward	Jan & John Wilmer
Wendy Schrimp	Morgan C. Smith	Elsie & Mac Thompson, Jr.	Barbara J. Warren	Jack E. Wilson
Fred & Mary Schubert	Peggy Smith & Andy Lerner	Marshall & Virginia Thompson	Michelle & Dave Warwick	Teresa Wimmer
Jennifer & Thomas J. Schultz	William B. Smith	Mary Thompson	Paul Warwick	Alyssa Wittenborn
Richard F. Schupp	Timothy Snider	Joyce Thorn	Nancy & Kevin Watkins	Elizabeth R. Wood
Kathy Ray Scott	Beth & Baird Snyder	Kevin & Theresa Thorne	Debra A. Watson	Letitia Ann Wood
Kendra Scott	Cindy Snyder & A.T. Stevens	Prudence & Michael Thorner	R. Wayne & Mary Mullins	William Wood
Lisbeth & James Scott	Linda & Jeff Sobel	Ken & Joy Tilley	Susan Webb	Norman and Lori Woolworth
Elizabeth Seawell	James R. Sofka	Danny & Grace Tilman	Douglas Webbink	Carolyn & Lawrence Wooten
Jane & John Sellers	Jeff & Candi Southard	Timberwood Grill		Suzanne S. Word
Aileen Selmeczi	Susanna Spencer & Bob Gausman			
Roberta H. Senechal	Joyce Sperry			
	COL & Mrs. William L.			

Howard Wright
Dan & Betsy Yancey
Jacqueline Young
Seymour R. Young, Jr
YourCause
Victor & Julie Zaydfudim
Connie & Christopher
Zazakos, Jr.
Ginny & Rick Zeller
Zoes Kitchen

\$1-\$99

Lars & Kim Aasland
Diana Abbott
Michael Aber
George & Sharon
Ackerman
Ardis Acuff
Donna & Michael Adams
Lillie Adams
Thomas S. Adams
Monica Addleman
Michael & Patricia Adelman
Wendy S. Adkins
Peggy Aglubat
Diana Aima
Sahar Z. Akhtar
Albemarle County Sheriff's
Office Foundation
Albion Cabinets & Stairs
Inc.
Joan Alexander
Caitlin Allard
Linda Allard
David & Deborah Allen
Stacy Allenbach-Stunes
Anna Almond
Peter & Heather Amato
Virginia C. Amiss
Lore M. Amlinger
Lisa Amols
John & Linda Anderson
Pamela Anderson
Mary Andrew
Leslie Louise Andrus
Gail Angell
Eric Angevine
Deborah L. Angus
Anonymous

Charles Antrobus
Lynn Ann Appleby
Sanja Arandjelovic
Lisa Archual
Mary Lee & Charles
Armstrong
Nancy Armstrong & William
Holet
Wendi Armstrong
Clifford & Kate Arnold
Kurt Arnold
Jan Arnow
Juan Ascoli
Jayne Ashworth
Fletcher & Sally Askew
Cathi Athaide
Jack & Sue Au
Nicole W. Audibert
Barbara C. Aulebach-Ross
Linda Austin
Wayne & Sandra Austin
Mary Avon
Pamela Ayres
Katherine Baader
Gloria Lamb Baber
Joe Baber
Laurie & Steve Baber
Susan E. Bagato
Hope Bagley
Bailey & Olivia
Reed Bailey
Beth Baker
M. Leonard Baker
Edith Ballard
Irene E. Ballenger
Marie Ballenger
Judy Bancroft
Lisa Bange
Bank of America Employee
Giving Campaign
Gail & James Barber
Carolyn & James Barkley
Michelle Barksdale
Ann Barnes
Michael & Leah Barrett
Peter Barrett
Sharon K. Barrett
Christine Barringer & John
Spina
Pamela Barth
Katherine & David Barto

Matt Baskin
Mary Pamela Batchellor
Courtney Bates
Susan & Benjamin Bates
Chris & Keith Batt
Denise & Keith Batt
Jervy & Tryon Bauer, Jr.
Mike Bauer
Dorothy J. Baughan
T.R. Baun
Virginia Bayliss
Ellen Beahm
June & Grayson Beale
Corinne Beard
Jane Beck
Mary Elizabeth Beck
Lea & Paul Becker
Gabby Beckham
Patricia Beckham
James Beddow
Matthew & Suzanne Bednar
Rolando & Catherine Bega
Richard Behr
Analisa Bellamy
Samantha Belluscio
Amy Benson
Barbara & Jeffrey Berger
Lauren Berger
Bill Bernstein
Ed & Susan Berres
Danielle Gay Berrey
Gary Berry
Judith & Daniel Berry
Linda B. Berry
Roxanne Berry
Anne Bertrand-Guy
Sarah Bessey
Barbara D. Best
Faith Beverly
Janet Bevins
Duane & Mary Elaine Bickers
Stephanie D. Bickers
Katherine L. Bidwell
Phyllis J. Binder
Sarah Bingham
Eugene and Linda Bishop
Sharon & Scott Bishop
Mary Sue Biskup
Theodore Bittmer
Ann Black
Lynda Black

Shannon Black
Sheila Blackford
Lisa Blake
Michele Blazek
Kathleen & Dan Bledsoe
Rose Marie & Ralph Bledsoe
Robert Bloodgood & Marlene
Robinson
Lori Bluni
Katherine Boardman
Anna Boeschstein
Dotty Bohannon
Barbara R. Bonesteel
Lucy Bongers-Cupp
Julie Bonham
Andrew & Frances Boninti
Misty Boos
Kerryann Boure
Kristine Bourque
Suzanne G. Bovenizer
Guy Bowe
Bailey Bowen
Matthew Bowen
Rhonda S. Bowers
Kristen Bowsher
Sally Boyd
Christopher Boyers
Lynn Boyter
Paula & Earl Bracker
Nicole Brackett
Corliss Bradley
Shannon Bradley
Diane M. Bradshaw
Dawn Brancelly
Olivia Branch
Babi & Randy Branger
Barbara Branham
Kim & Kevin Branham
Andrew Brannock
Danielle Brass
Brasserie Saison
Vikki Bravo
David Brawn
Aubrey & Pamela Breeden
Kristin & John Breen
Libby Brewton
Pamela Brezinski
Patricia Bricker-Cook
Charles Bright
Elizabeth Brightbill &
Andrew Gabbert

Bright Funds Foundation
Lydia S. Briscoe
Michael & Melanie Britt
Dora Kay Brockman
Cathron Brooks
Cecilia Brooks
Carol & Robert Brown
Dolly Brown
Jennifer Brown
Kathi Ann Brown
Laura Brown
Mary C. Brown
Melinda & Richard Brown
Bethan Browning
Janine Brugh
Debbie & David Brumell
Christine Brunner
Maggie Bruno
Delores & David Brush
Karen Brusie
Bronwyn Bryans
Ann Bryant
Janice Bryant
Jessica Bryant
Kathryn & Evan Bryant
Catherine Bub
Ethel Buckhout
Carol W. Buckner
Janet Buffurine
Alex Bugge
Grace Bull
Beverly Bunch
The Bunn Family
Doug Buntz
Kara Burke & Chris McLane
Kathleen Burke
Pamela J. Burke
Carrie Burns
Charlotte Burns
Jasmine Burns
Ananda Burra
Constance Burt
Linette Burton
Rachel Burton
Eleanor Busa
Charles Busada
Juliana Bush
Lisa Bushey
Joyce & Frank Butros
Nancy A. Butters
Nancy & Bob Button

THANK YOU FOR YOUR SUPPORT

Barbara Byerly	Linda Childs	Donna Conley	Kirsten Daisley	Cora Diamond
Curtis & Carolyn Byers	Meta Chisholm	Erica Conner	Agnes Dalton	Wendy & Daniel Dicandilo
Railton Cabbell	Dorothy Chlup	Stacy Conner	Ralph & Charlotte Dammann	Terri Di Cintio & Chip King
Shannon Cahalan	Lisa Christina	Karen & Dale Connors	Sarah & Vic Dandridge	Nancy Dick
David & Gerry Callaghan	Maureen S. Chrystal	John & Nancy Cook	Becky Daniel & Jeff Reynolds	Heather & Bill Dickey
Betty & George Callaway	Karen Churnin	Julie Cook	Emily Daniel	Norma Aist Diehl
Ruth Cameron	Sama Chute	William F. Cooke	Will Darkins	David W. Dienner
Joan G. Canevari	Susan Cicchetti	Carrie & M. Truitt Cooper	Darin Darnell	Marguerite & Thomas Dierauf
Elinor Capehart	Diane Clark	Cheryl K. Cooper	Adrienne Darrah	Dee Dill
Francis & Jillann Carey	Donald & Sally Clark	Christopher D. Cooper	Nancy P. Davenport	Dorothy & George A. Dillard, Sr
Jacki Carlan	Lindsay Clark	Beth Coppin	Jacquelyn Davidson	Betty & Ed Dinwiddie
Angie Carle	Martin Clark	Erin Coppinger	Christine Davies	William Dirienzo
Adrienne L. Carlee	Christie Clarke	Perry & Rebecca Corbin	Amanda Davis	Winifred Disandro
David Carli	Joan Clements	Gina L. Corell	Angela Davis	Max DiStefano
Mike Carmody	Loretta Clements	Rebecca Corey	Beverly & George Davis	Mary Jane Divine
Katrina A. Carpenter	Michaela Clements	Nyssa Cornelius	Doris & Randy Davis	Tom Dixon
Sandra & Joey Carr	Roy M. Clements, Jr.	Peggy Cornett	Gayle & Tim Davis	Penney L. Dodson
Cynthia Carter	Shelby T. Clements	County Waste	Kim Davis	Roxanne Dodson
Steven & Jill Carter	Morgan Cline	Sara L. Courson	Megan Davis	Terry Dollar
Terry Carter	Margaret N. Cloutier	Kinsey Cox	Ruth J. Davis	Barbara Donegan
Jamie Caruccio	Kristal Cochran	Bonnie Craddock	Sarah & Hal Davis	Temple Doniel
Beverly Carwile	Libbey Coffey	Mark Craddock	Teresa Davis & Bill Nelson	Susie Donnell
Debbie Cason	Mary Ann Coffey & Murphy Moss	Mary Jean & Howard Craddock	Lee Davis-Skinner	Deb Donnelly
Eleanor Cassada	Debbie Coffield	Montie Craddock	Heather Davison	Sarah Donnelly
May & Brian Casterline	Jennifer Coggin	George Crafts	Susan Dawson	Chelsea Donner
In honor of Catherine Amonte (Cathy)	Bobbye Cohen	James & Wendy Craig	Amy Lynn Day	Carolyn Donovan
Morgan Catlett	Emily Cohen	Karen & Peter Craig	Mildred S. Dean	Oliver & Addie Dorfman
Elizabeth G. Cauthen	Richard Cohen	Margaret H. Craig	Ashley Deane	Kathryn Dort
Lisa Centofanti	Kirsten Cole	Marjorie Crane	Donald & Elaine Debanico	Karen & Donald Dougald
Lou & Janice Centore	Kristin & Christopher Cole	Janis Craun	Jane Dudek deButts	Virginia & Gregory Douglas
Andrea & Byron Chandler	Robert Cole	Cheryl Cravino	Arianna Decorte	Joan Dreicer
Madeleine Chandler	Kristen Coleman	Jennifer Crawford	Laurel Dedes	Laurie Drysdale
Carol L. Chandross	Lori Coleman	Jennie Crawford	Ashley Deering	Dale Dudley
Phil Chaney	Steve Colle	Patricia Crawford	Jacquelyn DeFusco	Jessica Dudley
Marty & Harvey Chaplin, Jr.	Shelley Collett	Charles Crenshaw	Diane & Hugh Delaunay	Sharon & Sonny Dudley
Cathy Chappell	Burr Collier	Susan & Larry Cresap	Ed & Frani Demaio	Alice E. Dulaney
Charlottesville Veterinary Hospital	David & Vreni Collier	Shirley J. Crickenberger	Susan & James Demas	Miles Dumville
Charlottesville Women of the Moose 731	Cathy Collins	Ruby & John Cronk	Jeff Demo & Elizabeth Patterson	Ann & John Dunn
Christine H. Charters	Colleen Collins	Cathy Crothers	Daisy Denham	Helen Dunn
Roland Chartier & Terri Thompson	Deborah Collyer	Debra & Spencer Crowder	Dannah Dennis	Joyce Dunn
Ken Chasin	Terry & Marc Columbus	William Crowder & Lorna Gerome-Crowder	Claire Denny	Bettie Dunnavant
Valerie Chasin	Jennie Lynn Combs	Allison Crowell	Rob & Adrienne Dent	Jean Dunnigan
Sally Chavez	John Combs	Linda Crubaugh	Elaine DeSimone	Tracy Durham
Andrew Chen	Jason Comfort	Susanne Cummings	Helen E. Destrempe	Katelyn Durkin
Yue Chen	Ronald & Marilyn Comfort	Kelly Curd	Nancy Dettor	Janet Durrer
Ceridwen & Dave Cherry- Levine	Greg Compher	Keith & Laurie Curtin	Alexander Deur & Xiaochao Zheng	Jean H. Dyer
	Holly Compton	CustomInk LLC	Laura & James Devine	Leah Dymek
	Rebekah Compton	Lori Cwalina	Murrielle & Stephan De Wekker	Maurly Early
	Kim Condrey	Mrs. Hovey S. Dabney		Dana M. Eastman
	Peter Conklin			Jenna Easton

Jill Eckenberger	Ron & Nancy Fischer	Kate Galloway	Jeri Goldstein	Birgit Gutkowski
Thena Edick	Jeffrey & Pamela Fisher	Maggie & Richard Gangloff	Larry Goldstein	Michael & Dorothy Haag
Lou Edmunds	Nancy Fisher & Ledford	Gabe Garcia	Linda B. Goldstein	Gina Habermeyer
Michael & Allison Egidi	Carpenter, Jr.	Rise M. Garcia	Terri Gomez	Marion W. Haddow
Jennifer Ehlers	Sarah Fisher	Keith & Mia Gardiner	Linda Gonder-Frederick	Gary & Amy Haden
Gene and Debbie Elder	Michael D. Fitts	Andrea Gardner	Stephanie Good	Brenna Haebel
Dr. Andrew & Virginia Elgort	Douglas & Casey Fitzgerald	Anna Gardner	Roberta & Wallace Goode	Jenny Haebel
Jo Ann Eliason	Jennifer & Eric Fitzgerald	Harriet & John Gardner	Julie Goodell	Marion Haege
Michie & Liberty Elliott	Mark & Liz Fix	Harriet K. Gardner	Justin Goodman	Janet Hahn
Miles Elliott	Barbara H. Fleming	Larry & Marilyn Gardner, II	Miranda Goodman	Lee Anne Hahn
William Erma	Jane & Robert Fleming	Sally M. Garland	Nancy & Bill Goodman	Temple & Britta Hahn
Nikki Emery	Christie Flesher	Nancy B. Garlick	Goodshop	Francis & Deborah Hajek
Steve Engel	Joan Flester	Julie Garmel & Jeff Greer	June Goodwin	Susan S. Hakala
Steven & Jane Engel	Andy & Pam Flynn	Betty Garrison	Lise & Christopher Gordon	Hale Pet Door National, LLC
Lisa Eorio & Cliff Maxwell	Susan Lee Foard	Fay Garrison	Chris Gore	Pamela Haley
Barbara Erb	Meghan Fogarty	Jane C. Garton	John Gormus	Cleo S. Hall
Petie & Ernie Ern	Nathan Foley	Karl & Susan Gass	Scott & Karen Goss	Gabrielle Hall
Sandra & Eugene Essner	Kathy Fontenot	Alisa Gates	Julia Crown Dawson Govan	Jenny Hall
Sarah Esterhay	Janie A. Forbes	Chris Gavin	Cameron Grable	Jessica Hall
Linda Estes	Erika Ford	Renee Gay	Joe and Brenda Graham	Joyce Hall
Kitty & George Eudailey	Gabriele Ford	Brenda Gentry	Grand Piano & Furniture	Loretta Hall
Jess & Zach Eustace	Karen & Doug Forsman	Elana Gentry	Company Benevolence	Rebecca Hall
Joan Evans	Rebecca Foster	Jeffrey & Mildred Gentry	Fund	Samantha Hall
Marc & Karin Evans	Jeanne Fournier	Catherine L. George	Adrienne & Ron Granitz	Sharon & Jonathan Hall
Sam Evans	Kenneth Fox	Andrea Geppert	Elizabeth & David Granville	Amanda Hallstead
Elizabeth Ewing & Skip Platt	Lloyd & Sharon Fox	Carol Gerber	Tania Grasso	Anne Halstead
Virginia Ewing	Amanda France	Florence Geyer	Kristy Gray	Candace N. Halverson
Lauren & Christopher Ezzyk	Leah Frances	Alma & Bob Gianniny	John & Mary Graysar	Robert Hamfeldt
Joan Ferguson Fadden	Jack Francis	Randy Giaramita	Lisa Graziano	Chris Hamilton
Hanan Fadil	Alison Francois	Beverly & Donald Gibson	Betsy & Michael Greco	Alan Hamilton
Sarah Fagan	Courtney Fraser	Norma Gibson	Hal & Mary Alice Green	Suzanne Hamilton
Justin Falco	Jane Freeman	Bela Giese	Larry & Barbara Green	Victoria & Rick Hamilton
Brooke Falwell	Sheila & Jeremy Freeman	Suzanne Gigante	Sheila Green	R.K & Paula Hamlett
Tannaz Farrahi	Robert Fritz, MD	Carol Gilbert	Deanna & Byron Gregory	Keith & Sheryl Haney
Nancy Fauber	Linda Fromm	Tabatha Gilbert	Donna Gregory	Margaret F. Haney
Doris H. Faulconer	Terry Fry	Carol A. Gilchrist	Jacob Gresh	Marilyn & James Haney
Amy Faulkner	Trisha Fuentes	Carroll & Robert Gilges	Joan & Peter Griffin	Doris Hanger
Valerie Felicetti	Reese Fulgenzi	Kelly Gill-Gordon	Teresa F. Griffith	Lori Hanger and Donna
Alycia Wood Ferguson	Anna Fuller	Amy & James Gillespie	Kirby Griffs & Julie Bowersett	Morris
Cynthia Ferguson	Kathy & Mike Fuller	Nancy Gillespie	Dana Grimm	Danielle Hanley
Kay Ferguson	Renee Fuller	Grace & Theo Giras	Roberta & Britt Grimm	David Hannah & Laurie
Sandra Ferris & Catherine	Kathy Fulton	Claudette Giroux	Mike Grine	McDade
Allen	Moffie Funk	Linda Girvin	Alice & Donald Gross	Noreen & Joseph
Horace E. Fidler	Joe Gabriel & Emily Easter	Dulcy Giuliano	Eleanor Grossman	Hannemann
Andrew Lee Fielding	Kim Gahring	Giving Assistant	Kelly Grubb	Ron & Margaret Hanson
Mike Fietz	Tina Gaines	Beverly & Thomas Glascock	Terri & Mark Grubbs	Peggy Harbert
Judith L. Fike	Cynthia Gallagher	Michael Glass	Ethan Gruber	Diane Hardee
Nicolas Finck	Mary Louise Gallagher	L.D. Glosser	Stephanie Guerlain	Diana Harlow
Karen E. Firehock	Jodi Galleo	Kathy J. Goebel	Diana Guerrero	Lisa Harlow
Carmen Fischer	Gallerycorp, Inc.	Jill Golaszewski	Teri & Andrew Guertler	Dorothy Harlowe
Lisa Fischer	Kimberly Gallo	Diana Goldman	David Gulick	Jessica Harrigan

THANK YOU FOR YOUR SUPPORT

Keith Harrington & Morgan Taylor	Marsha & William Herbert	Marilyn Horvath	Jasmin Jo	Gustave & Donna Kiewra
Buddy Harris	Timothy Herbert	John Hossack	Jennifer John	Victoria Kindon
D.J. & Andrea Harris	Judy Herndon	Cecelia House	Audrey Johnson	Allan & Ada Marie Kindrick
Jessi Harris	Denney Herr	Moiria Howard-Jeweler	Corinne Johnson	Kimberly & Christopher King
Bitsy Harrison & Terry Swain	John Herr & Mary Jo Herriman	Kimi Howell	Elaine Johnson	Susan E. King
Nezahat Harrison	Cynthia Hertzler	Megan & Aaron Howell	Kirstie Johnson	Stacey Kingsbury
Jesse Harshaw	Priscilla Hesford	Phyllis Howell	Col. Michael M. Johnson	Tommy Kinstle
Carolyn Hart	Jason Heuer	Mr. & Mrs. W. N. Howell	Pamela Johnson	Mable Kinzie
Robert Hart	Judith A. Heyde	Sherrard H. Howen	Sherry Johnson	Caroline & P. Kennedy Kipps
Barbara Hartless & Joe Sutherland	Deborah Heymann	Frank Hubbard	Ernest Johnston & Jennifer Johnston	Mary Kirby
Karen & Bill Hartman	Nell & David Hibbitts	Jill & Walter Hubbell	Jim & Nina Johnston	Emily Kirk
Janet D. Hatcher	Ellen Hickman	Sherrie Huber	Bruce Jones	Nancy & Oscar Kirkus
Betsy & Bruce Hathaway	Anna Hicks	Christopher A. Hubert	Darrell & Jean B. Jones	Allison Kiser
Matthew Hauck	Brenda Hicks	Zachary Hubert	David and Jennifer Jones	Lynn Kiser
Emily Hause	Jim & Betty Hicks	Anna Hudson	David W. Jones	Kathleen T. Kishore
Hugh & Debbie Hawkins	Molly Hicks	John Hudson	Debbie Jones	Gail Leftwich Kitch
Barbara & Mark Hawley	Deb Higgins	Mrs. Sterling M. Hudson	Martha Jones	The Kittlesen/Edelen Family
Robert Haxter	Patricia Higgins	Tonicka Hudson	Rhonda & John Jones, Jr.	Willow Kittlesen
James & Mary Lynn Haycraft	Barb Hildebrand	Janice R. Huebner	Suzanne W. Jones	Elizabeth Klaczynski
Maeve Hayden	Allison & Duncan Hill	Sarah E. Huggins	Terri Jordan	Gary & Lorraine Klein
Suzanne Hayes	Martha Hill	Karen Hukari	Kathleen Jump	Alyssa Kletnik
Joan & Bob Haynes	Theresa Hill	John & Mary Pat Hulburt	Frederick Jung	Allison Knight
Lynda Haynes	Darlene Hinton	Rosalee Hunt	Lucia Kaestner	Eli Kocotas
Polly B. Haynes & Craig Campanelli	Jay Hinton	Karin Huntington	Bob Kahn	Patricia Kohl
Gregory Hays	Wendy & Jay Hirsh	Alan Hurt	Cemile Kahveci	Morgan Kohout
Jessica Hays	Bill & Linda Hitt	Susannah Import	Kathleen Kamiya	Katie Kois
Nancy Headley	"The Hittingers"	Joanna Infantino	Tori Kanellopoulos	Jamie Kollar
Tonia Headrick	Marilyn D. Hocking	Lillian Inge	Audrey & Lewis Kardos	Cora & Wade Komisar
Liz Heal	Susan & Robert Hodous	Leslie Ingraham	Heather Karp	Angelia Koppenhoefer
David Healey	Bryan Hoffman	Melissa Ingram	Merrie Kaye	Sandra C. Korfanty
Patricia Hearn	Emily Hoffmann	Peggy & Frank Ingram	Carole Keathley	Mary Kay Kotelec & Jane Stinely
Sarah & Richard Heath	Kathleen Hoffman	Iron Paffles & Coffee	Zach Keifer	Deborah & Joel Kovarsky
Laurie Heatley	Michael & Leanne Hoffman	Linda & Michael Irons	Steve & Sue Kell	Mary Kay Kozuch
Heidi, Woody, Elise, Fenway & Roxy	Steve Hoffmann	Jessica Jackson	Tanya Keller	Marci Kramer & Daniel Koller
Hannah Hein	Ursula Holden-Corr	Robin Jackson	Carolyn T. Kelly	Deborah Krantz
Frank Heintz	Nancy Holland & Victor Lee	HD Jacobs	Lorraine Kendrick	Martha I. Krebs
Lisa & Mark Helprin	Bryan & Karen Holliday	Sheryl Jacobs	Whitney Ayres Kenerly	Ira Kreisman
Maria & Daniel Hemmings	Betty Holloway	Rebecca Jacobson	John & Kim Kennedy	Sophy Kron
Julia Hendon & Kenneth Yates	Marsha & Ed Holloway	Emma Jaeger	Dana, Dave & Jocelyn Kenworthy	Laura Kross
Carol Hendricksen	John E. Holmes, Jr.	Robert Jahrdoerfer	Jane Kerewich	Natalie Krovetz
Carol A. Hendrix	Doris & John Holt	Susan Jamme	Thomas & Martha Kersey	Natalie and Dave Krovetz
Walker Henley	Ted & Mona Homyk	Cindy E. Janssen	Rahul and Rochelle Keshap	Marianne Kubik
Ann & Lyle Henofer	Joyce Hong	Gail Jarvis & Stacy Walker	Barbara & Danny Kesner	Anne & John Kuehler
Anna & Jeremy Henry	Trisha Hongcharti	Joseph Jarvis	Evelyn & Gary Kessler	Marion B. Kuhn
Cheryl & Michael Heny	Meredith Hooke	Jason Jaumouille	Johanna Kessler-Sandridge	Drs. Prakash & Mahmooda Kulkarni
Matt Hepler	Sally & Dale Hopkins	Kiri Jefferson	Sarah S. Key	Heather Kunk
	Phyllis B. Hopkinson	Carla Jenkins	Linda Keyser	Shirley A. Kyger
	Ken Horne	Patricia & Warren Jenkins	Ruth & Robert Kidney	Emmett & Owen Lach
	John Horneff & Christine Peterson	Marianne & Arnold Jensen	Mara Kiernan	Veronica LaChapelle
		Angie Jewell		
		Patti Jewell		

Howard Lagomarsino & Marcia Lee Aulebach-Lagomarsino	Roni Jo Lester	Terence Lyster	Kathryn Mawyer	Alice Meiss
Jennifer Lambka	Tony Le Vere	Robert Madara	Leigh Maxwell	Janet B. Meistrell
Patsy Landy	J. C. & Charlotte Levenson	Anna Magee	Carol Lynn Maxwell	Robin & David Mellen
Aurora Lane	Paul & Susan Levine	Gary Mahoney	Thompson	Joseph & Christine Melnik
Monica Lane	Jane & Michael Levy	Emma Maiden	Jeannette May	Amy Melville & John Schroll
Chris Laneave	Melissa Levy	Susan & Dana Mains	Margaret Mayer	Carl Menard
Dorry Lang	Richard & Linda Lewicki	Hillary Maitland	Brittany & Andrew Maynard	Diane L. Menashe
Brenda F. Langdon	Peyton & Bill Lewis	Ariana Maki	Constance A Mays	Sumner Menchero
Charles Langham	Alexis Leys	Judy Mallory	David Mays	Olivia Mendez
Jennifer Z. Langley	Vera Lightfoot	Josh Malone	Marie & Donald Mays	Sandra Mendez
Mr. & Mrs. Tony Laquintano	Christian & Karenanne Lilley	Susan C. Malone	Randy Mays	Matt & Jill Meriwether
Schuyler Larsen	Christopher and Kimberly Lilley	Carol Manning	Jane McCarty	Rita Merk
Peg Lascano	Tony & Beeca Lin	Elisabeth Manuel & Kent Ayyildiz	Patrick McCarty	Erich Merkel
Jeffrey Lasek	Kaylee Linaberry	Heather & Jeremy Marcel	Sue Ann McCarty	Randolph & Caroline Merrick
Juliette Lash	Michael Lindgren	Marco's Pizza	Byron & Sueann McCauley	Johannah & Garrison Merrill
La Taza Coffe House, LLC	Hal & Cathy Lippard	Nancy Markos	Tracy McCauley	Betty Meyerhoeffer
Karen & Bertrand Latil	Nora Little	Ellen Markowitz	Heather Marie McClaren	Morgan Michaels
Michelle Laurich	Jacqueline Liu	Diane & Neal Marks	Marita McClymonds	Wendy Michalski
Michael Lautenschlager	Donna Lloyd	Ginger Marks	Karla McCollough	Elizabeth & David Michel
TariJo Lautenschlager	Karen & Jim Lockwood	Helen & John Marr	Cathryn McCue	David & Cindy Mick
Michele LaVallee	Lisa and Raymond Lockwood	Lillian & Richard Marsden	C. McCullough & K. Ahern	Mary Micucci
Angela Lavendar	Marsha & Ivan Login	Brandy Marsh	Maureen S. McCusty	Ina & John Mikkelsen
Michelle & Ralph Law	Carole & Leonard Lohman	Abby Marshall	Corinne McCutchan	Alyssa Mikytuck
Elizabeth Lawlor & Colleen Ewart	Lisa Marie Lombardo	Ann Marshall	Jennifer & Sean McCutcheon	Courtney Millard
Jody Lawrence	Jennifer Lonas	Cri Kars-Marshall & John Marshall	Ann McDaniel	Jarrett & Stephen Millard
Suzanne & Ed Lawrence	Christopher & Jessica Longen	Karen & Paxton Marshall	Deborah McDaniel	Julia F. Miller
Rob Lawson	Carl Longmire, Jr	Rebecca T. Marshall	Heather McDonald	Vicki & Brian Miller
Lisa Layne	Katherine Loose	Tracy Marshall	Madie & Michael McDonald	Dennis Mills
Nadia Lazo	Carrie Loperfito	Brandy Martin	Mary Ellen McDonald	Janice Mills
Sarah Leach	Barbie Lorenz	Michele Martin & Preston Syme	Catherine & Eugene McGahren	Julia Mills
Pam & Charles Leathers	Barbara Loveland	Jayne & Thomas Martinsen	Karen & Don McGee	Patsy Minahan
Gary Leavel	Sandy Loving	Mary C. Greer Elementary School	Regina & John McGovern	Clara Mincer
Darlene Lebedev-Matulka	Jeffrey Lovold	Mark & Robbie Mascotte	Dana & Patrick McGrath	Terrance Minor
Mo LeClair	Athena Low	Kate Mason & Mike Fitts	Laura McGrath	Marie Mitchem
Rebecca & Thomas L'ecuyer	Gail & Bill Lowe	Leslie Mason	Avis McGuiggan	David & Daisy Moga
Kelsey Lederman	Geri Lowe	Thomas A. Mason & Marie-Christine H. Guyonneau	Nicholas McIntosh	Joseph & Meredith Moneymaker
Mary Ann Lee	Zoë & Maggie Luchini	Jean Mastrogiovanni	Emily McKean	Percy & Anne Montague, IV
Camille Leech	Roxanne Lucier	Christopher Mastromarino	Denise McKee	Susan & Michael Montgomery
Ruth & Robert Leffers	Annelise Lundgren	Jeannette Mastromarino	Kathy & Sam McKelvey	Trevor L. Moon
Alicia Lenahan and Ronald Ignotz	Judy Lung	Susan Mathis	Tom McLaughlin	Russell & Bobbie Mooney
Suzanne Lennon	Courtney Lutz	Chris A. Matthews	Carolyn McMillin	Shawn Mooney & Peggy Mowbray
Eric Lent	Galina Lyles	Wes Mattson	Thomas & Lisa McMurdo	Brent Moore
Heather N. Leonard	Kenny Lynch	Richard & Cathy Maupin	Kit & Joel McNally	Cindy Moore
Melanie Lepper	Peggy Lynch	Bettie Mawyer	Carrie & Robert McNamara	Debi Moore
W. Leroy and Betty Eheart	Viki & Anthony Lynch	Brenda Mawyer	Liam McNamara	Douglas & Joyce Moore
Leslie & Gary Leser	David Lynn-Overbey	Kathryn M. Mawyer	Christine and Will McNeely	Gail & Robert Moore
Linda Levin Lester	Phyllis Lyons		Deborah & Patrick McPhillips	Hunter Moore
	Robert & Marie Lyons, Jr.		Barry Meek	Jessica Maria Moore
			Anne Megibow	
			Sharon Megill	

THANK YOU FOR YOUR SUPPORT

Jo Ann & Deloy Moore
 Roberta & Charles Moore
 Sheri Moore
 Shirley R. Moore
 Susan Moore
 Ross & Melissa Moorefield
 Fitz-Hugh C. Morgan
 Jean Morgan
 Jennifer Morgan
 Megan Morgan
 Theresa Morgoglione
 Bobby & Joyce Morris
 Candace Morris
 Diddy Morris
 Donna Morris
 Joyce & Thurman Morris
 Joyce H. Morris
 Karen W. Morris
 Lyman & Shirley Morris
 Pamela Morris
 Richard Morris
 Terry Morris
 Wilson Morris
 Jane Morton
 Tammie Moses/Moses Tax
 Bridget Moss
 Mountaintop Montessori
 School
 Mount Olivet United
 Methodist Church
 LaDonna & William Mowry
 Diane Moyles
 Nicole Durden Mundy
 Gabriela Munoz
 Janice S. Munson
 Diane Murphy
 Linda Murphy
 Max Murphy & Elaine
 Heffelfinger
 Eileen Murray
 Elizabeth & JJ Murray
 Merrick & Steve Murray
 Daphne & Paul Myhre
 Sharon & Michael Myrsten
 Patricia Nabers
 Julien Nadeau
 Jacob Nadkarni
 Jessica Napier
 Christine Nawrocki
 Karen Neale
 Kelly Kay Near

Anne & Mitch Neff
 Harrison & Andree Nesbit
 Barbara & Howard Newlon
 Jackie & Charles Newton
 Marsha & Danny Newton
 Thedra E. & John W. Nichols
 Betty Jo Nickles
 Lori Nicolaysen
 Jennifer Morgan
 Krista Niece
 Steve Niemi
 Daniel & Elizabeth Nissen
 Amie Nixdorf
 Lauren Noe
 Barbara J. Nordin
 Elaine M. Norman
 Steve Northcott
 Laura Nucci
 Mary Elizabeth Oberle
 Barbara G. O'Brien
 Charles & Maureen O'Brien
 Alice & Brian Oconnor
 Sarah O'Connor
 Steve & Cathy Ode
 Cara J. Ohlsson
 Diane Okusa
 Judith Oliva
 Elton & Cheryl Oliver
 Ollie & Pepper, LLC
 Ruth Olson
 Elizabeth O'Mara
 Alan O'Neal & Loes Van Riel
 Laura O'Neill
 Jenna Ordel
 Jo Ordel
 Mary Orsini
 Joseph Orsolini
 Rebecca Orsund
 Christen Osburn
 Kateri Osburn
 Arlene T. Oslin
 O'Suzannah
 Jacqueline Ould
 Knox Overstreet
 Charlie Owen
 Marilyn Owen
 Kathryn Owens
 Lori Owens
 Katherine Owsiany
 James & Sherron Pace
 Martha & William Pace

Katy Paden
 Barbara Page
 Mary Page
 Matthew Pahl
 Betty B. Paine
 Kim Painley
 Nell Pallotta
 Maryellen & Charles Palm
 Tracie M. Palmer
 Cathy Palombi
 Edwina Pancake
 Pantops Pet Salon
 Athena Pappas
 Cathy Palombi
 Edwina Pancake
 Pantops Pet Salon
 Athena Pappas
 Kim Robyak Park
 Ellen Parker
 Kristi Parkhurst
 Les Parks
 Susan & Bidhan Parmar
 Anne Parrish
 Tammy Parrish
 Charlotte T. Parsons
 Margaret & Monte Parsons
 Ruth H. Parsons
 Ellen & Bob Pate
 Team Patrouch
 Addielayne Patterson
 Barbara & Charles Patterson
 Robert Paviour
 Lisa Pawlina
 Samuel & Cynthia Payne, III
 PayPal Giving Fund
 Peacock Automotive
 Hannah Pearce
 Ronda Pearl
 Lester Pearlstein & Ronna
 Gray
 Brooke H. Pearson
 Cheryl C. & Norman Pearson
 K.K. & Larry Pearson
 Kyle Montgomery Pearson
 Patrick Peden
 Kathryn Pedersen
 Paula & Donald Pell
 Barbara Pemberton
 Becky Pence
 Roberta Penkava
 Marie Peppers
 Pepsi-Cola Bottling Co.
 Kathryn Perez & Rachel
 Baum
 Elizabeth Perkins

Cindi Peterson
 James Peterson
 Emily Peverall & Jacob
 Richards
 Susan Ordway Pfaltz
 Caitlin Phillips
 Christie Anne Phillips
 Mary L. Phillips
 Jacquie & John Pickering
 Bethany Pierce
 Deb Piereman
 Pauline Piotrowski
 Josie Pipkin
 Jessica Pippin
 Larry Pitchford
 Lois & Warren Pitts
 Lisa Pixley
 Plow & Hearth
 Michelle Plum
 John Pluta & Holly Horan
 Pamela Poland
 Bob & Judy Polhemus
 Skyla Pollard
 Carol Pollock
 Maryline & Jason Pollock
 Amy Pollok
 Jonathan Pool
 Ashley Poole
 Mary Poole
 Linda Port
 Eleanor S. Porter
 Dotty Posey
 Emily & Enos Powell
 Karen & Michael Powell
 Rita Ann & Marvin Powell
 Amoret & Michael Powers
 Kevin Pratt
 Ike Presson
 Mary Lyle Preston
 Ann Marie Preuss
 Charlene Price
 Dennis R. Proffitt
 Helga Prosser
 Nicole Prysby
 Afton Pugh
 Ronald Pugh
 Diane Pullaro
 Nick Pullaro
 Lorelei Pulliam
 Mary & Dave Pullin
 Patrick Punch & Leslie

Middleton
 Paula Lynn & Joseph
 Quagliana
 Rhonda E. Quagliana &
 William Barkley
 Nancy & Cynthia Quass
 Katherine Rabe & Stephen
 Hutchinson
 Melanie & Brian Rader
 Regina Ragland
 Dana Ragon
 Sue Rainey
 Elaine Rainwater
 Judy Randle
 Random Row Brewing
 Company
 Rapidan Baptist Church
 Jeff Ratliff & Margot Elton-
 Ratliff
 Jane & George Ray
 Karen Read
 Mia Read
 Rebecca's Natural Food
 Rovers Recess
 Brigitte & Chris Recke
 Siobhan Reddy
 Reed Electric LLC
 Carolyn M. Reed
 Casey & Steve Reed
 Jill Reed
 Karie Reed
 Marga Reed
 Richard and Susan Reed
 Susan Reed
 Dillon Regan
 Jeannine Regan
 Ashley Reibel
 Jim and Barbara Velie Reid
 Richard & Sandy Reid
 Nita Reigle
 Irene Reilly
 Heena & Stephen Reiter
 Cheryl Renaghan
 Michelle Renee-Reff
 Carol Renn
 Christine & Nicholas
 Reppucci
 Amanda Reynolds
 Edwin & Dale Reynolds
 Helen & Albert Reynolds
 John Reynolds

Karyl Reynolds & Bill Whary	Jennifer Rubenstein	Alma Scott	Betty Smallwood	Cat Stanley
James A. & Mary-Scott Rhoads	Warren Rucker	Joanne Scott	Amanda & Michael Smith	Richard & Courtenay Stanley
Kimberly Rhodes	Christine & Darryl Rudge	Mary Linda & Ron Scott	Ann J. Smith	Ruby Stanley
Madeleine Rhondeau	Jamie Rule	Sarah Scott	Carol Smith	Carol Staton
Anne & Frederick Ribble	Cecilia Rumsey	Heather Scozzarella	Daniel Smith	Nikki Steingold
Susan Rice	Susan Rumsey	Penny Faith Seiler	Deborah & Jeffrey Smith	Christian & Jason Steinmetz
Julienne Richards	Dorothy Rush	Lindsay & Arnaud Sekreve	Deborah Smith	Carol R. & John S. Stephens, III
Virginia H. Richards	Kris Russell	Jake and Alison Selverstone	Kathleen M. Smith	Christine Stephens
Michael Richardson	Colette & Michael Russo	Patricia H. Severson	Lauren Smith	Jillian Stephens
Christina Riebeling & Scott Wiley	Robert Rutter	Tess Sewell	Natalie Smith	Patricia Stevens
Riff Raff Productions/Sour Fish Events	Amy & John Ryall	Sara L. Sgarlat	Phyllis & Ray Smith	Donald Stevenson & Leah Stoddard
Leslie P. Rittenberg	Devon Ryan	Mary & A.C. Shackelford, Jr.	Ray & Judy Smith	Lisa & Tripp Stewart
Allison Rittenhouse	James & Suzanne Ryan	Sheri Shackelford	Shelley Smith	Neil M. Stewart
William Ritter	Lee K. Ryder	Alex Shafran	Tara Smith	Tamsin Stewart
Claudia Rival	Maritza Saavedra	Judy Shah	Thomas Smith	Tracey Stewart
Holly Roach	Marty Sack	Jane Shannon & Don Bourret	Cynthia Smith-Power	Katie Stiffler
Jean & Robert Roane	Gerald Louis Sackett	Mary E. Sharpley	Kim Smyth	Laura Stiles
Rose Roberson	Corey Salem	Gillian Shasby	Jan Smythers	Martha Stockton
Barbara Roberts	Susan & George Sallwasser	Valerie Shelley	Ronald & Cheryl Snead	Alison & Steve Stokes
Jane & Jim Roberts	Amie & Greg Salmon	Austin Shelly	Rose Snead	Heather Wood Stokes
Joan & Michael Roberts	Morgan Salmon	Shentel Management Company	Missy Snelling	Heidi Stone
Judy Roberts	Karen L. Salmonson	Jackie Shepard	Chloe Snodgrass	Kim Stone
Kristin & Brandon Roberts	Ellen & Stuart Saltzman	Betty Sherrod	Chelsi Snow	Terry Stone
Lynne Roberts	Jean R. Sampson	Doron Samuel-Siegel	Joan & Ronald Snow	Nancy & Thomas Strassburg
Tonya & John Roberts	Marion Samuels-Konkle	Katie Shevlin	Ruth M. Snyder	Shannon Dee Strassner
Rita & George Robinson	J. David & Betty Sapir	Donna Shewmake	Debra & Jack Sobel	Christina Strickland
William Robinson, III	Sara Smith	Julia Lewis Shields	Sofia 29 LLC	Steven Strickler
Ronda Robles	Jill Saukel	Chelsea Shifflett	Emily & Keith Sohr	Michael Stringer
Kaylah Rodriguez	Kellie Sauls	Brenda & Eddie Shiflett	Anne Carter Somerville	Ella & Richard Strubel
Abbey Rogers	Betty & Joseph Saunders	Tammy Shiflett	Lori Some	Martha Wynne Stuart & Vicki L. Hawes
Briarley C. Rogers	Carl & Katheryn Saunders	Mimi Shin	Betsey Soulsby	Elizabeth O. Stubblefield
Natsuko Rohde	Diana & Terry Saunders	Shirley Shotwell	Southern-National Ski Patrol	Brenda & Perry Stubbs
Brooke Rolfe	Lynne & Steven Saunders	Jason Showalter	Patricia Spacks	Patricia Stulting
The Rooneys	John & M. Geraldine Savory	Anita Showers	Sarah Spangler	Chun Su
Jacqueline Roper	Charlotte & Charles Saxon	Cindy Shull	Niki Spencer	Margaret & Harvey Sugerman
Michele & Joseph Roscelli	Erika Schaeffer	Brody Shumate, Rylee Shumate & Danika Barnes	Kendall Speno	Brandon Sullivan
Christopher Rose	Suzanne & Ignacio Schaeffer	Michael Shveima	Mildred Spicer	Cynthia Sullivan
Karen Rose	Carrie E. Schaffer	Polly L. Sibert	Helen Spielman	Gleamer & Joseph Sullivan
Susanna B. Rosen	C.R. Scherzinger	Cyndi Sickler	Lora Spiller	Heather Sullivan
William Rosen	Jennifer Schettler	Deborah & Thomas Sillett	Beth Spindler	Mariel Sullivan
Cassandra Ross	Heather & Matthew Schilling	Rachel & Fred Silski	Jean Spradlin	P. Kevin Sushka & Anna Hammarskjold
Patricia Ross	Andrea Schluge	Neil R. Silva	Melinda & Michael Sprinkel	Lauren Sutton
Molly Rossberg	Christa Schmitt	Janice & Larry Silverman	Virginia & Sandy Sprouse	Missy Sutton
Erica Roth	Erin Schneider	Christian Simmons	Janet Stack	James Sweeney
Scott Roth	Carmen Schoelkopf	Siniall, LLC	Mary Stack	Shelley Sweeney
Samuel Rothgeb, Jr.	Elliott & Gerald Schoenig	Niki Skaggs	Alan & Helen Staley	Casey Sweren
Andrea Rowanhill	Teddi Schrock	Rebecca Slater	Anne & John Staley	
Rosamond Roy	Sarah Schubert	Savannah Slater	Elizabeth Stalfort	
	Eleanor & Norman Schwartz	Glenna Slosson	Jay A. Stalfort	
	Rebecca & Joseph Sciarrino		Debby & Jason Stanford	
			Michael Stanford	

THANK YOU FOR YOUR SUPPORT

Linda Swinson
 Tammy Szabo
 Kristin & Joseph Szakos
 Alexandria Tabasso
 Talbots
 Kim Talley
 Alex Tang
 Joan & David Tanner
 Susan Tantlinger
 Target Corporation
 June Tate
 John Tatum
 Mary Tatum
 Louise & Dickie D. Tayloe, II
 Charlotte Taylor
 Cynthia Taylor
 Kay Taylor
 Mia Taylor
 Michelle Taylor
 Rose & Steve Taylor
 Vonnie & Todd Taylor
 Cathy & Joe Teague
 Sydney Tenhundfeld
 Anne B. Ternes
 James Terrell
 Pamela Tetro
 Chere Tew
 Debbie Thacker
 Margery Thacker
 Nell & Stephen Tharp
 Jane Thelen
 Catherine Theroux
 Mary Jean Thiele
 Amy & John Thomas
 Dawn Thomas
 Dorothy M. Thomas
 Elaine Thomas
 Glenda & Tim Thomas
 Judy Thomas
 Julia Thomas
 Martha Thomas
 Michael Thomas
 Michele & Ellison Thomas
 Patricia Thomas
 Cecelia Thompson
 Debbie Thompson
 Margie Thompson
 Mary Ann Thompson
 Polly & Tom Thompson
 Terri Thompson
 Three Notch'd Brewing Co

Rebecca & Leon Tilley
 Whitney Tillman
 Jacqueline J. Tirrell
 Ruth & Betty Titterington
 The Titus Family
 Ellen & Harris Tobias
 Janis Todd
 Jen Toe
 Linda & Vance Tomei
 Roy Tomlin
 Kathleen Tourtellotte
 Susan Towe
 Jane Tower
 JJ Towler
 Katherine & William Towler
 Terry & Harrison Townes
 Nancy C. Townsend
 Megan Tracy
 Lindsey Trail
 Allie Tran
 Tia Troester
 Jennifer A. Trompetter &
 Rich Warren
 Lawrence and Mary Tropea
 Penny & Thomas Troutman
 Matthew Tsoy
 Beverly & Nelson Tucker
 Eric Tucker
 Sally Tucker & William Cocke
 Sandra & Terry Tucker
 Charlotte & Waldo Turfboer
 Jennifer Turner
 Michele Turner
 William Twigg
 Diana D. Tyler
 United Way of Greater
 Augusta, Inc.
 United Way of Greater
 Philadelphia & NJ
 Joe G. Valencia
 Gail Valentinsen
 Laura Van Camp
 Rebecca Van Den Heuvel &
 Christopher Schmitt
 Brook Vanbuesking
 Pamela & Keith VanDerbeek
 Kim & Mac Vanderploeg
 Bill Van Doren & Laura
 Sutherland
 Stephanie van Hover
 Judith Van Noate

David VanNoy
 Ernetta & Robert Van Orden
 Claire Veber
 George Verghese & Kristen
 Savola
 Verizon Employee
 Engagement
 Vickie Vess
 Andrea & Charles Vest
 VFW Ladies Aux
 Ellen & Paul Vieth
 Martin Volaric
 Ed & Sandy Volkstorf, Jr.
 Karin Volquardsen
 Joanna Vondrasek
 Monica Vontobel
 Hana Vratna
 Michele Vuono
 Gillian Wade
 Dr. & Mrs. Joseph J. Waff III
 Kathryn Wagamon
 Elisabeth Wagner
 Alex Wahl
 Marianne Walendowski
 Joyce R. Walker
 Lisa Walker
 Suzanne Walker
 Tory Walker
 Martha & J. Gregory Wall
 William P. Wallace
 Lois Wallenhorst
 Danielle Waller
 Ernie Walls
 Claudia Walpole
 Danielle Walton
 Lacy E. Walton
 Susan A. Walton
 Sylvia & Thomas Walton
 George & Martha Ward, Jr.
 Louise & Charles Ward
 Rebecca Ward
 Patty Warren
 Sarah & Chris Warring
 Brenda Warwick
 Barbara & Scott Waskey
 Holly & Jerry Watkins
 Elizabeth Watts
 Alex Weaver
 Anita Webb
 Cathy Webb
 Georgia Webb

Kathryn Webb
 Elise Weber
 Jayne Weber
 Lewis Allan Weber
 Timothy Wedge
 Mary Weinch
 Joanne & Gerald Weinstein
 Neva & David Weisman
 Christina Weisner
 Sheila & Bertram Weiss
 Shirley & Tom Welch
 Krista Welder
 Kathryn Welker
 Linda & Frank Wells
 Linda J. Wells
 Brian and Jeanine Werner
 Anna Brooks Wertheim, Ava
 Wolf, Parker Borches
 Alyson West
 Beverly L. West
 Brenda & Ken West
 June K. West
 Western Albemarle High
 School
 Sandra Westmoreland
 Marc and Rebecca
 Wetherhorn
 Carol Ann Wetmore
 Cheryl Wetzel
 Anne & Joseph Weybright
 Jean & Munsey Wheby
 Barbara & Robert Wheeler
 Judith L. White
 Catrina Whited
 Shiloh Whitehead
 Michelle Whitlock
 Joselyn Whitsett-Bell
 Gladys Wiley
 Nancy Wiley
 April Wilkerson
 Marie Wilkerson
 Marcia Wilkes
 Leslie Wilkinson
 Katherine & Fred Willard
 Paulette Willard
 Alexandra & Brian Williams
 Andrea Williams
 Catherine & Christopher
 Williams
 Cyane Dandridge Williams
 Eliza K Williams

Faye & Bill Williams
 J. Page & Peggy Williams
 Veronica and Thomas
 Williams
 Craig and Barb Williamson
 Susan & John Williamson
 Daniel Willingham
 Cathy & Paul Willis
 Lloyd & Margaret Willis
 Patty & John Willis
 Ryan Willis
 Zoe Willow
 Alex Wilson
 Dan & Patti Wilson
 Elizabeth Wilson
 Emily Wilson
 Katie Wilson
 Katy Wilson
 Mark Wilson
 Rebecca & James Wilson
 Renee Wilson
 Regenia & Shelton Wine
 Charles M. Winkler
 Tara Wisniewski
 Susan & Andy Wist
 Kayla Wolfe
 Ann Wood
 Barbara & Richard Wood, III
 Edna P. Wood
 Gloria & George Wood
 Gretchen Wood
 Martha Wood
 Merle Wood
 Nancy Wood
 Preston Wood
 Peggy & Bob Woodall
 Elizabeth Woodard
 Sarah Woodford
 Connie Woodruff
 Debra L. Woodson
 Joyce L. Woodson
 Marshall Woodward
 Dandridge Woodworth
 Wooltrax, Inc.
 Joy Woolard
 Anne R. Worrell
 Varley Wrick
 Alice Wright
 Beverly L. Wright
 Daisy Wright
 Don & Joice Wright

Elizabeth & Kevin Wright
 James Wright
 Mike & Laurie Wright
 Sadie G. Wright
 Sally L. Wright
 Joe Wyant
 William Wylie
 Tomoko Yashino
 Meghan Yeatts
 Teresa Yelton
 Raymond Yerkovich
 Kristin Young
 Michelle & Derek Young
 Diana & Douglas Zanzot
 Matthew Zaremsky and
 Sam Ley
 Jean A. Zearley
 Hadley Zeavin
 Esther Zebley
 Shanna & Nik Zeigler
 Boyd Zenner
 Eva Zimmer & Charlotte
 Hubert
 Carol Zirk
 Linda & David Zuby
 Cynthia & Christopher
 Zwadlo

IN KIND

Aaron Watson Photography
 Diana Abbott
 Sandra C. Abbott
 Ellen Adams
 Eric Adderley
 Lezli & Bennett Alford
 Diane & Wayne Allen
 Chris Allerton
 Beth Alley
 Christine Allison & Robert
 Knight
 Dale Anderson
 Ellen & Willie Andersen
 Stacey Anderson
 Susan Anderson
 Pam Ankenev
 Anonymous
 Constance Arness
 Kathy Artus
 Melba Atkinson

Jane Austin
 Linda Austin
 Susan Awad
 Elaine Bailey
 M. Leonard Baker
 Rhea & John Baldino
 Steven Ball
 Edward Banks
 Gary & Susan Banks
 Tom Banton
 Kenneth I. Barron
 Julie L. Basic
 Chris & Keith Batt
 Kimberley Bauman & Paul
 Goossens
 Carol & Hillis Beck
 Matthew & Suzanne Bednar
 Eva Beier
 Jeanna & George Beker
 Russell Bell
 Celia Belton
 Kathi Berrang
 Elizabeth & Jeffrey Best
 Kathryn Bettis
 Tom Bibb
 William T. Bickley
 Elizabeth Birdsall
 Diane Bisgaier
 Susan Bishop
 Kristina Reid Black
 Tory Blackford
 Steph Blanch
 Julie Blommel
 Aaron Bloomfield
 Blue Ridge AV and Lighting,
 LLC
 BMW of Charlottesville/
 Crown Automotive
 Mary Alice Bond
 Bonefish Grill
 Anabel Bowen
 James & Julie Boyer
 Ronnie Bradshaw
 Lewis Bragg & Sharon
 Showalter
 Vicki Branham
 Pamela Brezinski
 Laura Brown
 Amy Brudin
 Donna & Michael Bruggeman
 Jennifer & Mason Brugh

Elaine Bunch
 Nancy P. Burnett
 Bonnie Burns
 Linda Burton
 David & Lisa Bush
 Joyce & Frank Butros
 Jenny Buzan & Steven Cohn
 Curtis & Carolyn Byers
 Frank Byers, Jr. & Jerry
 Northcutt
 William Byers
 C&D Concierge Services
 C&O Restaurant
 Adrienne L. Carlee
 Libby Carpenter
 Linda Carpenter
 Stace Carter
 Janice & Shelton Cartwright
 John & Rosamund Casey
 Sharon & Larry Cavender
 Naomi Chang
 Chaps Ice Cream
 Charlottesville Fire
 Department
 Linda Chauvin
 Clarendon Wealth
 Management
 Stephanie Clayton
 Patti Cobb
 Cody & Jaci
 Mary Ann Coffey & Murphy
 Moss
 Katelyn Coffman
 Bobbye Cohen
 Sandra B. Cohen
 James and Roma Collins
 Mary Collins
 Deborah Collyer
 M. A. Colony
 Lori Connolly
 Kayla Cook
 Rachel Cooke
 Jean Cornwell
 Chrysten Costa
 County Waste
 Lindsay Craig
 Virginia Cramer
 Michael & Karen Crane
 Crazy Horse
 Gwynn Crichton
 Emily Crim

John Crosby
 Elizabeth Crow
 Crutchfield
 Betty & Dale Crutchfield
 Carol Cutler
 William Cypser
 Sandra & Alfonso Damico
 Deborah Dandridge
 Joseph Dane
 Patricia & Donald D'Antuono
 Annie Darken
 Catherine & Domenico
 D'Auria
 Alex Davis
 Annette Dayton
 Dina DeBerry
 Doug & Drene DeGood
 June & Gerrit Degraaf
 Louise Dehne
 Linda DeMong
 Lynne Deucher
 Danielle & Daniel Devereux
 Nancy DiCicco
 Susan DiGiacomo
 Diane Doherty
 Brenda Dolan
 Deb Donnelly
 Lisa Draine
 Kyle Drumheller
 Karen Duby
 Becki Duday
 Rebecca Duff
 Lauren Duncan
 Nellie Durham
 Patricia Durrer
 Skye Durrer
 Tammy Dyer
 Laura Easter
 Shelly Easter
 Marie Elena & Michaux Grant
 Linda Elsey
 Emergency Food Network
 Marta Engdahl
 Rebecca English
 Mimi Ensminger
 Michael Erickson
 Stacy Erickson
 Jean Ethier
 Kate Evans
 Eze Amos Photography
 Lisa Farr

Bonnie Farrar
 Judy Faust
 Leslie Fendeley
 Barbara Ferrier
 Judith L. Fike
 Ron & Nancy Fischer
 Ellen Fisher
 Louan Fisher
 Susanne Fladd
 Brenda Flynn
 Kathy Fontenot
 Erika Ford
 Beth & Charles D. Fox IV
 Maria Fox
 Michael Fox
 Janice Frame
 Sterling & Gerald Frank
 Wendy Frazer & Richard
 Gullick
 Jennifer Freeman
 Charles Frieden
 Karen Gaffney
 Sylvia & Michael Gage
 Charles Gagnebin
 Kim Gallihugh
 Kim Gallmeyer
 Kate & Bruce Galloway
 Maggie & Richard Gangloff
 Bette Garbett
 Maran & Rob Garland
 Jeffrey Garrett
 Stephanie Gartner
 John Gendreau
 Giant Food
 Robert & Mary Gibson
 Margo Gill
 Scott and Tarpley Gillespie
 Girl Scout Troop #68
 Gleaning for the World
 Carrie P. Goforth
 Donna Goings
 Janie & Ron Goldberg
 Robin Goodall & Robert
 Waite, Jr.
 Varun Gopalan
 Janet Gorman
 Jane T. Govan
 Lynn Govoruhk
 Maureen Graham
 Sharon Gregory
 Kirby Griffs & Julie Bowersett

Emma Piczak
Betty Pittman
Stephen Plaskon
Julia Plaza-Ponte
Helen Pleasant
Carrie L. Pledger
Kaye Poff
Bob & Judy Polhemus
Jamie Polisky
Elizabeth & Michael Poole
Av & Janet Posner
Brenda & Mike Powell
Trent Powell
Laurelyn Pratt & Tina
Pederscheck
Print Source
Paige Pullen
Lynne Radin
Nancy Rae
Roger Rainville
Raising Canes Chicken
Fingers
Carol & Kenneth Rasmussen
Linda Rayner
Tara Reardon
Richard and Susan Reed
Christine Reider
Joe Reilly
Laura Reilly
Dina & Terance J. Rephann
John William Reston
Helen R. Reutlinger
Ellen Richardson
Melissa Richardson
Sarah & Norm Riggins
Jennifer Rinehart
Kristen Ritter
Frances Roberson
Kristin & Brandon Roberts
Sara Robinson & Carolyn
George
Rockpile Construction
Company
Antonio Rodriguez
Ruth Rooks
Jeanne Rosemann & June
Yang
Kay S. Ruffner
Amelia Ryan
S. L. Williamson Company,
Inc.

Jean & Douglas Salter
Sarisand Tile, LLC
Annie & Paul Sartori
Ann-Rodes & Clayton
Savage
Michelle Sawwan
Carrie E. Schaffer
Kamilla Schenck
Yvette Schmalz-Riedt
Nancy Schmelter
H. Schmeltzer
Ed Scorza
Christine & Michael Scott
J. Mark & Marianna Scott
Marie Seaward
Krista Seiden
Senior Center, Inc.
The Shade Shop
Vanessa Shami
Elaine Shaw
David Shelly
Emma Shelton
Charles J. Shields
Vali Shoop
Diane Siebels & Donald
Kimpel
Tim Sigmon
M. Simpson
Deborah Sinek
Sid Sitzer
Ashley Skelly
Kathryn Skinner
Kiki Slaughter
Glenna Slosson
Janet Smalley
Mary John Smith
Michelle Smith
Nancy & Richard Smith
Steve Smith
Cynthia Smith-Power
Paula Soukup
Hedy & Amanda R. Southard
Southern Crescent
Jeffrey & Nancy A. Spence
Erin Spencer
Krista Speno
Laura & Stoddard Spetz
Mildred Spicer
Jan Spink
Benjamin Sporcic
Anne & John Staley

Cat Stanley
Ruby Stanley
Alex Starns
Kim Starr
Joy & David Steel
Anne Stevens
Jennifer Stone
Shannon Dee Strassner
David Strite
Suzanne Stroup
Kendon Stubbs
Rachel Stukenborg
Townsend Stumpf
Marian C. Styles
Michael Sullivan & Karin
Wittenborg
Sun Tan City
P. Kevin Sushka & Anna
Hammarskjold
Carol Sweetanos
Rebecca & David Swett
T&N Printing
Linde Tassell
Heather Taylor
Debbie Thacker
Monika Thielen
Greg Thies
Alessandra & Craig Thomas
Susan J. Thomas
E. E. Thompson
Elizabeth Tignor
Torey M. Todd
JJ Towler
Suzanne Trendel
Christy Tromey
Lawrence and Mary Tropea
George & Martha Truxel
Delores E. Van
Margaret vanEkeren
Ernetta & Robert Van Orden
Elisabeth Veasez
Malathi Veeraraghavan &
Shrikant Ramamurthy
Nancy & Kurt Vetter
Ellen & Paul Vieth
Donna & Dick Vinal
Virginia National Bank
Virginia Tent Rentals
Christine M. Vitrikas
George Wade
Derrick Waller

Mary Walter & George Yin
Christy & Brian Wamhoff
Lisa & Richard Warburton
Susan Ward
Sarah & Chris Warring
Nick Waters & Jane Cornelius
Sally Watson
Shayna Watson
Winifred Wegmann
Linda Wehrli
Liz Wellbeloved-Stone
Jodi White
Thomas G. White
Emily Whitmore
Leanna Whitmore
Kim & Chris Whitten
Whole Foods Market
D. Wiant
Amy Wiebir
Jasm Wilkerson
Caroline S. Wilson
Mario Wilson
Susan & Karie Wilson
Arthur Winder
Mary Wingerd
Frank Wintrich
Chelsea Wolf
Sharon Woltz
Barbara & Richard Wood, III
Andrea I. Woods
Sue Woodson
Leah Woody
Christine Worsham
Mary Wright
Stephanie Yard
Amy P. Yates
Teresa Yelton
Seymour R. Young, Jr
Martin Younker
Carol Zancho
Janet Zaso



A close-up photograph of a dog with black, white, and brown patches, running happily in a grassy field. The dog's tongue is out, and its eyes are bright. The background is a soft-focus green field.

THANK YOU FOR
YOUR SUPPORT!



The Charlottesville-Albemarle SPCA
P.O. BOX 7047
Charlottesville, VA 22906